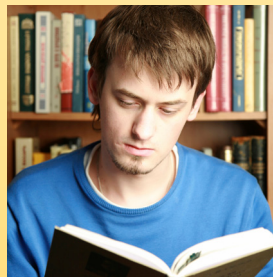


Studies in Education Policy



Report Card on Alberta's High Schools 2018

by Peter Cowley and Angela MacLeod



Report Card on Alberta's High Schools 2018

by Peter Cowley and Angela MacLeod

Contents

Introduction / 3

Key academic indicators of school performance / 5

Other indicators of school performance / 10

Notes / 11

Detailed school reports / 12

How does your school stack up? / 33

Appendix: Calculating the *Overall rating out of 10* / 36

About the Authors / 38

Publishing information / 39

Supporting the Fraser Institute / 40

Purpose, funding, & independence / 40

About the Fraser Institute / 41

Editorial Board / 42

Introduction

The *Report Card on Alberta's High Schools 2018* (hereafter, *Report Card*) collects a variety of relevant, objective indicators of school performance into one, easily accessible public document so that anyone can analyze and compare the performance of individual schools. By doing so, the *Report Card* assists parents when they choose a school for their children and encourages and assists all those seeking to improve their schools.

The Report Card helps parents choose

Where parents can choose among several schools for their children, the *Report Card* provides a valuable tool for making a decision. Because it makes comparisons easy, the *Report Card* alerts parents to those nearby schools that appear to have more effective academic programs. Parents can also determine whether schools of interest are improving over time. By first studying the *Report Card*, parents are better prepared to ask relevant questions when they interview the principal and teachers at the schools under consideration.

Of course, the choice of a school should not be made solely on the basis of any one source of information. Families choosing a school for their students should seek more information by visiting the school and interviewing teachers and school administrators. The web sites of [Alberta Education](#), local school districts, and individual schools can also be sources of useful information. And, a sound academic program should be complemented by effective programs in areas of school activity not measured by the Report Card. Nevertheless, the Report Card provides a

detailed picture of each school that is not easily available elsewhere.

The Report Card aids school improvement

Certainly, the act of publicly rating and ranking schools attracts attention. Schools that perform well or show consistent improvement are applauded. The results of poorly performing schools and those whose performance is deteriorating generate concern. This attention, in itself, provides an incentive for all those connected with a school to redouble their efforts to improve student results. However, the *Report Card* offers more than just incentive: it includes a variety of indicators, each of which reports results for an aspect of school performance that might be improved. School administrators who are dedicated to improvement accept the *Report Card* as another source of evidence that their schools can do a better job.

Some schools do better than others

In order to improve a school, one must believe that improvement is achievable. The *Report Card on Alberta's High Schools*, like all the other editions, provides evidence about what can be accomplished. It demonstrates clearly that even when we take into account factors such as the students' family background, which some believe dictates the degree of academic success that students will have in school, some schools do better than others. This finding confirms research results from other countries.¹ Indeed, it will come as no great surprise to experienced parents and educators that the data consistently suggest that what goes on in the schools makes a difference to

student success and that some schools make more of a difference than others.

Comparisons are at the heart of the improvement process

By comparing a school's latest results with those of earlier years, we can see if the school is improving. By comparing a school's results with those of neighbouring schools, or of schools with similar school and student characteristics, we can identify more successful schools and learn from them. Reference to overall provincial results places an individual school's level of achievement in a broader context.

There is great benefit in identifying schools that are particularly effective. By studying the proven

techniques used in schools where students are successful, less effective schools may find ways to improve. Comparisons are at the heart of improvement and making comparisons among schools is made simpler and more meaningful by the *Report Card's* indicators, ratings, and rankings.

You can contribute to the development of the *Report Card*

The *Report Card* program benefits from the input of interested parties. We welcome your suggestions, comments, and criticisms. Please contact co-author Peter Cowley at peter.cowley@fraserinstitute.org.

Key academic indicators of school performance

The foundation of the *Report Card* is an overall rating of each school's academic performance. Building on data about student results provided by Alberta Education (the provincial ministry of education) we rate each school on a scale from zero to 10. We base our overall rating of each school's academic performance on eight indicators:

- (1) average diploma examination mark;
- (2) percentage of diploma examinations failed;
- (3) difference between the school mark and examination mark in diploma courses;
- (4) difference between male and female students in the average value of their exam marks in English 30-1/2;
- (5) difference between male and female students in the average value of their exam marks in Mathematics 30-1/2;
- (6) diploma courses taken per student;
- (7) diploma completion rate;
- (8) delayed advancement rate.

We have selected this set of indicators because they provide systematic insight into a school's performance. Because they are based on annually generated data, we can assess not only each school's performance in a year but also its improvement or deterioration over time.

Three indicators of effective teaching

1 *Average diploma examination mark*

This indicator (in the tables *Average exam mark*) is the average percentage achieved by a school's students on the uniform final examinations in all of the diploma courses at all sittings during the year. In the calculation of this indicator, each course result is weighted by the relative number of students who completed the course.

Examinations are designed to achieve a distribution of results reflecting the differences in students' mastery of the course work. Differences among students in interests, abilities, motivation, and work-habits will inevitably have some impact upon the final results. There are, however, recognizable differences from school to school within a district in the average results on the diploma examinations. There is also variation within schools in the results obtained in different subject areas. Such differences in outcomes cannot be wholly explained by the individual and family characteristics of the school's students. It seems reasonable, therefore, to include the average examination mark for each school as one indicator of effective teaching.

2 *Percentage of diploma examinations failed*

For each school, this indicator (in the tables *Percentage of exams failed*) provides the rate of failure (as a percentage) in the diploma examinations. It was derived by dividing the sum, for each school, of all diploma examinations written by a school's students at all sittings during the year where a failing grade was awarded, by the total number of such examinations

written by those students. In part, effective teaching can be measured by the ability of the students to pass any uniform examination that is a requirement for successful completion of a course. Schools have the responsibility of preparing their students to pass these final examinations.

There is good reason to have confidence in this indicator as a measure of effective teaching. A student need only successfully complete two diploma courses in order to graduate. Such a student's course of study may not include the prerequisites for all post-secondary educational options but it will be sufficient for graduation from high school. Thus, students enroll in the diploma courses, in large measure, because they want to take them. Further, their success in grade 12 reflects to a certain extent how well students have been prepared in the lower grades. All of the diploma courses have prerequisite courses. Indeed, depending on the school, admission to some of the grade-12 courses may require that the student have received a prescribed minimum grade in the prerequisite lower-level course. Since the decision to take diploma courses is, for the most part, voluntary and requires demonstrated success in previous courses, it seems reasonable to use the percentage of examinations failed in these courses as an additional indicator of the effectiveness of the teaching in high schools.

3 *Difference between school mark and examination mark*

For each school, this indicator (in the tables *School vs exam mark difference*) gives the average amount (for all of the diploma courses) by which the "school" mark—the assessment of each student's learning that is made by the school—exceeds the exam mark in that course.²

Effective teaching includes regular assessment so that students and teachers alike may be aware of a student's progress. For such assessment to be useful, it must reflect the student's understanding of the course accurately. As a systematic policy, inflation of the grades awarded by the school will be counterproductive. Students who believe they are already successful when they are not will be less likely to invest the extra

effort needed to master the course material. In the end, they will be poorer for not having achieved the level of understanding that they could have through additional study.

The effectiveness of school-based assessments can be determined by a comparison to external assessments of the students. For each diploma course, Alberta Education, the authority that designed the course, administers its uniform examination. This examination will test the students' knowledge of the material contained in the course. If the mark assigned by the school is a reasonably accurate reflection of students' understanding, it should be roughly the same as the mark gained on the diploma examination. Thus, if a school has accurately assessed a student as consistently working at a C+ level, the student's examination result will be at a similar level. If, however, a school is consistently granting marks substantially higher or lower than those achieved by its students on the final examinations, then the school is not providing an accurate indicator of the extent to which knowledge of the course material is being acquired.

An indication of consistency in teaching and assessment

The Gender gap indicators

Research³ has shown that, in British Columbia's secondary schools, there are systematic differences between the academic results achieved by boys and those achieved by girls. These differences are particularly apparent where the local school makes the assessments. These findings are supported by data from Alberta Education. However, the same research found that "there appears to be no compelling evidence that girls and boys should, given effective teaching and counselling, experience differential rates of success."⁴ Further, "[t]he differences described by each indicator vary from school to school over a considerable range of values."⁵

The *Gender gap* indicators measure the difference, if any, between the average exam marks in English 30-1 or English 30-2 and Mathematics 30-1

or 30-2—depending upon which courses have the largest enrolment—for boys and girls. The indicator reports the size of the difference and the more successful sex.

Three indicators of practical, well-informed counselling

While they are attending high school, students must make a number of decisions of considerable significance about their education. They will, for instance, annually decide whether to begin or continue learning a second language. In grade 10, they are required to choose between different streams in several core subject areas. In all the senior high-school years, they will face the choice of completing high school or abandoning it in favour of full-time work.

Will these young people make good decisions? It is unrealistic to presume that they can do so without advice. What practical, well-informed counselling can they call upon? While parents, in the main, are willing to help, many lack the information they need to be able to provide good advice. It falls, therefore, to the schools to shoulder some responsibility for advising students and their parents about educational choices.

The final three indicators used in the calculation of the *Overall rating out of 10* assess the counsel given by the schools by measuring the quality of the decisions taken by the students about their education. Of course, wise students will seek guidance not only from the counsellors designated by the schools but also from teachers and administrators, parents, and other relatives. Where students have strong support from family and community, the school's responsibility for counselling may be lighter; where students do not have such strong support, the school's role may be more challenging. These indicators measure the school's success in using the tools at its disposal to help students make good decisions about their education.

There are two very important decisions that senior students must make. First, they must decide whether or not to remain in school, do the work, and graduate with their class. Second, they must decide whether

or not to take a number of academically challenging diploma courses. Effective counselling will encourage students to make appropriate choices.

1 *Delayed advancement rate*

This indicator measures the extent to which schools keep their students in school and progressing in a timely manner toward completion of their diploma program. It uses data that report the educational status of students one year after they have enrolled in a given grade at any school in Alberta. For example, we can determine from these data how many of a school's grade-10 students re-enroll in the following year in grade 11; are enrolled in grade 10 for a second time; or fail to re-enroll. With these raw data, following a technique that we introduced to Canada in the *Report Card on Quebec's Secondary Schools, 2001 Edition*,⁶ we calculate a statistic that will answer the question, "Based on this single year's school results, what is the likelihood that a student entering grade 10 at the school will graduate in the normal three-year period?"

The indicator is calculated as follows. For each school for each of grades 8, 10, 11, and 12, a rate of successful transition is determined by first summing the number of students who either receive a diploma in the current school year or re-enroll in a higher grade in the following year and then dividing that sum by the number of students enrolled in the grade in the current year. Then, for each grade, an unsuccessful transition rate is determined by subtracting the rate of successful transition from 1. The unsuccessful transition rates for grades 10, 11, and 12 are then reduced by the grade-8 unsuccessful transition rate at the school in order to produce a net unsuccessful transition rate for each grade of senior high school. We have adopted the grade-8 unsuccessful transition rate as an estimate of the effect on student transition of such events as emigration or death that lead to the disappearance of students from the school system.

The *Delayed advancement rate* indicator can now be calculated. The complements of the net unsuccessful transition rates ($1 - \text{net unsuccessful transition rate}$) for grades 10 through 12 are determined and their product is calculated. This three-year composite

successful transition rate is then subtracted from 1 to produce the *Delayed advancement rate* indicator that appears in the detailed tables.

Where a school does not enroll grade-8 students, the net dropout rate is calculated using the weighted average grade-8 dropout rate for all the schools in the relevant school district or division. Where a school does not enroll students in any of grade 10, 11, or 12, no *Delayed advancement rate* can be calculated.

2 Diploma completion rate

This indicator, related to the *Delayed advancement rate*, reports the percentage of first-time grade-12 students who received a diploma in the reported school year. It is derived from data provided by Alberta Education. Graduation from high school retains considerable value since it increases options for post-secondary education. Further, graduates from high school who decide to enter the work force immediately will, on average, find more job opportunities than those who have not graduated.

By completing the 11 years of schooling in preparation for the final high-school year, students have already demonstrated a reasonable ability to handle the basic courses offered by the school. Moreover, for the majority of students, the minimum requirements for graduation are not onerous. The chance that students will not graduate solely because they are unable to meet the intellectual demands of the curriculum is, therefore, relatively small.

Nevertheless, the graduation rate varies quite widely from school to school throughout the province. While there are factors not related to education—emigration from the province, sickness, death, and the like—that can affect the data, there is no reason to expect these factors to influence particular schools systematically. Accordingly, we take variations in the graduation rate to be an indicator of the extent to which students are being well coached in their educational choices.

3 Diploma courses taken per student

This indicator (in the tables *Courses taken per student*) measures the average number of diploma courses

completed by those students registered in a school on September 30th of the reported school year who are classified as having been in Grade 10 two years earlier. It is derived by summing each school's diploma course participation rates provided by Alberta Education.

In their senior years, students have freedom to choose from a considerable variety of courses. Their choices will have an impact upon their literacy, numeracy, and analytical skills upon graduation. Their choices also affect the post-secondary options open to them.

Diploma courses offer study at the senior level in a variety of core disciplines: English language arts (or French for francophone students), Mathematics, the sciences, and the humanities. Alberta Education has developed courses in each discipline that reflect the post-secondary ambitions of different groups of students and, far from being courses only for a university-bound elite, these courses teach skills and knowledge that will benefit students, no matter what they plan to do after graduation. Further, it is the marks obtained in these courses that are commonly used by post-secondary institutions—institutes of technology and community colleges as well as universities—to assess the applicant's readiness for further study and for admission to programs with limited enrollment. Thus, for most students a decision to take advantage of these courses is a good one and a school that is successful in encouraging students to take these courses shows that it offers practical, well-informed counselling.

Please note: The method of calculation that Alberta Education uses to determine this participation rate has changed. Values for this indicator for the school year 2015/2016 and subsequent are not comparable with earlier values.

In general, how is the school doing academically? The Overall rating out of 10

While each of the indicators is important, it is almost always the case that any school does bet-

ter on some indicators than on others. So, just as a teacher must make a decision about a student's overall performance, we need an overall indicator of school performance (in the tables *Overall rating out of 10*). Just as teachers combine test scores, portfolio assessment, and class participation to rate a student, we have combined all the indicators to produce an overall school rating. The Overall rating is not an absolute measure. That is, if a school scores a 10 out of 10 that does not mean that it has achieved perfection. It simply means that when all the indicators were taken into account, that school performed better than all the other schools in the *Report Card*. Thus, the overall rating of school performance answers the question, "In general, how is the school doing, academically compared to other schools in the *Report Card*?"

To derive this rating, the results for each of the indicators, for each school year were first standardized. Standardization is a statistical procedure whereby sets of raw data with different characteristics are converted into sets of values with "standard" sta-

tistical properties. Standardized values can readily be combined and compared.

The standardized data were then combined as required to produce eight standardized scores—one for each indicator—for each school, for each year. The eight standardized scores were weighted and combined to produce an overall standardized score. Finally, this score was converted into an overall rating. It is from this *Overall rating out of 10* that the school's provincial rank is determined.

For schools where either of the *Gender gap* indicators could not be calculated, *Gender gap* results were not used in the calculation of the *Overall rating*. In such cases the *Overall rating* was derived using the remaining six indicators. (See Appendix 1 for an explanation of the calculation of the *Overall rating out of 10*.)

Finally, note that the *Overall rating out of 10*, based as it is on standardized scores, is a relative rating. That is, in order for a school to show improvement in its overall rating, it must improve more than the average. If it improves, but at a rate less than the average, it will show a decline in its rating.

Other indicators of school performance

Since the first edition of the *Report Card*, we have added other indicators that, while they are not used to derive the *Overall rating out of 10*, add more information on the school's effectiveness.

The *Trend* indicator

Is the school improving academically? For most schools, the *Report Card* includes several years of results. Unlike a simple snapshot of one year's results, this historical record provides evidence of change (or lack thereof) over time.

In order to detect trends in the performance indicators, we developed the *Trend* indicator. This indicator uses statistical analysis to identify those dimensions of school performance in which there has been real change rather than a fluctuation in results caused by random occurrences. To calculate the trends, the standardized scores rather than raw data are used. Standardizing makes historical data more comparable and the trend measurement more reliable. Because calculation of trends is uncertain when only a small number of data points is available, a trend is indicated only in those circumstances where five years of data are available and where a trend is determined to be statistically significant. For this indicator we have defined the term “sta-

tistically significant” to mean that, nine times out of 10, the results displayed represent a real change, that is, it is unlikely that the differences in the indicator values are simply random variation from year to year.

Indicators of student characteristics and programs

This edition includes three indicators that provide more information about the students that the school serves. The alternative French program indicator (in the tables *Alt. French (%)*) reports the proportion of the school's students who are registered in French immersion or other alternative French languages programs. This indicator does not include core French or Francophone programs.

The English as a second language indicator (in the tables *ESL (%)*) reports the proportion of the school's students who are registered in ESL programs. Finally, the special needs indicator (in the tables *Special needs (%)*) reports the proportion of the school's students who have identified special needs. This indicator excludes gifted students.

These indicators provide useful information that readers can use to compare the results at schools serving students with similar characteristics.

Notes

- 1 See, for instance, Michael Rutter et al., *Fifteen Thousand Hours: Secondary Schools and Their Effects on Children* (Cambridge, MA: Harvard University Press, 1979) and Peter Mortimore et al., *School Matters: The Junior Years* (Wells, Somerset: Open Books, 1988).
- 2 As of September 1, 2015, for calculating the final mark, the school-awarded mark counts for 70% and the diploma examination mark counts for 30%.
- 3 Peter Cowley and Stephen Easton, *Boys, Girls, and Grades: Academic Gender Balance in British Columbia's Secondary Schools*. Public Policy Sources 22 (Vancouver, BC: The Fraser Institute, 1999).
- 4 Cowley and Easton, *Boys, Girls, and Grades*: page 7.
- 5 Cowley and Easton, *Boys, Girls, and Grades*: page 17.
- 6 A detailed discussion of the Transition Rate indicator will be found on page 8 of Richard Marceau and Peter Cowley, *Bulletin des écoles secondaires du Québec: Édition 2001 / Report Card on Quebec's Secondary Schools: 2001 Edition* (Montréal, QC and Vancouver, BC: Institut économique de Montréal and The Fraser Institute, 2001), where it is called *Promotion rate* or *Taux de promotion*.

Detailed school reports

How to read the tables

Use the sample table and the explanation of each line below to help you interpret the detailed results for each school. Families choosing a school for their students should seek to confirm the *Report Card's* findings by visiting the school and interviewing teachers and school administrators. More information regarding schools may be found on Alberta Education's [web site](#) and on the web sites of Alberta's local school authorities and of individual schools. And, of course, a sound academic program

should be complemented by effective programs in areas of school activity not measured by the *Report Card*.

IMPORTANT: In order to get the most from the *Report Card*, readers should consult the complete table of results for each school of interest. By considering several years of results—rather than just a school's rank in the most recent year—readers can get a better idea of how the school is likely to perform in the future.

A – GEOGRAPHICAL AREA							
School [Affiliation]	Location	Gr 12 Enrollment: 30 – B					
C –	ESL (%): n/a	Special needs (%): 21.1	Alt. French (%): 0.0				
D –	Actual rating vs predicted based on parents' avg. inc. of \$ n/a: n/a		2016-17 Rank: 144/262		Last 5 Years Rank: 151/225		
	Academic Performance	2013	2014	2015	2016	2017	Trend
E –	Average exam mark	63.8	58.6	66.0	57.7	63.4	—
F –	Percentage of exams failed	11.5	27.7	17.0	31.8	15.1	—
G –	School vs exam mark difference	7.5	8.3	6.4	5.5	5.3	▲
H –	Language Arts gender gap	n/a	n/a	n/a	n/a	n/a	n/a
I –	Math gender gap	n/a	n/a	n/a	n/a	n/a	n/a
J –	Courses taken per student	n/a	n/a	n/a	2.8	3.1	n/a
K –	Diploma completion rate	89.2	91.7	82.1	69.2	77.3	▼
L –	Delayed advancement rate	21.4	29.4	28.0	34.4	41.6	▼
M –	Overall rating out of 10	6.5	5.2	6.4	4.4	5.9	—

A—Geographical area

Each of the schools in the *Report Card* has been assigned to a geographical area based on the city or town in which the school is located. The Edmonton, Calgary, and Red Deer areas include only schools located in those cities; other areas may include schools in several cities or towns. To find the results of a school, find the city or town where it is located in the *List of cities and geographical areas* below and note the geographical area to which it has been assigned. Geographical areas appear in the *Detailed Tables* in alphabetical order

and the page number upon which the results for each area begin may be found in the *Index of geographical areas* below. Within each geographical area, the schools are listed in alphabetical order.

B—Gr 12 Enrollment

The number of regular day students enrolled in grade 12 in the fall of 2016. Indicator results for small schools tend to be more variable than do those for larger schools and caution should be used in interpreting the results for smaller schools.

C—ESL (%); Special needs (%); Alt. French (%)

These statistics report the percentage of students enrolled in English-as-a-Second-Language programs; the percentage of students with special needs; and the percentage of students enrolled in French immersion or other alternative programs in French. This percentage does not include those enrolled in Francophone programs or in regular French courses.

When you want to compare academic results, these statistics can be used to find other schools where the student body has similar characteristics.

D (left)—Actual rating vs predicted based on average parental employment income

This statistic is not available in this edition.

D (right)—Overall academic ranking

The school's overall academic rank in the province for the school year 2016/2017 and for the most recent five years. The rankings show how the school has done academically compared to the other schools in the *Report Card*. A high ranking over five years indicates consistently strong results at the school.

E—Average exam mark

The average mark (as a percentage) achieved by the students at the school on all of the diploma examinations administered during the school year. Note that all the indicators of academic performance (except the *Courses taken per student* and the *Overall rating out of 10*) are expressed as percentage points.

F—Percentage of exams failed

The percentage of all the diploma examinations written by students at the school that were judged to be below the provincial standard.

G—School vs exam mark

The difference (in percentage points) between the marks received from the school for diploma courses and the corresponding examination marks. Where the exam marks are higher, the result is set to zero. Large differences usually indicate grade inflation by the school.

H—English 30 gender gap**I—Math 30 gender gap**

These statistics report the difference between male and female students in their average exam marks in English 30-1 or English 30-2 and in Mathematics 30-1 or Mathematics 30-2. In both subject areas, the gender gaps are calculated using the most frequently written exam.

J—Courses taken per student

This statistic reports the average number of diploma courses completed by those students registered in the school in the fall of the reported school year who are classified as having been in Grade 10 two years earlier.

K—Diploma completion rate

The percentage of students, enrolled in grade 12 for the first time, who received a diploma in the same school year. Higher completion rates mean that the school is doing a good job of keeping students on track and focused on their work during their final year.

L—Delayed advancement rate

The percentage of the school's grade-10 students who are not likely to complete grade 12 within three years. Low *Delayed advancement rates* indicate that the school's students are likely to complete their high school program in the normal time.

M—Overall rating out of 10

The *Overall rating out of 10* takes into account the school's performance on the eight academic performance indicators (*E through L above*) to answer the question, "In general, how is the school doing academically compared to other schools in the *Report Card*?"

N—Trend

In the Trend column, an upward-pointing arrow at the end of an indicator row means that the school is probably improving on that indicator; a downward-pointing arrow means that the school is probably getting worse. The researchers had to be at least 90% sure that

the changes were not just random before indicating a trend. A dash (—) indicates that there is no significant change; “n/a” indicates that there were insufficient data available with which to calculate a trend. Note that for *Percentage of exams failed*, *School vs exam mark*, the two *Gender gap* indicators, and the *Delayed advancement rate*, a statistically significant downward trend in the data will lead to an upward-pointing arrow in the trend column. For example, a decreasing percentage of examinations failed indicates improvement and so an upward-pointing arrow is displayed.

Other notes

Note 1

Not all of the province's high schools are included in the tables or the ranking. Of all the schools in the province at which any diploma examination results were generated, 262 are included in this *Report Card*. Excluded are schools at which fewer than 10 students were enrolled in grade 12 and schools that did not generate a sufficiently large set of student data to enable the calculation of an *Overall rating out of 10*. Also excluded from the ratings and rankings are on-line learning centres, home-schooling centres, certain alternative schools, and adult education schools.

The exclusion of a school from the *Report Card* should not be considered to be a judgement of the school's effectiveness.

Note 2

Due to continuing improvements in methodology some historical values for indicators and overall ratings are different than those previously reported.

Note 3

In accordance with its regulations regarding the privacy of personal information, where school results involved less than six students, Alberta Education provided no data.

Note 4

Where there were insufficient data available with which to calculate an indicator or where a school was not in operation during a specific year, “n/a” appears in the tables.

Note 5

You can compare a school's results with the all-schools average results shown below.

Average values for all schools		Average Gr 12 Enrollment: 155				
ESL (%): 10.3	Special Needs (%): 12.6	Alt. French (%): 2.5				
Average Parents' Income: \$ n/a						
Academic Performance	2013	2014	2015	2016	2017	Trend
Average exam mark	64.5	64.4	64.6	64.4	64.6	—
Percentage of exams failed	17.7	17.6	17.6	17.9	17.5	—
School vs exam mark difference	8.0	8.5	8.4	8.9	9.0	▼
Language Arts gender gap *	n/a	n/a	n/a	2.8	2.7	n/a
Math gender gap *	n/a	n/a	n/a	4.9	5.2	n/a
Courses taken per student	n/a	n/a	n/a	3.5	3.5	n/a
Diploma completion rate	82.6	82.3	82.8	84.2	83.9	▲
Delayed advancement rate	20.5	23.0	20.5	21.3	21.8	—
Overall rating out of 10	6.0	6.0	6.0	6.0	6.0	n/a

* These results reflect the average size of the gender gaps. The English gender gap favoured females at 72.8% of schools, males at 26.1% of schools, and were even at 1.1% of schools. The Math gender gap favoured females at 56.5% of schools, males at 42.9% of schools, and were even at 0.6% of schools.

Note 6

If you have questions about the *Report Card*, contact Peter Cowley, Director, School Performance Studies at peter.cowley@fraserinstitute.org.

List of cities and school districts

School city	Geographical area	School city	Geographical area
Acme	Acme Area	Drumheller	Drumheller/Three Hills Area
Airdrie	Airdrie Area	Duchess	Brooks Area
Ardrossan	Vegreville/Fort Saskatchewan Area	Dunmore	Taber/Medicine Hat Area
Ashmont	Athabasca/Smoky Lake Area	Edmonton	Edmonton
Athabasca	Athabasca/Smoky Lake Area	Edson	Edson/Whitecourt Area
Banff	Banff Area	Elk Point	St. Paul/Bonnyville Area
Barrhead	Barrhead/Westlock Area	Fairview	Peace River Area
Bassano	Brooks Area	Falun	Wetaskiwin/Drayton Valley Area
Bawlf	Camrose Area	Forestburg	Stettler Area
Beaumont	Leduc Area	Fort Macleod	Fort MacLeod Area
Beaverlodge	Grande Prairie Area	Fort McMurray	Fort McMurray Area
Black Diamond	Okotoks Area	Fort Saskatchewan	Vegreville/Fort Saskatchewan Area
Bonnyville	St. Paul/Bonnyville Area	Glendon	St. Paul/Bonnyville Area
Bow Island	Taber/Medicine Hat Area	Grande Cache	Jasper/Hinton Area
Bowden	Olds/Didsbury Area	Grande Prairie	Grande Prairie Area
Boyle	Athabasca/Smoky Lake Area	Grimshaw	Peace River Area
Breton	Wetaskiwin/Drayton Valley Area	Hanna	Drumheller/Three Hills Area
Brooks	Brooks Area	High Level	High Level/Fort Vermilion Area
Buck Lake	Wetaskiwin/Drayton Valley Area	High Prairie	Grande Prairie Area
Calgary	Calgary	High River	High River Area
Calmar	Leduc Area	Hinton	Jasper/Hinton Area
Camrose	Camrose Area	Innisfail	Olds/Didsbury Area
Canmore	Banff Area	Jasper	Jasper/Hinton Area
Cardston	Lethbridge Area	Kitscoty	Wainwright/Vermilion Area
Caroline	Rocky Mountain House Area	La Crete	High Level/Fort Vermilion Area
Carstairs	Acme Area	Lac La Biche	Athabasca/Smoky Lake Area
Champion	Picture Butte Area	Lacombe	Lacombe/Ponoka Area
Chestermere	Strathmore Area	Lamont	Vegreville/Fort Saskatchewan Area
Claresholm	Picture Butte Area	Leduc	Leduc Area
Coaldale	Lethbridge Area	Lethbridge	Lethbridge Area
Coalhurst	Lethbridge Area	Magrath	Lethbridge Area
Cochrane	Cochrane/Bragg Creek Area	Mallaig	St. Paul/Bonnyville Area
Cold Lake	St. Paul/Bonnyville Area	Manning	High Level/Fort Vermilion Area
Coleman	Picture Butte Area	Mannville	Wainwright/Vermilion Area
Condor	Rocky Mountain House Area	Mayerthorpe	Edson/Whitecourt Area
Coronation	Stettler Area	Medicine Hat	Taber/Medicine Hat Area
Crossfield	Airdrie Area	Morrin	Drumheller/Three Hills Area
Delburne	Stettler Area	Namoo	Barrhead/Westlock Area
Devon	Leduc Area	Nanton	High River Area
Didsbury	Olds/Didsbury Area	New Sarepta	Sherwood Park Area
Donnelly	Peace River Area	Okotoks	Okotoks Area
Drayton Valley	Wetaskiwin/Drayton Valley Area	Olds	Olds/Didsbury Area

List of cities and school districts

School city	Geographical area
Onoway	St. Albert/Stony Plain Area
Oyen	Drumheller/Three Hills Area
Peace River	Peace River Area
Picture Butte	Picture Butte Area
Pincher Creek	Fort MacLeod Area
Plamondon	Athabasca/Smoky Lake Area
Ponoka	Lacombe/Ponoka Area
Provost	Wainwright/Vermilion Area
Raymond	Lethbridge Area
Red Deer	Red Deer
Redwater	Vegreville/Fort Saskatchewan Area
Rimbey	Lacombe/Ponoka Area
Rocky Mountain House	Rocky Mountain House Area
Rosemary	Brooks Area
Ryley	Camrose Area
Sedgewick	Wainwright/Vermilion Area
Sexsmith	Grande Prairie Area
Sherwood Park	Sherwood Park Area
Slave Lake	Athabasca/Smoky Lake Area
Smoky Lake	Athabasca/Smoky Lake Area
Spirit River	Grande Prairie Area
Spruce Grove	St. Albert/Stony Plain Area
Spruce View	Olds/Didsbury Area

School city	Geographical area
St. Albert	St. Albert/Stony Plain Area
St. Paul	St. Paul/Bonnyville Area
Stettler	Stettler Area
Stony Plain	St. Albert/Stony Plain Area
Strathmore	Strathmore Area
Sundre	Olds/Didsbury Area
Sylvan Lake	Rocky Mountain House Area
Taber	Taber/Medicine Hat Area
Thorhild	Athabasca/Smoky Lake Area
Three Hills	Drumheller/Three Hills Area
Tofield	Sherwood Park Area
Trochu	Drumheller/Three Hills Area
Valleyview	Grande Prairie Area
Vauxhall	Taber/Medicine Hat Area
Vegreville	Vegreville/Fort Saskatchewan Area
Vermilion	Wainwright/Vermilion Area
Viking	Wainwright/Vermilion Area
Vulcan	High River Area
Wainwright	Wainwright/Vermilion Area
Westlock	Barrhead/Westlock Area
Wetaskiwin	Wetaskiwin/Drayton Valley Area
Whitecourt	Edson/Whitecourt Area

Index of geographical areas

Geographical area	Page
Acme Area	18
Airdrie Area	18
Athabasca/Smoky Lake Area	18
Banff Area	18
Barrhead/Westlock Area	19
Brooks Area	19
Calgary	19
Camrose Area	22
Cochrane/Bragg Creek Area	22
Drumheller/Three Hills Area	22
Edmonton	22
Edson/Whitecourt Area	24
Fort Macleod Area	24
Fort McMurray Area	25
Grande Prairie Area	25
High Level/Fort Vermilion Area	25
High River Area	25
Jasper/Hinton Area	26

Geographical area	Page
Lacombe/Ponoka Area	26
Leduc Area	26
Lethbridge Area	26
Okotoks Area	27
Olds/Didsbury Area	27
Peace River Area	28
Picture Butte Area	28
Red Deer	28
Rocky Mountain House Area	29
Sherwood Park Area	29
St. Albert/Stony Plain Area	29
St. Paul/Bonnyville Area	30
Stettler Area	30
Strathmore Area	30
Taber/Medicine Hat Area	30
Vegreville/Fort Saskatchewan Area	31
Wainwright/Vermilion Area	31
Wetaskiwin/Drayton Valley Area	32

ACME AREA

Acme [Public] Acme		Gr 12 Enrollment: 32				
ESL (%)	4.6	Special needs (%)	9.7	Alt. French (%)	0.0	
Actual rating vs predicted based on parents' avg. inc. of \$ n/a: n/a						
		Rank:	161/262	2016-17	Last 5 Years	118/225
Academic Performance	2013	2014	2015	2016	2017	Trend
Average exam mark	62.3	65.7	62.5	61.0	62.9	—
Percentage of exams failed	17.9	18.0	18.3	22.2	18.7	—
School vs exam mark difference	6.9	5.6	6.0	6.8	7.2	—
Language Arts gender gap	n/a	n/a	n/a	n/a	n/a	n/a
Math gender gap	n/a	n/a	n/a	n/a	n/a	n/a
Courses taken per student	n/a	n/a	n/a	3.5	3.3	n/a
Diploma completion rate	87.1	96.6	91.4	68.0	71.0	—
Delayed advancement rate	9.1	7.1	17.4	28.9	25.6	▼
Overall rating out of 10	6.0	7.3	6.3	5.6	5.6	—

Hugh Sutherland [Public] Carstairs		Gr 12 Enrollment: 35				
ESL (%)	2.8	Special needs (%)	8.9	Alt. French (%)	0.0	
Actual rating vs predicted based on parents' avg. inc. of \$ n/a: n/a						
		Rank:	36/262	2016-17	Last 5 Years	49/225
Academic Performance	2013	2014	2015	2016	2017	Trend
Average exam mark	69.5	65.9	66.2	65.9	68.4	—
Percentage of exams failed	12.7	14.1	11.3	9.4	9.0	—
School vs exam mark difference	6.5	7.8	9.0	11.1	8.3	—
Language Arts gender gap	n/a	n/a	n/a	F.0.7	n/a	n/a
Math gender gap	n/a	n/a	n/a	M.7.3	n/a	n/a
Courses taken per student	n/a	n/a	n/a	3.6	3.7	n/a
Diploma completion rate	90.7	96.2	94.1	97.2	100.0	▲
Delayed advancement rate	19.0	9.3	10.3	7.5	1.6	▲
Overall rating out of 10	7.3	6.9	6.9	7.1	7.6	—

AIRDRIE AREA

Airdrie Koinonia Christian [Private] Airdrie		Gr 12 Enrollment: 13				
ESL (%)	10.6	Special needs (%)	10.1	Alt. French (%)	0.0	
Actual rating vs predicted based on parents' avg. inc. of \$ n/a: n/a						
		Rank:	124/262	2016-17	Last 5 Years	105/225
Academic Performance	2013	2014	2015	2016	2017	Trend
Average exam mark	63.1	65.4	69.5	63.8	62.5	—
Percentage of exams failed	18.6	19.6	10.2	22.9	27.4	—
School vs exam mark difference	12.6	14.9	10.8	12.6	12.5	—
Language Arts gender gap	n/a	n/a	n/a	n/a	n/a	n/a
Math gender gap	n/a	n/a	n/a	n/a	n/a	n/a
Courses taken per student	n/a	n/a	n/a	4.2	4.5	n/a
Diploma completion rate	100.0	91.7	100.0	100.0	100.0	—
Delayed advancement rate	8.5	17.1	0.0	n/a	n/a	n/a
Overall rating out of 10	5.9	5.7	7.6	6.0	6.2	—

Bert Church [Public] Airdrie		Gr 12 Enrollment: 188				
ESL (%)	5.4	Special needs (%)	25.6	Alt. French (%)	0.0	
Actual rating vs predicted based on parents' avg. inc. of \$ n/a: n/a						
		Rank:	178/262	2016-17	Last 5 Years	131/225
Academic Performance	2013	2014	2015	2016	2017	Trend
Average exam mark	67.9	64.9	62.4	60.9	62.2	▼
Percentage of exams failed	11.6	15.3	16.5	20.6	20.4	▼
School vs exam mark difference	3.3	4.8	5.7	9.0	8.9	▼
Language Arts gender gap	n/a	n/a	n/a	F.7.2	F.2.3	n/a
Math gender gap	n/a	n/a	n/a	F.6.7	M.3.1	n/a
Courses taken per student	n/a	n/a	n/a	2.8	3.0	n/a
Diploma completion rate	84.5	79.7	79.1	81.6	83.6	—
Delayed advancement rate	18.5	22.1	23.5	24.2	22.6	—
Overall rating out of 10	7.3	6.6	6.0	4.8	5.4	▼

George McDougall [Public] Airdrie		Gr 12 Enrollment: 151				
ESL (%)	4.6	Special needs (%)	17.0	Alt. French (%)	26.6	
Actual rating vs predicted based on parents' avg. inc. of \$ n/a: n/a						
		Rank:	161/262	2016-17	Last 5 Years	67/225
Academic Performance	2013	2014	2015	2016	2017	Trend
Average exam mark	66.1	66.1	66.0	64.7	61.6	▼
Percentage of exams failed	12.2	12.1	12.3	14.5	19.7	▼
School vs exam mark difference	3.9	4.0	3.9	6.6	9.9	▼
Language Arts gender gap	n/a	n/a	n/a	F.1.5	M.4.7	n/a
Math gender gap	n/a	n/a	n/a	F.1.0	M.3.3	n/a
Courses taken per student	n/a	n/a	n/a	3.1	3.6	n/a
Diploma completion rate	88.8	90.9	85.4	88.4	84.5	—
Delayed advancement rate	12.8	12.0	13.0	12.0	16.4	—
Overall rating out of 10	7.3	7.4	7.2	6.6	5.6	▼

St. Martin De Porres [Separate] Airdrie		Gr 12 Enrollment: 89				
ESL (%)	13.1	Special needs (%)	17.2	Alt. French (%)	n/a	
Actual rating vs predicted based on parents' avg. inc. of \$ n/a: n/a						
		Rank:	99/262	2016-17	Last 5 Years	55/225
Academic Performance	2013	2014	2015	2016	2017	Trend
Average exam mark	69.4	66.2	65.0	66.8	65.2	—
Percentage of exams failed	3.9	12.2	15.0	8.9	14.3	—
School vs exam mark difference	3.7	6.3	6.8	6.1	9.7	—
Language Arts gender gap	n/a	n/a	n/a	F.1.5	M.0.3	n/a
Math gender gap	n/a	n/a	n/a	F.8.1	M.5.7	n/a
Courses taken per student	n/a	n/a	n/a	3.3	3.9	n/a
Diploma completion rate	76.8	89.1	92.0	93.4	95.4	▲
Delayed advancement rate	25.8	16.9	13.2	8.1	43.4	—
Overall rating out of 10	7.4	7.1	6.7	7.2	6.5	—

W.G. Murdoch [Public] Crossfield		Gr 12 Enrollment: 36				
ESL (%)	n/a	Special needs (%)	21.8	Alt. French (%)	0.0	
Actual rating vs predicted based on parents' avg. inc. of \$ n/a: n/a						
		Rank:	99/262	2016-17	Last 5 Years	55/225
Academic Performance	2013	2014	2015	2016	2017	Trend
Average exam mark	65.8	67.6	64.8	67.7	66.7	—
Percentage of exams failed	8.1	9.7	13.2	7.8	14.0	—
School vs exam mark difference	4.4	7.1	8.6	6.3	8.3	—
Language Arts gender gap	n/a	n/a	n/a	n/a	M.10.4	n/a
Math gender gap	n/a	n/a	n/a	n/a	M.6.5	n/a
Courses taken per student	n/a	n/a	n/a	3.0	3.1	n/a
Diploma completion rate	87.5	93.9	90.9	80.0	94.4	—
Delayed advancement rate	25.2	4.7	8.7	30.8	4.4	—
Overall rating out of 10	7.1	7.6	6.9	6.8	6.5	—

W.H. Croxford [Public] Airdrie		Gr 12 Enrollment: 123				
ESL (%)	4.7	Special needs (%)	19.5	Alt. French (%)	n/a	
Actual rating vs predicted based on parents' avg. inc. of \$ n/a: n/a						
		Rank:	187/262	2016-17	Last 5 Years	n/a
Academic Performance	2013	2014	2015	2016	2017	Trend
Average exam mark	n/a	n/a	n/a	n/a	61.6	n/a
Percentage of exams failed	n/a	n/a	n/a	n/a	21.0	n/a
School vs exam mark difference	n/a	n/a	n/a	n/a	8.4	n/a
Language Arts gender gap	n/a	n/a	n/a	n/a	F.1.3	n/a
Math gender gap	n/a	n/a	n/a	n/a	F.7.0	n/a
Courses taken per student	n/a	n/a	n/a	n/a	3.2	n/a
Diploma completion rate	n/a	n/a	n/a	n/a	76.9	n/a
Delayed advancement rate	n/a	n/a	n/a	n/a	25.4	n/a
Overall rating out of 10	n/a	n/a	n/a	n/a	5.3	n/a

ATHABASCA/SMOKY LAKE AREA

Ashmont [Public] Ashmont		Gr 12 Enrollment: 46				
ESL (%)	0.0	Special needs (%)	22.3	Alt. French (%)	0.0	
Actual rating vs predicted based on parents' avg. inc. of \$ n/a: n/a						
		Rank:	259/262	2016-17	Last 5 Years	224/225
Academic Performance	2013	2014	2015	2016	2017	Trend
Average exam mark	48.6	52.3	49.8	52.2	49.1	—
Percentage of exams failed	56.5	39.0	47.7	42.9	54.8	—
School vs exam mark difference	22.6	14.7	16.8	10.9	14.8	—
Language Arts gender gap	n/a	n/a	n/a	n/a	n/a	n/a
Math gender gap	n/a	n/a	n/a	n/a	n/a	n/a
Courses taken per student	n/a	n/a	n/a	1.8	2.0	n/a
Diploma completion rate	77.3	69.7	74.2	56.3	67.4	—
Delayed advancement rate	33.8	49.7	50.4	56.8	65.0	▼
Overall rating out of 10	0.0	1.2	0.9	0.6	0.0	—

Boyle [Public] Boyle		Gr 12 Enrollment: 26				
ESL (%)	2.7	Special needs (%)	18.1	Alt. French (%)	0.0	
Actual rating vs predicted based on parents' avg. inc. of \$ n/a: n/a						
		Rank:	240/262	2016-17	Last 5 Years	215/225
Academic Performance	2013	2014	2015	2016	2017	Trend
Average exam mark	57.7	53.3	59.9	60.9	55.6	—
Percentage of exams failed	24.2	39.7	28.0	27.8	31.1	—
School vs exam mark difference	12.7	13.3	7.4	11.1	16.7	—
Language Arts gender gap	n/a	n/a	n/a	n/a	n/a	n/a
Math gender gap	n/a	n/a	n/a	n/a	n/a	n/a
Courses taken per student	n/a	n/a	n/a	2.8	3.1	n/a
Diploma completion rate	92.0	65.2	71.4	81.8	95.8	—
Delayed advancement rate	17.3	39.5	34.2	n/a	n/a	n/a
Overall rating out of 10	4.7	2.0	4.1	4.3	3.7	—

Edwin Parr [Public] Athabasca		Gr 12 Enrollment: 114				
ESL (%)	5.4	Special needs (%)	18.7	Alt. French (%)	7.2	
Actual rating vs predicted based on parents' avg. inc. of \$ n/a: n/a						
		Rank:	204/262	2016-17	Last 5 Years	169/225
Academic Performance	2013	2014	2015	2016	2017	Trend
Average exam mark	66.4	62.4	61.7	58.9	61.7	—
Percentage of exams failed	14.4	21.9	23.1	28.9	24.5	▼
School vs exam mark difference	7.1	8.7	8.1	10.7	8.9	—
Language Arts gender gap	n/a	n/a	n/a	M.0.8	F.4.4	n/a
Math gender gap	n/a	n/a	n/a	M.5.0	F.1.4	n/a
Courses taken per student	n/a	n/a	n/a	3.0	3.0	n/a
Diploma completion rate	81.0	80.9	76.7	86.5	76.9	—
Delayed advancement rate	23.2	23.3	24.0	21.6	23.3	—
Overall rating out of 10	6.3	5.5	5.2	4.7	5.0	▼

H. A. Kostash [Public] Smoky Lake		Gr 12 Enrollment: 31				
ESL (%)	0.0	Special needs (%)	15.3	Alt. French (%)	0.0	
Actual rating vs predicted based on parents' avg. inc. of \$ n/a: n/a						
		Rank:	238/262	2016-17	Last 5 Years	n/a
Academic Performance	2013	2014	2015	2016	2017	Trend
Average exam mark	59.1	63.1	57.1	n/a	57.3	n/a
Percentage of exams failed	30.6	20.2	27.3	n/a	25.9	n/a
School vs exam mark difference	11.7	13.2	11.5	n/a	6.8	n/a
Language Arts gender gap	n/a	n/a	n/a	n/a	n/a	n/a
Math gender gap	n/a	n/a	n/a	n/a	n/a	n/a
Courses taken per student	n/a	n/a	n/a	n/a	2.8	n/a
Diploma completion rate	87.5	91.7	96.6	n/a	56.7	n/a
Delayed advancement rate	17.8	8.6	14.3	n/a	52.3	n/a
Overall rating out of 10	4.7	5.8	5.1	n/a	4.0	n/a

J.A. Williams [Public] Lac La Biche		Gr 12 Enrollment: 127				
ESL (%)	6.3	Special needs (%)	18.0	Alt. French (%)	0.0	
Actual rating vs predicted based on parents' avg. inc. of \$ n/a: n/a						
		Rank:	229/262	2016-17	Last 5 Years	206/225
Academic Performance	2013	2014	2015	2016	2017	Trend
Average exam mark	62.6	62.7				

Our Lady of the Snows [Separate] Canmore		Gr 12 Enrollment: 23				
ESL (%)	21.1	Special needs (%)	8.9	Alt. French (%)		0.0
Actual rating vs predicted based on parents' avg. inc. of \$ n/a	n/a	Rank:	14/262	2016-17 Last 5 Years		n/a
Academic Performance	2013	2014	2015	2016	2017	Trend
Average exam mark	78.7	71.3	75.6	n/a	76.9	n/a
Percentage of exams failed	5.1	4.3	7.4	n/a	3.4	n/a
School vs exam mark difference	3.8	10.2	4.5	n/a	7.7	n/a
Language Arts gender gap	n/a	n/a	n/a	n/a	n/a	n/a
Math gender gap	n/a	n/a	n/a	n/a	n/a	n/a
Courses taken per student	n/a	n/a	n/a	n/a	3.9	n/a
Diploma completion rate	64.7	83.3	76.9	n/a	87.0	n/a
Delayed advancement rate	40.7	14.6	20.2	n/a	11.8	n/a
Overall rating out of 10	7.7	7.4	8.0	n/a	8.4	n/a

BARRHEAD/WESTLOCK AREA

Barrhead [Public] Barrhead		Gr 12 Enrollment: 134				
ESL (%)	2.2	Special needs (%)	17.1	Alt. French (%)		0.0
Actual rating vs predicted based on parents' avg. inc. of \$ n/a	n/a	Rank:	150/262	2016-17 Last 5 Years		131/225
Academic Performance	2013	2014	2015	2016	2017	Trend
Average exam mark	65.5	64.1	62.7	64.0	64.0	—
Percentage of exams failed	13.8	15.9	16.6	15.9	15.9	—
School vs exam mark difference	9.1	10.1	10.8	11.4	11.3	▼
Language Arts gender gap	n/a	n/a	n/a	M 1.1	F 6.3	n/a
Math gender gap	n/a	n/a	n/a	M 3.8	F 6.5	n/a
Courses taken per student	n/a	n/a	n/a	3.3	3.3	n/a
Diploma completion rate	84.3	86.9	90.4	89.5	90.8	▲
Delayed advancement rate	19.9	25.1	17.3	17.8	16.4	▲
Overall rating out of 10	6.3	5.9	5.9	6.1	5.8	—

Richard F Staples [Public] Westlock		Gr 12 Enrollment: 150				
ESL (%)	1.1	Special needs (%)	17.7	Alt. French (%)		7.1
Actual rating vs predicted based on parents' avg. inc. of \$ n/a	n/a	Rank:	156/262	2016-17 Last 5 Years		125/225
Academic Performance	2013	2014	2015	2016	2017	Trend
Average exam mark	64.5	65.9	65.6	63.1	62.0	—
Percentage of exams failed	15.4	13.0	14.5	16.7	21.3	—
School vs exam mark difference	6.7	7.3	6.0	7.5	9.1	—
Language Arts gender gap	n/a	n/a	n/a	E M 0.7	n/a	n/a
Math gender gap	n/a	n/a	n/a	F 4.8	M 2.6	n/a
Courses taken per student	n/a	n/a	n/a	3.2	3.4	n/a
Diploma completion rate	77.8	80.2	77.0	81.7	85.0	—
Delayed advancement rate	30.5	27.2	26.7	25.0	24.1	▲
Overall rating out of 10	5.9	6.5	6.3	5.9	5.7	—

St. Mary [Separate] Westlock		Gr 12 Enrollment: 23				
ESL (%)	8.2	Special needs (%)	8.9	Alt. French (%)		0.0
Actual rating vs predicted based on parents' avg. inc. of \$ n/a	n/a	Rank:	150/262	2016-17 Last 5 Years		n/a
Academic Performance	2013	2014	2015	2016	2017	Trend
Average exam mark	66.7	n/a	62.4	n/a	50.4	n/a
Percentage of exams failed	11.5	n/a	17.5	n/a	42.2	n/a
School vs exam mark difference	3.5	n/a	15.4	n/a	8.2	n/a
Language Arts gender gap	n/a	n/a	n/a	n/a	n/a	n/a
Math gender gap	n/a	n/a	n/a	n/a	n/a	n/a
Courses taken per student	n/a	n/a	n/a	n/a	3.2	n/a
Diploma completion rate	66.7	n/a	78.6	n/a	50.0	n/a
Delayed advancement rate	45.7	n/a	21.5	n/a	60.1	n/a
Overall rating out of 10	6.0	n/a	4.8	n/a	2.3	n/a

Sturgeon [Public] Namao		Gr 12 Enrollment: 236				
ESL (%)	n/a	Special needs (%)	15.5	Alt. French (%)		0.0
Actual rating vs predicted based on parents' avg. inc. of \$ n/a	n/a	Rank:	156/262	2016-17 Last 5 Years		118/225
Academic Performance	2013	2014	2015	2016	2017	Trend
Average exam mark	66.0	64.6	63.8	64.0	62.2	▼
Percentage of exams failed	14.7	15.6	18.4	13.5	21.8	—
School vs exam mark difference	5.4	5.9	6.6	7.5	7.7	▼
Language Arts gender gap	n/a	n/a	n/a	F 1.0	F 2.0	n/a
Math gender gap	n/a	n/a	n/a	F 3.5	M 3.6	n/a
Courses taken per student	n/a	n/a	n/a	2.9	3.1	n/a
Diploma completion rate	82.0	84.1	84.4	84.2	84.1	—
Delayed advancement rate	19.8	16.8	15.0	13.2	27.0	—
Overall rating out of 10	6.7	6.5	6.2	6.3	5.5	▼

BROOKS AREA

Bassano [Public] Bassano		Gr 12 Enrollment: 24				
ESL (%)	5.8	Special needs (%)	10.2	Alt. French (%)		0.0
Actual rating vs predicted based on parents' avg. inc. of \$ n/a	n/a	Rank:	170/262	2016-17 Last 5 Years		159/225
Academic Performance	2013	2014	2015	2016	2017	Trend
Average exam mark	61.9	64.0	60.0	57.2	62.9	—
Percentage of exams failed	15.9	15.2	26.0	31.0	18.4	—
School vs exam mark difference	8.1	5.6	13.2	13.7	13.3	—
Language Arts gender gap	n/a	n/a	n/a	n/a	n/a	n/a
Math gender gap	n/a	n/a	n/a	n/a	n/a	n/a
Courses taken per student	n/a	n/a	n/a	3.1	3.7	n/a
Diploma completion rate	80.0	92.9	92.6	82.6	95.0	—
Delayed advancement rate	15.7	3.6	8.4	26.1	19.2	—
Overall rating out of 10	5.6	7.0	5.3	3.7	5.7	—

Brooks [Public] Brooks		Gr 12 Enrollment: 227				
ESL (%)	11.7	Special needs (%)	15.6	Alt. French (%)		0.0
Actual rating vs predicted based on parents' avg. inc. of \$ n/a	n/a	Rank:	239/262	2016-17 Last 5 Years		210/225
Academic Performance	2013	2014	2015	2016	2017	Trend
Average exam mark	61.3	59.5	62.1	58.1	58.2	—
Percentage of exams failed	24.7	27.2	22.5	29.8	29.5	—
School vs exam mark difference	6.8	9.4	8.9	12.4	12.3	▼
Language Arts gender gap	n/a	n/a	n/a	F 0.6	F 1.2	n/a
Math gender gap	n/a	n/a	n/a	F 7.0	M 1.1	n/a
Courses taken per student	n/a	n/a	n/a	2.9	3.3	n/a
Diploma completion rate	69.8	67.8	68.6	69.7	66.5	—
Delayed advancement rate	33.8	36.2	36.8	39.3	39.2	—
Overall rating out of 10	4.6	3.9	4.6	3.5	3.9	—

Duchess [Public] Duchess		Gr 12 Enrollment: 24				
ESL (%)	2.3	Special needs (%)	12.3	Alt. French (%)		0.0
Actual rating vs predicted based on parents' avg. inc. of \$ n/a	n/a	Rank:	249/262	2016-17 Last 5 Years		209/225
Academic Performance	2013	2014	2015	2016	2017	Trend
Average exam mark	63.7	57.0	57.9	59.0	54.9	▼
Percentage of exams failed	17.9	28.8	27.2	25.0	39.4	▼
School vs exam mark difference	12.6	16.1	16.6	13.7	21.0	—
Language Arts gender gap	n/a	n/a	n/a	n/a	n/a	n/a
Math gender gap	n/a	n/a	n/a	n/a	n/a	n/a
Courses taken per student	n/a	n/a	n/a	3.9	4.1	n/a
Diploma completion rate	90.0	96.8	87.5	77.3	80.0	▼
Delayed advancement rate	9.9	6.9	21.7	26.1	28.5	▼
Overall rating out of 10	6.0	4.5	4.1	4.2	2.9	▼

Rosemary [Public] Rosemary		Gr 12 Enrollment: 19				
ESL (%)	9.0	Special needs (%)	9.4	Alt. French (%)		0.0
Actual rating vs predicted based on parents' avg. inc. of \$ n/a	n/a	Rank:	49/262	2016-17 Last 5 Years		83/225
Academic Performance	2013	2014	2015	2016	2017	Trend
Average exam mark	66.7	63.8	65.3	65.3	66.5	—
Percentage of exams failed	8.4	7.7	9.5	13.9	10.4	—
School vs exam mark difference	10.3	12.4	11.0	11.4	9.4	—
Language Arts gender gap	n/a	n/a	n/a	n/a	n/a	n/a
Math gender gap	n/a	n/a	n/a	n/a	n/a	n/a
Courses taken per student	n/a	n/a	n/a	3.2	4.1	n/a
Diploma completion rate	100.0	81.3	95.8	95.0	100.0	—
Delayed advancement rate	5.0	18.1	3.8	15.8	4.5	—
Overall rating out of 10	7.2	5.8	6.7	5.8	7.3	—

St. Joseph's [Separate] Brooks		Gr 12 Enrollment: 92				
ESL (%)	60.6	Special needs (%)	8.2	Alt. French (%)		0.0
Actual rating vs predicted based on parents' avg. inc. of \$ n/a	n/a	Rank:	210/262	2016-17 Last 5 Years		138/225
Academic Performance	2013	2014	2015	2016	2017	Trend
Average exam mark	66.7	61.3	63.5	66.5	60.2	—
Percentage of exams failed	10.7	18.3	20.0	13.2	24.9	—
School vs exam mark difference	6.7	9.8	9.5	10.4	12.9	▼
Language Arts gender gap	n/a	n/a	n/a	F 1.5	F 3.7	n/a
Math gender gap	n/a	n/a	n/a	F 0.9	F 7.2	n/a
Courses taken per student	n/a	n/a	n/a	3.5	3.6	n/a
Diploma completion rate	92.2	79.2	87.1	96.1	89.3	—
Delayed advancement rate	15.5	26.8	16.2	21.8	17.3	—
Overall rating out of 10	7.2	5.3	5.7	6.6	4.8	—

CALGARY

Bears paw Christian [Private] Calgary		Gr 12 Enrollment: 43				
ESL (%)	2.9	Special needs (%)	9.9	Alt. French (%)		0.0
Actual rating vs predicted based on parents' avg. inc. of \$ n/a	n/a	Rank:	10/262	2016-17 Last 5 Years		6/225
Academic Performance	2013	2014	2015	2016	2017	Trend
Average exam mark	69.5	73.3	73.6	74.8	74.9	▲
Percentage of exams failed	9.6	2.5	4.3	4.1	5.6	—
School vs exam mark difference	5.5	5.2	4.0	5.4	4.6	▲
Language Arts gender gap	n/a	n/a	n/a	n/a	F 3.4	n/a
Math gender gap	n/a	n/a	n/a	n/a	F 3.5	n/a
Courses taken per student	n/a	n/a	n/a	4.6	4.8	n/a
Diploma completion rate	83.3	100.0	100.0	100.0	90.5	—
Delayed advancement rate	15.5	0.0	0.0	0.0	9.5	—
Overall rating out of 10	7.2	9.0	9.1	9.4	8.9	—

Bishop Carroll [Separate] Calgary		Gr 12 Enrollment: 345				
ESL (%)	6.5	Special needs (%)	15.6	Alt. French (%)		0.0
Actual rating vs predicted based on parents' avg. inc. of \$ n/a	n/a	Rank:	36/262	2016-17 Last 5 Years		30/225
Academic Performance	2013	2014	2015	2016	2017	Trend
Average exam mark	73.2	72.2	73.8	71.9	72.9	—
Percentage of exams failed	6.9	7.3	6.2	9.3	8.3	—
School vs exam mark difference	4.6	5.6	6.1	7.4	8.1	▼
Language Arts gender gap	n/a	n/a	n/a	M 0.3	F 1.8	n/a
Math gender gap	n/a	n/a	n/a	M 3.2	M 2.9	n/a
Courses taken per student	n/a	n/a	n/a	3.5	3.7	n/a
Diploma completion rate	78.3	77.3	86.7	87.0	84.9	—
Delayed advancement rate	20.7	27.2	18.6	19.5	21.9	—
Overall rating out of 10	7.7	7.5	8.1	7.6	7.6	—

Bishop Grandin [Separate] Calgary		Gr 12 Enrollment: 476				
ESL (%)	30.2	Special needs (%)	17.4	Alt. French (%)		8.4
Actual rating vs predicted based on parents' avg. inc. of \$ n/a	n/a	Rank				

Calgary Christian [Public] Calgary		Gr 12 Enrollment: 48				
ESL (%)	n/a	Special needs (%): 11.6			Alt. French (%): 0.0	
Actual rating vs predicted based on parents' avg. inc. of \$ n/a: n/a						
		Rank:	2016-17	Last 5 Years		
			56/262	21/225		
Academic Performance	2013	2014	2015	2016	2017	Trend
Average exam mark	71.2	69.4	68.5	71.5	66.8	—
Percentage of exams failed	8.1	9.1	11.9	7.4	15.8	—
School vs exam mark difference	6.2	5.6	7.9	6.1	8.2	—
Language Arts gender gap	n/a	n/a	n/a	F 1.1	F 6.2	n/a
Math gender gap	n/a	n/a	n/a	F 8.8	F 5.3	n/a
Courses taken per student	n/a	n/a	n/a	4.0	4.0	n/a
Diploma completion rate	100.0	97.0	100.0	93.1	97.8	—
Delayed advancement rate	3.5	3.1	4.4	10.9	7.7	—
Overall rating out of 10	8.4	8.2	7.6	8.1	7.2	—

Calgary French & International [Private] Calgary		Gr 12 Enrollment: 17				
ESL (%)	16.2	Special needs (%): 5.7			Alt. French (%): n/a	
Actual rating vs predicted based on parents' avg. inc. of \$ n/a: n/a						
		Rank:	2016-17	Last 5 Years		
			1/262	n/a		
Academic Performance	2013	2014	2015	2016	2017	Trend
Average exam mark	n/a	70.5	n/a	n/a	79.9	n/a
Percentage of exams failed	n/a	8.3	n/a	n/a	1.9	n/a
School vs exam mark difference	n/a	8.4	n/a	n/a	5.6	n/a
Language Arts gender gap	n/a	n/a	n/a	n/a	M 1.1	n/a
Math gender gap	n/a	n/a	n/a	n/a	M 8.9	n/a
Courses taken per student	n/a	n/a	n/a	n/a	5.8	n/a
Diploma completion rate	n/a	100.0	n/a	n/a	100.0	n/a
Delayed advancement rate	n/a	n/a	n/a	n/a	n/a	n/a
Overall rating out of 10	n/a	8.3	n/a	n/a	10.0	n/a

Calgary Islamic [Public] Calgary		Gr 12 Enrollment: 28				
ESL (%)	99.1	Special needs (%): n/a			Alt. French (%): 0.0	
Actual rating vs predicted based on parents' avg. inc. of \$ n/a: n/a						
		Rank:	2016-17	Last 5 Years		
			69/262	172/225		
Academic Performance	2013	2014	2015	2016	2017	Trend
Average exam mark	52.6	56.9	66.9	65.8	67.3	▲
Percentage of exams failed	41.3	33.3	12.8	23.0	17.6	—
School vs exam mark difference	17.5	11.1	5.0	7.1	10.9	—
Language Arts gender gap	n/a	n/a	n/a	M 2.7	F 4.1	n/a
Math gender gap	n/a	n/a	n/a	F 0.6	F 1.8	n/a
Courses taken per student	n/a	n/a	n/a	3.9	4.5	n/a
Diploma completion rate	75.0	81.0	76.9	57.1	85.7	—
Delayed advancement rate	21.3	10.7	19.5	40.2	16.4	—
Overall rating out of 10	2.0	4.5	6.9	5.7	7.0	▲

Centennial [Public] Calgary		Gr 12 Enrollment: 600				
ESL (%)	9.6	Special needs (%): 21.3			Alt. French (%): n/a	
Actual rating vs predicted based on parents' avg. inc. of \$ n/a: n/a						
		Rank:	2016-17	Last 5 Years		
			40/262	24/225		
Academic Performance	2013	2014	2015	2016	2017	Trend
Average exam mark	71.0	72.3	69.8	72.1	69.9	—
Percentage of exams failed	7.8	6.1	8.9	7.0	9.5	—
School vs exam mark difference	2.4	1.3	2.7	2.4	2.3	—
Language Arts gender gap	n/a	n/a	n/a	F 0.2	M 0.4	n/a
Math gender gap	n/a	n/a	n/a	F 3.7	F 1.4	n/a
Courses taken per student	n/a	n/a	n/a	3.5	3.4	n/a
Diploma completion rate	77.3	82.2	75.0	81.1	77.8	—
Delayed advancement rate	24.3	19.0	23.0	17.9	21.0	—
Overall rating out of 10	7.6	8.4	7.4	8.0	7.5	—

Central Memorial [Public] Calgary		Gr 12 Enrollment: 230				
ESL (%)	7.7	Special needs (%): 31.1			Alt. French (%): n/a	
Actual rating vs predicted based on parents' avg. inc. of \$ n/a: n/a						
		Rank:	2016-17	Last 5 Years		
			178/262	125/225		
Academic Performance	2013	2014	2015	2016	2017	Trend
Average exam mark	67.0	65.7	67.1	65.0	63.4	—
Percentage of exams failed	13.0	15.3	13.1	18.4	19.1	▼
School vs exam mark difference	5.7	6.3	6.1	9.6	11.0	▼
Language Arts gender gap	n/a	n/a	n/a	F 5.6	F 2.2	n/a
Math gender gap	n/a	n/a	n/a	F 3.1	F 6.2	n/a
Courses taken per student	n/a	n/a	n/a	3.3	3.2	n/a
Diploma completion rate	74.9	77.4	75.3	78.0	76.1	—
Delayed advancement rate	24.8	23.3	23.4	24.3	24.6	—
Overall rating out of 10	6.4	6.4	6.5	5.6	5.4	▼

Chestermere [Public] Calgary		Gr 12 Enrollment: 214				
ESL (%)	16.6	Special needs (%): 21.2			Alt. French (%): 0.0	
Actual rating vs predicted based on parents' avg. inc. of \$ n/a: n/a						
		Rank:	2016-17	Last 5 Years		
			150/262	105/225		
Academic Performance	2013	2014	2015	2016	2017	Trend
Average exam mark	63.2	62.9	63.5	63.9	61.3	—
Percentage of exams failed	17.3	19.2	19.5	17.1	23.0	—
School vs exam mark difference	6.4	6.0	5.5	9.2	9.2	—
Language Arts gender gap	n/a	n/a	n/a	F 1.6	F 1.5	n/a
Math gender gap	n/a	n/a	n/a	F 1.9	M 0.5	n/a
Courses taken per student	n/a	n/a	n/a	3.3	3.4	n/a
Diploma completion rate	91.2	86.3	90.4	86.8	91.4	—
Delayed advancement rate	7.9	11.7	10.0	11.7	8.7	—
Overall rating out of 10	6.6	6.3	6.6	6.2	5.8	▼

Clear Water [Separate] Calgary		Gr 12 Enrollment: 11				
ESL (%)	5.1	Special needs (%): 1.8			Alt. French (%): 0.0	
Actual rating vs predicted based on parents' avg. inc. of \$ n/a: n/a						
		Rank:	2016-17	Last 5 Years		
			92/262	n/a		
Academic Performance	2013	2014	2015	2016	2017	Trend
Average exam mark	68.9	70.6	n/a	70.6	67.3	n/a
Percentage of exams failed	10.6	8.9	n/a	9.2	15.0	n/a
School vs exam mark difference	10.7	13.7	n/a	11.9	14.1	n/a
Language Arts gender gap	n/a	n/a	n/a	F 7.3	n/a	n/a
Math gender gap	n/a	n/a	n/a	F 6.3	n/a	n/a
Courses taken per student	n/a	n/a	n/a	4.8	3.9	n/a
Diploma completion rate	87.5	87.0	n/a	100.0	100.0	n/a
Delayed advancement rate	7.9	0.0	n/a	0.0	0.0	n/a
Overall rating out of 10	6.7	6.9	n/a	8.1	6.6	n/a

Crescent Heights [Public] Calgary		Gr 12 Enrollment: 659				
ESL (%)	9.4	Special needs (%): 16.4			Alt. French (%): 0.0	
Actual rating vs predicted based on parents' avg. inc. of \$ n/a: n/a						
		Rank:	2016-17	Last 5 Years		
			99/262	67/225		
Academic Performance	2013	2014	2015	2016	2017	Trend
Average exam mark	66.9	68.2	67.0	66.8	65.9	—
Percentage of exams failed	13.8	14.1	16.0	16.9	17.5	▼
School vs exam mark difference	2.9	4.3	4.7	6.2	6.1	▼
Language Arts gender gap	n/a	n/a	n/a	F 0.3	F 3.4	n/a
Math gender gap	n/a	n/a	n/a	M 0.1	F 8.3	n/a
Courses taken per student	n/a	n/a	n/a	4.1	3.9	n/a
Diploma completion rate	80.6	75.1	77.0	82.0	80.4	—
Delayed advancement rate	17.9	23.3	20.8	14.9	16.8	—
Overall rating out of 10	6.9	6.8	6.5	7.1	6.5	—

Dr. E. P. Scarlett [Public] Calgary		Gr 12 Enrollment: 568				
ESL (%)	11.6	Special needs (%): 15.3			Alt. French (%): 16.8	
Actual rating vs predicted based on parents' avg. inc. of \$ n/a: n/a						
		Rank:	2016-17	Last 5 Years		
			36/262	21/225		
Academic Performance	2013	2014	2015	2016	2017	Trend
Average exam mark	70.9	72.0	71.7	71.1	70.7	—
Percentage of exams failed	8.4	7.4	7.8	8.7	10.6	—
School vs exam mark difference	4.8	4.6	4.8	6.7	5.9	—
Language Arts gender gap	n/a	n/a	n/a	F 1.5	F 1.7	n/a
Math gender gap	n/a	n/a	n/a	F 1.6	F 0.7	n/a
Courses taken per student	n/a	n/a	n/a	4.4	4.0	n/a
Diploma completion rate	83.8	87.7	85.7	86.0	82.0	—
Delayed advancement rate	16.2	12.1	12.7	12.3	16.8	—
Overall rating out of 10	7.6	8.1	7.9	8.1	7.6	—

Edge [Private] Calgary		Gr 12 Enrollment: 47				
ESL (%)	0.0	Special needs (%): 0.0			Alt. French (%): 0.0	
Actual rating vs predicted based on parents' avg. inc. of \$ n/a: n/a						
		Rank:	2016-17	Last 5 Years		
			92/262	36/225		
Academic Performance	2013	2014	2015	2016	2017	Trend
Average exam mark	72.1	70.0	69.5	70.2	67.2	—
Percentage of exams failed	5.0	9.0	10.5	9.4	15.5	—
School vs exam mark difference	4.8	8.3	8.5	9.3	11.2	▼
Language Arts gender gap	n/a	n/a	n/a	F 9.1	M 0.4	n/a
Math gender gap	n/a	n/a	n/a	F 5.5	F 4.4	n/a
Courses taken per student	n/a	n/a	n/a	4.0	3.8	n/a
Diploma completion rate	92.3	98.2	98.1	92.3	84.8	—
Delayed advancement rate	8.4	5.8	9.9	16.8	21.5	▼
Overall rating out of 10	8.2	7.9	7.5	7.2	6.6	▼

Ernest Manning [Public] Calgary		Gr 12 Enrollment: 546				
ESL (%)	13.4	Special needs (%): 18.5			Alt. French (%): n/a	
Actual rating vs predicted based on parents' avg. inc. of \$ n/a: n/a						
		Rank:	2016-17	Last 5 Years		
			30/262	30/225		
Academic Performance	2013	2014	2015	2016	2017	Trend
Average exam mark	71.6	72.2	72.2	72.7	73.5	▲
Percentage of exams failed	9.2	7.9	7.9	7.4	6.7	▲
School vs exam mark difference	3.5	3.6	3.8	4.5	5.4	—
Language Arts gender gap	n/a	n/a	n/a	F 3.1	F 3.7	n/a
Math gender gap	n/a	n/a	n/a	F 0.4	F 0.8	n/a
Courses taken per student	n/a	n/a	n/a	3.7	4.0	n/a
Diploma completion rate	71.3	76.2	77.4	78.0	81.2	▲
Delayed advancement rate	30.8	27.2	21.7	22.0	21.1	▲
Overall rating out of 10	7.2	7.7	7.7	7.8	7.9	▲

Father Lacombe [Separate] Calgary		Gr 12 Enrollment: 335				
ESL (%)	60.0	Special needs (%): 12.5			Alt. French (%): 0.0	
Actual rating vs predicted based on parents' avg. inc. of \$ n/a: n/a						
		Rank:	2016-17	Last 5 Years		
			161/262	198/225		
Academic Performance	2013	2014	2015	2016	2017	Trend
Average exam mark	58.8	60.5	62.4	59.9	61.3	—
Percentage of exams failed	30.5	27.0	21.9	26.1	23.3	—
School vs exam mark difference	7.0	7.3	5.1	6.9	7.2	—
Language Arts gender gap	n/a	n/a	n/a	F 1.1	F 0.4	n/a
Math gender gap	n/a	n/a	n/a	F 8.5	M 1.0	n/a
Courses taken per student	n/a	n/a	n/a	3.0	3.4	n/a
Diploma completion rate	63.0	75.7	70.9	75.3	80.8	—
Delayed advancement rate	37.2	30.3	33.7	28.0	21.0	▲
Overall rating out of 10	3.5	4.8	5.2	4.5	5.6	—

Foothills Academy [Private] Calgary		Gr 12 Enrollment: 23				
ESL (%)						

John G Diefenbaker [Public] Calgary		Gr 12 Enrollment: 511					
ESL (%)	21.8	Special needs (%)		14.9		Alt. French (%)	0.0
Actual rating vs predicted based		2016-17		Last 5 Years			
on parents' avg. inc. of \$ n/a		Rank: 56/262		51/225			
Academic Performance	2013	2014	2015	2016	2017	Trend	
Average exam mark	68.9	69.5	69.5	69.0	70.5	▲	
Percentage of exams failed	11.7	13.1	12.9	12.4	11.6	—	
School vs exam mark difference	6.0	5.9	6.0	7.5	7.0	—	
Language Arts gender gap	n/a	n/a	n/a	F 2.1	F 2.8	n/a	
Math gender gap	n/a	n/a	n/a	F 1.0	M 0.3	n/a	
Courses taken per student	n/a	n/a	n/a	4.0	4.1	n/a	
Diploma completion rate	87.1	78.8	82.3	82.0	77.3	▼	
Delayed advancement rate	11.7	19.5	15.3	17.1	21.2	▼	
Overall rating out of 10	7.2	6.9	7.0	7.2	7.2	—	

Lester B. Pearson [Public] Calgary		Gr 12 Enrollment: 564					
ESL (%)	30.0	Special needs (%)		12.8		Alt. French (%)	6.5
Actual rating vs predicted based		2016-17		Last 5 Years			
on parents' avg. inc. of \$ n/a		Rank: 215/262		184/225			
Academic Performance	2013	2014	2015	2016	2017	Trend	
Average exam mark	63.2	63.1	60.7	59.9	60.6	▼	
Percentage of exams failed	19.5	21.8	27.0	27.7	28.1	▼	
School vs exam mark difference	6.3	7.8	8.8	11.1	9.9	▼	
Language Arts gender gap	n/a	n/a	n/a	F 1.8	F 2.5	n/a	
Math gender gap	n/a	n/a	n/a	M 6.0	M 1.0	n/a	
Courses taken per student	n/a	n/a	n/a	3.7	3.6	n/a	
Diploma completion rate	78.2	77.5	70.4	70.1	69.6	▼	
Delayed advancement rate	22.0	19.9	27.5	28.3	32.6	▼	
Overall rating out of 10	5.7	5.6	4.5	4.7	4.7	▼	

Lord Beaverbrook [Public] Calgary		Gr 12 Enrollment: 543					
ESL (%)	9.8	Special needs (%)		26.8		Alt. French (%)	0.0
Actual rating vs predicted based		2016-17		Last 5 Years			
on parents' avg. inc. of \$ n/a		Rank: 133/262		92/225			
Academic Performance	2013	2014	2015	2016	2017	Trend	
Average exam mark	65.6	66.0	66.8	65.1	65.1	—	
Percentage of exams failed	13.5	13.6	11.7	15.9	15.6	—	
School vs exam mark difference	3.4	3.2	4.5	5.3	5.2	—	
Language Arts gender gap	n/a	n/a	n/a	F 1.3	M 0.4	n/a	
Math gender gap	n/a	n/a	n/a	M 1.2	F 1.6	n/a	
Courses taken per student	n/a	n/a	n/a	3.1	3.1	n/a	
Diploma completion rate	75.2	77.5	71.4	74.0	71.8	—	
Delayed advancement rate	26.6	23.2	26.5	25.0	26.9	—	
Overall rating out of 10	6.5	6.9	6.5	6.3	6.1	—	

Master's College [Public] Calgary		Gr 12 Enrollment: 23					
ESL (%)	0.0	Special needs (%)		7.6		Alt. French (%)	0.0
Actual rating vs predicted based		2016-17		Last 5 Years			
on parents' avg. inc. of \$ n/a		Rank: 130/262		49/225			
Academic Performance	2013	2014	2015	2016	2017	Trend	
Average exam mark	68.3	67.7	67.2	70.4	68.9	—	
Percentage of exams failed	9.1	15.1	15.7	13.6	11.9	—	
School vs exam mark difference	11.8	13.2	9.0	6.3	7.3	▲	
Language Arts gender gap	n/a	n/a	n/a	M 0.2	n/a	n/a	
Math gender gap	n/a	n/a	n/a	M 38.1	n/a	n/a	
Courses taken per student	n/a	n/a	n/a	4.4	4.0	n/a	
Diploma completion rate	96.8	96.4	100.0	91.7	100.0	—	
Delayed advancement rate	0.4	0.0	0.0	10.5	9.6	▼	
Overall rating out of 10	7.2	6.8	7.2	7.2	7.7	—	

National Sport [Public] Calgary		Gr 12 Enrollment: 48					
ESL (%)	n/a	Special needs (%)		15.0		Alt. French (%)	0.0
Actual rating vs predicted based		2016-17		Last 5 Years			
on parents' avg. inc. of \$ n/a		Rank: 150/262		73/225			
Academic Performance	2013	2014	2015	2016	2017	Trend	
Average exam mark	73.4	71.6	70.0	67.3	70.2	▼	
Percentage of exams failed	5.6	8.0	9.8	8.9	7.0	—	
School vs exam mark difference	6.0	7.6	8.7	10.3	10.0	▼	
Language Arts gender gap	n/a	n/a	n/a	M 1.4	F 15.9	n/a	
Math gender gap	n/a	n/a	n/a	F 8.7	M 5.4	n/a	
Courses taken per student	n/a	n/a	n/a	3.7	3.5	n/a	
Diploma completion rate	75.0	82.1	73.2	56.8	66.7	—	
Delayed advancement rate	23.6	13.9	21.6	43.6	36.1	—	
Overall rating out of 10	7.6	7.6	6.7	6.0	5.8	▼	

Notre Dame [Separate] Calgary		Gr 12 Enrollment: 479					
ESL (%)	27.8	Special needs (%)		13.4		Alt. French (%)	0.0
Actual rating vs predicted based		2016-17		Last 5 Years			
on parents' avg. inc. of \$ n/a		Rank: 49/262		67/225			
Academic Performance	2013	2014	2015	2016	2017	Trend	
Average exam mark	63.1	65.7	65.3	65.8	67.7	▲	
Percentage of exams failed	20.5	15.4	15.2	15.9	12.4	▲	
School vs exam mark difference	6.8	5.5	5.1	5.5	5.1	▲	
Language Arts gender gap	n/a	n/a	n/a	M 1.2	F 3.6	n/a	
Math gender gap	n/a	n/a	n/a	F 1.6	F 4.4	n/a	
Courses taken per student	n/a	n/a	n/a	3.9	3.7	n/a	
Diploma completion rate	80.3	86.3	85.2	89.6	88.7	▲	
Delayed advancement rate	18.9	13.8	17.6	14.0	13.4	▲	
Overall rating out of 10	5.7	6.9	6.8	7.2	7.3	▲	

Queen Elizabeth [Public] Calgary		Gr 12 Enrollment: 137					
ESL (%)	11.5	Special needs (%)		24.0		Alt. French (%)	0.0
Actual rating vs predicted based		2016-17		Last 5 Years			
on parents' avg. inc. of \$ n/a		Rank: 156/262		62/225			
Academic Performance	2013	2014	2015	2016	2017	Trend	
Average exam mark	73.1	72.4	73.1	70.3	67.6	▼	
Percentage of exams failed	11.0	11.2	10.6	13.0	15.0	—	
School vs exam mark difference	3.1	5.9	5.4	8.6	8.6	▼	
Language Arts gender gap	n/a	n/a	n/a	M 1.0	M 2.6	n/a	
Math gender gap	n/a	n/a	n/a	M 2.3	M 3.1	n/a	
Courses taken per student	n/a	n/a	n/a	3.6	3.5	n/a	
Diploma completion rate	76.4	80.4	75.6	73.4	61.8	▼	
Delayed advancement rate	26.6	24.8	27.4	27.5	45.0	—	
Overall rating out of 10	7.5	7.4	7.3	6.7	5.7	▼	

Robert Thirsk [Public] Calgary		Gr 12 Enrollment: 436					
ESL (%)	13.0	Special needs (%)		21.4		Alt. French (%)	0.0
Actual rating vs predicted based		2016-17		Last 5 Years			
on parents' avg. inc. of \$ n/a		Rank: 133/262		n/a			
Academic Performance	2013	2014	2015	2016	2017	Trend	
Average exam mark	n/a	n/a	63.4	64.0	63.9	n/a	
Percentage of exams failed	n/a	n/a	20.2	20.0	22.0	n/a	
School vs exam mark difference	n/a	n/a	11.4	12.1	11.4	n/a	
Language Arts gender gap	n/a	n/a	n/a	M 0.3	F 1.3	n/a	
Math gender gap	n/a	n/a	n/a	F 1.6	M 5.5	n/a	
Courses taken per student	n/a	n/a	n/a	3.9	4.0	n/a	
Diploma completion rate	n/a	n/a	75.4	84.1	87.0	n/a	
Delayed advancement rate	n/a	n/a	20.9	15.4	11.4	n/a	
Overall rating out of 10	n/a	n/a	5.2	6.2	6.1	n/a	

Rundle College [Private] Calgary		Gr 12 Enrollment: 73					
ESL (%)	0.0	Special needs (%)		0.0		Alt. French (%)	0.0
Actual rating vs predicted based		2016-17		Last 5 Years			
on parents' avg. inc. of \$ n/a		Rank: 1/262		3/225			
Academic Performance	2013	2014	2015	2016	2017	Trend	
Average exam mark	81.6	79.3	82.5	81.2	82.9	—	
Percentage of exams failed	1.1	1.2	1.5	2.2	1.6	—	
School vs exam mark difference	3.0	4.4	3.0	4.9	3.6	—	
Language Arts gender gap	n/a	n/a	n/a	F 3.4	F 4.8	n/a	
Math gender gap	n/a	n/a	n/a	M 1.6	M 1.0	n/a	
Courses taken per student	n/a	n/a	n/a	5.2	5.1	n/a	
Diploma completion rate	97.2	100.0	100.0	100.0	98.6	—	
Delayed advancement rate	1.3	0.4	2.1	0.0	0.0	—	
Overall rating out of 10	10.0	9.7	10.0	10.0	10.0	—	

Rundle College Academy [Private] Calgary		Gr 12 Enrollment: 25					
ESL (%)	0.0	Special needs (%)		n/a		Alt. French (%)	0.0
Actual rating vs predicted based		2016-17		Last 5 Years			
on parents' avg. inc. of \$ n/a		Rank: 12/262		24/225			
Academic Performance	2013	2014	2015	2016	2017	Trend	
Average exam mark	66.1	67.2	68.1	66.0	69.6	—	
Percentage of exams failed	9.4	9.9	8.1	13.8	6.1	—	
School vs exam mark difference	7.2	7.5	10.9	9.4	7.1	—	
Language Arts gender gap	n/a	n/a	n/a	F 1.9	M 1.5	n/a	
Math gender gap	n/a	n/a	n/a	M 4.3	M 0.4	n/a	
Courses taken per student	n/a	n/a	n/a	4.7	4.0	n/a	
Diploma completion rate	100.0	97.0	100.0	100.0	100.0	—	
Delayed advancement rate	0.0	3.0	0.0	1.3	6.7	—	
Overall rating out of 10	7.6	7.6	7.5	7.8	8.3	▲	

Sir Winston Churchill [Public] Calgary		Gr 12 Enrollment: 680					
ESL (%)	15.7	Special needs (%)		10.5		Alt. French (%)	0.0
Actual rating vs predicted based		2016-17		Last 5 Years			
on parents' avg. inc. of \$ n/a		Rank: 26/262		11/225			
Academic Performance	2013	2014	2015	2016	2017	Trend	
Average exam mark	75.3	74.3	75.4	74.5	73.4	—	
Percentage of exams failed	6.7	7.8	7.8	8.5	11.1	—	
School vs exam mark difference	1.3	3.0	3.1	4.5	4.8	▼	
Language Arts gender gap	n/a	n/a	n/a	F 3.4	F 2.5	n/a	
Math gender gap	n/a	n/a	n/a	M 1.1	F 3.5	n/a	
Courses taken per student	n/a	n/a	n/a	4.5	4.4	n/a	
Diploma completion rate	86.0	85.6	86.6	85.6	85.1	▼	
Delayed advancement rate	13.2	13.1	11.1	15.1	14.6	—	
Overall rating out of 10	8.7	8.5	8.5	8.5	8.1	▼	

Springbank [Public] Calgary		Gr 12 Enrollment: 132					
ESL (%)	1.4	Special needs (%)		14.5		Alt. French (%)	13.9
Actual rating vs predicted based		2016-17		Last 5 Years			
on parents' avg. inc. of \$ n/a		Rank: 12/262		12/225			

William Aberhart [Public] Calgary		Gr 12 Enrollment: 499				
ESL (%): 9.8	Special needs (%): 15.8	Alt. French (%): n/a		2016-17 Last 5 Years		
Actual rating vs predicted based on parents' avg. inc. of \$ n/a: n/a		Rank: 11/262		16/225		
Academic Performance	2013	2014	2015	2016	2017	Trend
Average exam mark	70.9	71.5	72.2	69.6	73.6	—
Percentage of exams failed	8.2	7.6	6.9	10.6	5.8	—
School vs exam mark difference	4.4	4.2	3.6	6.6	5.4	—
Language Arts gender gap	n/a	n/a	n/a	F 2.6	F 3.4	n/a
Math gender gap	n/a	n/a	n/a	F 2.9	M 0.1	n/a
Courses taken per student	n/a	n/a	n/a	4.5	4.7	n/a
Diploma completion rate	85.3	85.5	82.8	83.1	90.2	—
Delayed advancement rate	13.7	13.4	13.9	15.0	9.1	—
Overall rating out of 10	7.7	8.0	8.0	7.8	8.8	—

CAMROSE AREA

Bawlf [Public] Bawlf		Gr 12 Enrollment: 21				
ESL (%): n/a	Special needs (%): 10.9	Alt. French (%): 0.0		2016-17 Last 5 Years		
Actual rating vs predicted based on parents' avg. inc. of \$ n/a: n/a		Rank: 65/262		45/225		
Academic Performance	2013	2014	2015	2016	2017	Trend
Average exam mark	68.1	65.5	68.8	66.6	71.6	—
Percentage of exams failed	9.2	15.8	10.0	12.3	5.9	—
School vs exam mark difference	7.1	11.1	6.6	8.0	10.9	—
Language Arts gender gap	n/a	n/a	n/a	n/a	n/a	n/a
Math gender gap	n/a	n/a	n/a	n/a	n/a	n/a
Courses taken per student	n/a	n/a	n/a	3.3	3.5	n/a
Diploma completion rate	100.0	100.0	100.0	92.0	85.7	▼
Delayed advancement rate	7.4	0.0	4.2	11.8	17.7	—
Overall rating out of 10	7.9	6.8	7.9	6.9	7.1	—

Camrose [Public] Camrose		Gr 12 Enrollment: 139				
ESL (%): 6.1	Special needs (%): 18.2	Alt. French (%): 4.0		2016-17 Last 5 Years		
Actual rating vs predicted based on parents' avg. inc. of \$ n/a: n/a		Rank: 207/262		166/225		
Academic Performance	2013	2014	2015	2016	2017	Trend
Average exam mark	66.1	65.5	64.2	60.9	62.4	▼
Percentage of exams failed	14.8	14.1	18.5	26.7	21.0	—
School vs exam mark difference	7.5	6.7	8.5	12.2	9.6	—
Language Arts gender gap	n/a	n/a	n/a	M 1.2	M 0.7	n/a
Math gender gap	n/a	n/a	n/a	F 0.3	F 20.2	n/a
Courses taken per student	n/a	n/a	n/a	3.4	3.4	n/a
Diploma completion rate	78.9	75.3	74.5	76.9	80.5	—
Delayed advancement rate	29.9	35.0	35.3	32.8	33.0	—
Overall rating out of 10	6.1	6.1	5.4	4.7	4.9	▼

Our Lady of Mount Pleasant [Separate] Camrose		Gr 12 Enrollment: 39				
ESL (%): 9.7	Special needs (%): 12.5	Alt. French (%): 0.0		2016-17 Last 5 Years		
Actual rating vs predicted based on parents' avg. inc. of \$ n/a: n/a		Rank: 139/262		195/225		
Academic Performance	2013	2014	2015	2016	2017	Trend
Average exam mark	64.6	66.1	62.0	56.3	63.2	—
Percentage of exams failed	8.8	35.3	19.7	30.7	18.0	—
School vs exam mark difference	10.8	15.2	12.0	13.9	8.7	—
Language Arts gender gap	n/a	n/a	n/a	M 5.1	n/a	n/a
Math gender gap	n/a	n/a	n/a	M 14.3	n/a	n/a
Courses taken per student	n/a	n/a	n/a	4.2	3.5	n/a
Diploma completion rate	90.9	72.7	87.2	88.4	80.6	—
Delayed advancement rate	9.0	26.3	15.5	13.1	20.4	—
Overall rating out of 10	6.5	3.1	5.3	4.6	6.0	—

Ryley [Public] Ryley		Gr 12 Enrollment: 23				
ESL (%): 0.0	Special needs (%): 24.8	Alt. French (%): 0.0		2016-17 Last 5 Years		
Actual rating vs predicted based on parents' avg. inc. of \$ n/a: n/a		Rank: 248/262		195/225		
Academic Performance	2013	2014	2015	2016	2017	Trend
Average exam mark	64.5	62.9	55.9	62.4	55.1	—
Percentage of exams failed	14.8	22.1	37.5	24.2	38.6	▼
School vs exam mark difference	6.9	5.4	13.1	7.8	13.4	—
Language Arts gender gap	n/a	n/a	n/a	n/a	n/a	n/a
Math gender gap	n/a	n/a	n/a	n/a	n/a	n/a
Courses taken per student	n/a	n/a	n/a	3.3	3.3	n/a
Diploma completion rate	82.4	75.8	66.7	75.0	76.2	—
Delayed advancement rate	27.6	24.6	46.0	24.9	n/a	n/a
Overall rating out of 10	6.3	5.8	3.1	5.4	3.2	—

COCHRANE/BRAGG CREEK AREA

Bow Valley [Public] Cochrane		Gr 12 Enrollment: 101				
ESL (%): n/a	Special needs (%): 26.1	Alt. French (%): n/a		2016-17 Last 5 Years		
Actual rating vs predicted based on parents' avg. inc. of \$ n/a: n/a		Rank: 92/262		73/225		
Academic Performance	2013	2014	2015	2016	2017	Trend
Average exam mark	68.9	65.1	65.2	60.9	65.5	—
Percentage of exams failed	5.7	12.8	14.0	19.7	11.1	—
School vs exam mark difference	3.4	6.5	8.1	8.6	6.9	—
Language Arts gender gap	n/a	n/a	n/a	F 4.5	F 5.2	n/a
Math gender gap	n/a	n/a	n/a	F 6.0	M 9.8	n/a
Courses taken per student	n/a	n/a	n/a	3.2	3.4	n/a
Diploma completion rate	88.5	84.8	92.2	88.7	92.4	—
Delayed advancement rate	16.7	18.7	10.8	13.7	20.4	—
Overall rating out of 10	8.0	6.6	6.7	5.6	6.6	—

Cochrane [Public] Cochrane		Gr 12 Enrollment: 188				
ESL (%): 1.5	Special needs (%): 16.9	Alt. French (%): 20.9		2016-17 Last 5 Years		
Actual rating vs predicted based on parents' avg. inc. of \$ n/a: n/a		Rank: 56/262		51/225		
Academic Performance	2013	2014	2015	2016	2017	Trend
Average exam mark	70.6	67.5	67.9	66.2	68.7	—
Percentage of exams failed	8.0	13.8	11.8	13.8	12.6	—
School vs exam mark difference	4.9	8.2	8.3	10.1	9.3	—
Language Arts gender gap	n/a	n/a	n/a	F 6.0	F 3.3	n/a
Math gender gap	n/a	n/a	n/a	M 0.8	F 11.8	n/a
Courses taken per student	n/a	n/a	n/a	4.3	4.3	n/a
Diploma completion rate	88.1	84.6	90.6	90.8	89.1	—
Delayed advancement rate	18.2	18.0	10.4	10.4	12.2	—
Overall rating out of 10	7.8	6.7	7.0	7.0	7.2	—

St. Timothy [Separate] Cochrane		Gr 12 Enrollment: 29				
ESL (%): 5.1	Special needs (%): 21.8	Alt. French (%): 0.0		2016-17 Last 5 Years		
Actual rating vs predicted based on parents' avg. inc. of \$ n/a: n/a		Rank: 65/262		18/225		
Academic Performance	2013	2014	2015	2016	2017	Trend
Average exam mark	69.5	68.6	72.5	69.4	71.3	—
Percentage of exams failed	5.8	10.8	6.2	10.7	5.7	—
School vs exam mark difference	3.6	3.5	2.5	4.9	5.8	—
Language Arts gender gap	n/a	n/a	n/a	M 0.2	F 2.6	n/a
Math gender gap	n/a	n/a	n/a	F 10.9	F 0.7	n/a
Courses taken per student	n/a	n/a	n/a	4.0	3.4	n/a
Diploma completion rate	96.9	89.5	100.0	84.1	86.2	—
Delayed advancement rate	3.4	8.2	10.4	25.1	55.2	▼
Overall rating out of 10	8.5	7.9	8.9	7.4	7.1	—

DRUMHELLER/THREE HILLS AREA

Drumheller [Public] Drumheller		Gr 12 Enrollment: 70				
ESL (%): 14.8	Special needs (%): 15.1	Alt. French (%): 0.0		2016-17 Last 5 Years		
Actual rating vs predicted based on parents' avg. inc. of \$ n/a: n/a		Rank: 198/262		212/225		
Academic Performance	2013	2014	2015	2016	2017	Trend
Average exam mark	62.0	59.5	58.1	59.9	60.2	—
Percentage of exams failed	29.1	28.4	32.3	29.5	29.0	—
School vs exam mark difference	10.3	9.5	9.1	9.7	12.3	—
Language Arts gender gap	n/a	n/a	n/a	F 2.1	F 2.6	n/a
Math gender gap	n/a	n/a	n/a	F 1.5	F 0.9	n/a
Courses taken per student	n/a	n/a	n/a	2.4	2.9	n/a
Diploma completion rate	54.2	71.6	60.2	80.8	79.7	—
Delayed advancement rate	46.7	35.9	46.0	28.8	23.3	—
Overall rating out of 10	3.3	4.4	3.2	4.1	4.5	—

South Central [Public] Oyen		Gr 12 Enrollment: 28				
ESL (%): n/a	Special needs (%): 22.5	Alt. French (%): 0.0		2016-17 Last 5 Years		
Actual rating vs predicted based on parents' avg. inc. of \$ n/a: n/a		Rank: 49/262		55/225		
Academic Performance	2013	2014	2015	2016	2017	Trend
Average exam mark	66.6	62.9	66.7	64.3	67.7	—
Percentage of exams failed	14.0	14.7	10.8	11.6	8.2	▲
School vs exam mark difference	5.6	8.4	5.9	8.7	7.8	—
Language Arts gender gap	n/a	n/a	n/a	F 0.2	n/a	n/a
Math gender gap	n/a	n/a	n/a	F 11.9	n/a	n/a
Courses taken per student	n/a	n/a	n/a	3.9	3.7	n/a
Diploma completion rate	87.0	89.7	94.3	89.3	89.3	—
Delayed advancement rate	8.9	10.2	10.0	12.9	16.1	▼
Overall rating out of 10	7.1	6.4	7.4	6.8	7.3	—

St. Anthony's [Separate] Drumheller		Gr 12 Enrollment: 20				
ESL (%): 13.0	Special needs (%): 6.9	Alt. French (%): 0.0		2016-17 Last 5 Years		
Actual rating vs predicted based on parents' avg. inc. of \$ n/a: n/a		Rank: 133/262		n/a		
Academic Performance	2013	2014	2015	2016	2017	Trend
Average exam mark	55.1	58.6	58.9	n/a	67.7	—
Percentage of exams failed	37.0	29.6	24.1	n/a	13.8	n/a
School vs exam mark difference	15.0	16.4	11.2	n/a	10.4	n/a
Language Arts gender gap	n/a	n/a	n/a	n/a	n/a	n/a
Math gender gap	n/a	n/a	n/a	n/a	n/a	n/a
Courses taken per student	n/a	n/a	n/a	n/a	3.4	n/a
Diploma completion rate	92.9	88.9	90.5	n/a	80.0	n/a
Delayed advancement rate	5.9	13.8	12.7	n/a	24.5	n/a
Overall rating out of 10	4.3	4.3	5.2	n/a	6.1	n/a

Three Hills [Public] Three Hills		Gr 12 Enrollment: 43				
ESL (%): 8.1	Special needs (%): 9.3	Alt. French (%): 0.0		2016-17 Last 5 Years		
Actual rating vs predicted based on parents' avg. inc. of \$ n/a: n/a		Rank: 85/262		83/225		
Academic Performance	2013	2014	2015	2016	2017	Trend
Average exam mark	65.3	63.5	66.4	69.1	68.6	—
Percentage of exams failed	17.7	20.7	15.0	10.5	15.9	—
School vs exam mark difference	6.6	6.7	6.7	7.9	8.5	—
Language Arts gender gap	n/a	n/a	n/a	M 5.8	M 6.2	n/a
Math gender gap	n/a	n/a	n/a	F 0.2	M 18.4	n/a
Courses taken per student	n/a	n/a	n/a	3.5	4.0	n/a
Diploma completion rate	81.6	89.2	81.1	94.4	97.6	—
Delayed advancement rate	10.7	5.2	11.3	3.2	0.5	—
Overall rating out of 10	6.1	6.4	6.6	7.4	6.7	—

Trochu Valley [Public] Trochu		Gr 12 Enrollment: 25				
ESL (%): 15.8	Special needs (%): 9.4	Alt. French (%): 0.0		2016-17 Last 5 Years		
Actual rating vs predicted based on parents' avg. inc. of \$ n/a: n/a		Rank: 56/262		195/225		
Academic Performance	2013	2014	2015	2016	2017	Trend
Average exam mark	53.6	59.1	60.1	58.7	64.0	▲
Percentage of exams failed	38.4	28.1	23.4	24.2	11.8	▲
School vs exam mark difference	11.8	15.2	11.5	11.9	5.2	—
Language Arts gender gap	n/a	n/a	n/a	n/a	n/a	n/a
Math gender gap	n/a	n/a	n/a	n/a	n/a	n/a
Courses taken per student	n/a	n/a	n/a	3.4	3.5	n/a
Diploma completion rate	53.8	86.7	92.3	93.5	96.0	▲
Delayed advancement rate	43.0	17.7	7.7	22.9	n/a	n/a
Overall rating out of 10	2.0	4.3	5.5	5.2	7.2	▲

Archbishop O'Leary [Separate] Edmonton		Gr 12 Enrollment: 535				
ESL (%): 10.8	Special needs (%): 6.6	Alt. French (%): 0.0				
Actual rating vs predicted based		2016-17		Last 5 Years		
on parents' avg. inc. of \$ n/a: n/a		Rank:	99/262	118/225		
Academic Performance	2013	2014	2015	2016	2017	Trend
Average exam mark	63.2	61.9	62.1	61.5	63.1	—
Percentage of exams failed	18.4	19.3	21.2	21.3	17.7	—
School vs exam mark difference	7.6	7.6	8.8	9.2	6.4	—
Language Arts gender gap	n/a	n/a	n/a	F 1.7	M 1.1	n/a
Math gender gap	n/a	n/a	n/a	F 3.0	F 7.0	n/a
Courses taken per student	n/a	n/a	n/a	3.7	3.6	n/a
Diploma completion rate	92.9	86.6	89.9	89.6	90.9	—
Delayed advancement rate	6.1	11.9	8.9	12.2	9.2	—
Overall rating out of 10	6.5	6.1	5.9	6.0	6.5	—

Archbishop Oscar Romero [Separate] Edmonton		Gr 12 Enrollment: 217				
ESL (%): 26.9	Special needs (%): 8.3	Alt. French (%): 0.0				
Actual rating vs predicted based		2016-17		Last 5 Years		
on parents' avg. inc. of \$ n/a: n/a		Rank:	124/262	118/225		
Academic Performance	2013	2014	2015	2016	2017	Trend
Average exam mark	63.5	61.6	62.6	63.0	63.2	—
Percentage of exams failed	18.0	21.9	17.9	19.6	17.9	—
School vs exam mark difference	6.6	7.7	9.7	8.8	9.2	—
Language Arts gender gap	n/a	n/a	n/a	M 2.4	M 0.2	n/a
Math gender gap	n/a	n/a	n/a	M 2.9	F 3.2	n/a
Courses taken per student	n/a	n/a	n/a	3.5	3.5	n/a
Diploma completion rate	85.2	93.1	90.7	89.9	86.6	—
Delayed advancement rate	16.2	7.4	7.9	11.2	15.5	—
Overall rating out of 10	6.3	6.1	6.1	6.2	6.2	—

Austin O'Brien [Separate] Edmonton		Gr 12 Enrollment: 258				
ESL (%): 12.3	Special needs (%): 13.5	Alt. French (%): 0.0				
Actual rating vs predicted based		2016-17		Last 5 Years		
on parents' avg. inc. of \$ n/a: n/a		Rank:	259/262	73/225		
Academic Performance	2013	2014	2015	2016	2017	Trend
Average exam mark	65.6	64.4	64.9	65.3	66.6	—
Percentage of exams failed	14.3	17.4	15.3	13.9	13.0	—
School vs exam mark difference	4.8	6.3	5.0	4.8	5.3	—
Language Arts gender gap	n/a	n/a	n/a	M 2.7	F 0.4	n/a
Math gender gap	n/a	n/a	n/a	F 4.7	M 0.3	n/a
Courses taken per student	n/a	n/a	n/a	3.7	3.8	n/a
Diploma completion rate	83.3	84.0	87.8	81.3	86.2	—
Delayed advancement rate	18.8	17.8	31.3	21.0	18.3	—
Overall rating out of 10	6.7	6.4	6.6	6.7	7.2	—

Braemar [Public] Edmonton		Gr 12 Enrollment: 109				
ESL (%): n/a	Special needs (%): 8.1	Alt. French (%): 0.0				
Actual rating vs predicted based		2016-17		Last 5 Years		
on parents' avg. inc. of \$ n/a: n/a		Rank:	259/262	222/225		
Academic Performance	2013	2014	2015	2016	2017	Trend
Average exam mark	57.0	53.9	55.8	59.0	54.5	—
Percentage of exams failed	28.6	39.7	38.0	32.5	40.3	—
School vs exam mark difference	10.4	13.8	11.6	10.1	15.6	—
Language Arts gender gap	n/a	n/a	n/a	n/a	n/a	n/a
Math gender gap	n/a	n/a	n/a	n/a	n/a	n/a
Courses taken per student	n/a	n/a	n/a	0.8	0.3	n/a
Diploma completion rate	15.5	20.5	14.5	20.6	17.1	—
Delayed advancement rate	85.2	n/a	n/a	n/a	n/a	n/a
Overall rating out of 10	0.4	0.0	0.2	0.2	0.0	—

Eastglen [Public] Edmonton		Gr 12 Enrollment: 301				
ESL (%): 22.3	Special needs (%): 13.1	Alt. French (%): 0.0				
Actual rating vs predicted based		2016-17		Last 5 Years		
on parents' avg. inc. of \$ n/a: n/a		Rank:	252/262	222/225		
Academic Performance	2013	2014	2015	2016	2017	Trend
Average exam mark	53.8	57.9	56.5	55.4	57.1	—
Percentage of exams failed	38.8	27.1	34.3	35.3	30.5	—
School vs exam mark difference	8.4	8.5	9.3	10.9	6.7	—
Language Arts gender gap	n/a	n/a	n/a	F 0.5	M 3.0	n/a
Math gender gap	n/a	n/a	n/a	M 4.4	F 7.2	n/a
Courses taken per student	n/a	n/a	n/a	2.1	2.3	n/a
Diploma completion rate	35.4	55.0	45.1	52.4	40.6	—
Delayed advancement rate	67.4	55.3	63.7	53.9	64.2	—
Overall rating out of 10	1.0	3.2	2.0	2.2	2.5	—

Edmonton Christian [Public] Edmonton		Gr 12 Enrollment: 103				
ESL (%): 12.1	Special needs (%): 8.3	Alt. French (%): n/a				
Actual rating vs predicted based		2016-17		Last 5 Years		
on parents' avg. inc. of \$ n/a: n/a		Rank:	65/262	92/225		
Academic Performance	2013	2014	2015	2016	2017	Trend
Average exam mark	67.5	65.1	60.9	64.0	66.0	—
Percentage of exams failed	11.3	19.4	26.2	19.9	19.1	—
School vs exam mark difference	8.1	8.7	10.0	10.4	8.5	—
Language Arts gender gap	n/a	n/a	n/a	F 4.8	F 3.5	n/a
Math gender gap	n/a	n/a	n/a	F 13.3	M 2.0	n/a
Courses taken per student	n/a	n/a	n/a	4.4	4.3	n/a
Diploma completion rate	92.4	84.9	90.1	97.1	92.2	—
Delayed advancement rate	7.5	14.6	9.2	0.3	4.4	—
Overall rating out of 10	7.2	6.2	5.5	6.7	7.1	—

Edmonton Islamic [Private] Edmonton		Gr 12 Enrollment: 23				
ESL (%): 32.2	Special needs (%): 14.4	Alt. French (%): 0.0				
Actual rating vs predicted based		2016-17		Last 5 Years		
on parents' avg. inc. of \$ n/a: n/a		Rank:	49/262	n/a		
Academic Performance	2013	2014	2015	2016	2017	Trend
Average exam mark	n/a	68.2	71.2	66.1	73.2	n/a
Percentage of exams failed	n/a	14.6	9.2	22.5	9.6	n/a
School vs exam mark difference	n/a	11.4	9.0	12.4	7.7	n/a
Language Arts gender gap	n/a	n/a	n/a	F 2.3	F 6.7	n/a
Math gender gap	n/a	n/a	n/a	F 4.8	M 18.0	n/a
Courses taken per student	n/a	n/a	n/a	5.0	4.7	n/a
Diploma completion rate	n/a	80.0	54.5	66.7	82.6	n/a
Delayed advancement rate	n/a	19.9	44.8	31.3	15.1	n/a
Overall rating out of 10	n/a	6.4	5.6	6.1	7.3	n/a

Harry Ainlay [Public] Edmonton		Gr 12 Enrollment: 855				
ESL (%): 22.1	Special needs (%): 4.8	Alt. French (%): n/a				
Actual rating vs predicted based		2016-17		Last 5 Years		
on parents' avg. inc. of \$ n/a: n/a		Rank:	30/262	35/225		
Academic Performance	2013	2014	2015	2016	2017	Trend
Average exam mark	71.6	70.4	70.3	71.3	71.4	—
Percentage of exams failed	9.1	11.4	11.6	10.4	10.2	—
School vs exam mark difference	3.1	4.6	4.7	5.4	4.7	—
Language Arts gender gap	n/a	n/a	n/a	F 1.7	F 1.8	n/a
Math gender gap	n/a	n/a	n/a	M 1.7	M 2.8	n/a
Courses taken per student	n/a	n/a	n/a	4.7	4.5	n/a
Diploma completion rate	79.2	80.9	79.0	83.2	80.0	—
Delayed advancement rate	20.4	21.4	22.9	17.7	18.2	—
Overall rating out of 10	7.6	7.3	7.0	8.1	7.9	—

Headway [Private] Edmonton		Gr 12 Enrollment: 14				
ESL (%): 48.4	Special needs (%): 0.0	Alt. French (%): 0.0				
Actual rating vs predicted based		2016-17		Last 5 Years		
on parents' avg. inc. of \$ n/a: n/a		Rank:	198/262	179/225		
Academic Performance	2013	2014	2015	2016	2017	Trend
Average exam mark	61.3	59.0	60.9	54.5	54.2	▼
Percentage of exams failed	24.2	36.8	30.5	39.2	50.5	▼
School vs exam mark difference	14.0	12.7	7.6	14.3	18.9	—
Language Arts gender gap	n/a	n/a	n/a	M 3.7	n/a	n/a
Math gender gap	n/a	n/a	n/a	M 3.4	n/a	n/a
Courses taken per student	n/a	n/a	n/a	6.9	7.7	n/a
Diploma completion rate	92.3	100.0	100.0	95.0	100.0	—
Delayed advancement rate	17.1	15.4	7.0	n/a	0.0	n/a
Overall rating out of 10	4.7	4.4	5.5	5.7	5.1	—

Holy Trinity [Separate] Edmonton		Gr 12 Enrollment: 350				
ESL (%): 30.6	Special needs (%): 7.8	Alt. French (%): 0.0				
Actual rating vs predicted based		2016-17		Last 5 Years		
on parents' avg. inc. of \$ n/a: n/a		Rank:	112/262	102/225		
Academic Performance	2013	2014	2015	2016	2017	Trend
Average exam mark	64.8	65.4	64.4	63.7	65.2	—
Percentage of exams failed	16.1	15.5	17.7	19.3	18.0	▼
School vs exam mark difference	5.7	5.4	6.1	6.9	6.9	—
Language Arts gender gap	n/a	n/a	n/a	M 0.4	M 2.4	n/a
Math gender gap	n/a	n/a	n/a	F 3.3	M 2.8	n/a
Courses taken per student	n/a	n/a	n/a	3.9	3.7	n/a
Diploma completion rate	85.5	84.8	84.7	80.4	80.5	▼
Delayed advancement rate	14.5	19.2	15.9	20.5	22.0	▼
Overall rating out of 10	6.5	6.6	6.4	6.4	6.3	▼

J H Picard [Separate] Edmonton		Gr 12 Enrollment: 86				
ESL (%): 6.6	Special needs (%): 7.3	Alt. French (%): n/a				
Actual rating vs predicted based		2016-17		Last 5 Years		
on parents' avg. inc. of \$ n/a: n/a		Rank:	242/262	219/225		
Academic Performance	2013	2014	2015	2016	2017	Trend
Average exam mark	68.1	67.1	69.7	65.4	68.1	—
Percentage of exams failed	9.6	11.6	9.1	12.8	10.4	—
School vs exam mark difference	7.4	8.3	8.9	11.2	9.4	—
Language Arts gender gap	n/a	n/a	n/a	M 4.8	E n/a	n/a
Math gender gap	n/a	n/a	n/a	F 1.5	F 0.8	n/a
Courses taken per student	n/a	n/a	n/a	5.0	5.1	n/a
Diploma completion rate	96.0	100.0	97.1	96.9	98.8	—
Delayed advancement rate	2.5	0.0	2.1	1.3	13.7	—
Overall rating out of 10	7.6	7.4	7.6	7.6	8.2	—

J Percy Page [Public] Edmonton		Gr 12 Enrollment: 396				
ESL (%): 29.5	Special needs (%): 12.2	Alt. French (%): 0.0				
Actual rating vs predicted based		2016-17		Last 5 Years		
on parents' avg. inc. of \$ n/a: n/a		Rank:	242/262	219/225		
Academic Performance	2013	2014	2015	2016	2017	Trend
Average exam mark	58.2	57.0	58.4	58.6	59.9	—
Percentage of exams failed	33.6	33.1	32.4	30.5	29.1	▲
School vs exam mark difference	9.0	9.5	9.3	9.1	8.8	▲
Language Arts gender gap	n/a	n/a	n/a	M 0.6	F 0.7	n/a
Math gender gap	n/a	n/a	n/a	M 3.4	F 0.1	n/a
Courses taken per student	n/a	n/a	n/a	2.7	2.7	n/a
Diploma completion rate	43.5	51.8	48.7	56.3	54.2	—
Delayed advancement rate	57.7	55.8	51.9	49.0	49.8	▲
Overall rating out of 10	2.3	2.7	2.7	3.5	3.6	▲

Mother Margaret Mary [Separate] Edmonton Gr 12 Enrollment: 130	
ESL (%): 8.7	Special needs (%): 6.9
Actual rating vs predicted based on parents' avg. inc. of \$ n/a: n/a	
Rank: 49/262	
Academic Performance	Trend
Average exam mark	▲
Percentage of exams failed	▲
School vs exam mark difference	—
Language Arts gender gap	n/a
Math gender gap	n/a
Courses taken per student	▲
Diploma completion rate	▲
Delayed advancement rate	▲
Overall rating out of 10	6.9 7.6 7.3 n/a

Strathcona [Public] Edmonton Gr 12 Enrollment: 524	
ESL (%): 8.0	Special needs (%): 5.6
Actual rating vs predicted based on parents' avg. inc. of \$ n/a: n/a	
Rank: 204/262	
Academic Performance	Trend
Average exam mark	▲
Percentage of exams failed	▲
School vs exam mark difference	▲
Language Arts gender gap	n/a
Math gender gap	n/a
Courses taken per student	▲
Diploma completion rate	▲
Delayed advancement rate	▲
Overall rating out of 10	7.3 7.3 7.6 8.1 8.2 ▲

Mayerthorpe [Public] Mayerthorpe Gr 12 Enrollment: 46	
ESL (%): 0.0	Special needs (%): 13.2
Actual rating vs predicted based on parents' avg. inc. of \$ n/a: n/a	
Rank: 112/262	
Academic Performance	Trend
Average exam mark	▲
Percentage of exams failed	▲
School vs exam mark difference	—
Language Arts gender gap	n/a
Math gender gap	n/a
Courses taken per student	▲
Diploma completion rate	▲
Delayed advancement rate	—
Overall rating out of 10	4.9 6.0 5.1 5.9 6.3 —

Old Scona [Public] Edmonton Gr 12 Enrollment: 98	
ESL (%): 5.1	Special needs (%): 0.0
Actual rating vs predicted based on parents' avg. inc. of \$ n/a: n/a	
Rank: 1/262	
Academic Performance	Trend
Average exam mark	—
Percentage of exams failed	—
School vs exam mark difference	—
Language Arts gender gap	n/a
Math gender gap	n/a
Courses taken per student	▲
Diploma completion rate	▲
Delayed advancement rate	▲
Overall rating out of 10	10.0 10.0 10.0 10.0 10.0 —

Victoria [Public] Edmonton Gr 12 Enrollment: 267	
ESL (%): 7.5	Special needs (%): 6.7
Actual rating vs predicted based on parents' avg. inc. of \$ n/a: n/a	
Rank: 204/262	
Academic Performance	Trend
Average exam mark	—
Percentage of exams failed	—
School vs exam mark difference	—
Language Arts gender gap	n/a
Math gender gap	n/a
Courses taken per student	▲
Diploma completion rate	—
Delayed advancement rate	—
Overall rating out of 10	4.7 5.6 4.3 5.5 5.0 —

Parkland [Public] Edson Gr 12 Enrollment: 117	
ESL (%): 0.0	Special needs (%): 8.5
Actual rating vs predicted based on parents' avg. inc. of \$ n/a: n/a	
Rank: 161/262	
Academic Performance	Trend
Average exam mark	—
Percentage of exams failed	—
School vs exam mark difference	—
Language Arts gender gap	n/a
Math gender gap	n/a
Courses taken per student	▲
Diploma completion rate	▲
Delayed advancement rate	—
Overall rating out of 10	6.1 6.2 5.8 5.6 5.6 ▼

Parkland Immanuel (Private) Edmonton Gr 12 Enrollment: 19	
ESL (%): n/a	Special needs (%): 10.3
Actual rating vs predicted based on parents' avg. inc. of \$ n/a: n/a	
Rank: 77/262	
Academic Performance	Trend
Average exam mark	n/a
Percentage of exams failed	n/a
School vs exam mark difference	n/a
Language Arts gender gap	n/a
Math gender gap	n/a
Courses taken per student	n/a
Diploma completion rate	n/a
Delayed advancement rate	n/a
Overall rating out of 10	6.8 6.9 n/a 7.8 6.8 n/a

Vimy Ridge [Public] Edmonton Gr 12 Enrollment: 82	
ESL (%): 2.2	Special needs (%): 3.9
Actual rating vs predicted based on parents' avg. inc. of \$ n/a: n/a	
Rank: 99/262	
Academic Performance	Trend
Average exam mark	—
Percentage of exams failed	—
School vs exam mark difference	—
Language Arts gender gap	n/a
Math gender gap	n/a
Courses taken per student	▲
Diploma completion rate	—
Delayed advancement rate	—
Overall rating out of 10	7.0 6.9 6.6 6.8 6.5 ▼

St. Joseph (Separate) Whitecourt Gr 12 Enrollment: 70	
ESL (%): 17.9	Special needs (%): 8.1
Actual rating vs predicted based on parents' avg. inc. of \$ n/a: n/a	
Rank: 235/262	
Academic Performance	Trend
Average exam mark	—
Percentage of exams failed	—
School vs exam mark difference	—
Language Arts gender gap	n/a
Math gender gap	n/a
Courses taken per student	▲
Diploma completion rate	—
Delayed advancement rate	—
Overall rating out of 10	6.3 7.1 5.9 4.4 4.2 ▼

Queen Elizabeth [Public] Edmonton Gr 12 Enrollment: 482	
ESL (%): 35.1	Special needs (%): 12.1
Actual rating vs predicted based on parents' avg. inc. of \$ n/a: n/a	
Rank: 99/262	
Academic Performance	Trend
Average exam mark	—
Percentage of exams failed	—
School vs exam mark difference	—
Language Arts gender gap	n/a
Math gender gap	n/a
Courses taken per student	▲
Diploma completion rate	—
Delayed advancement rate	—
Overall rating out of 10	3.2 3.1 2.1 3.1 2.9 —

W P Wagner [Public] Edmonton Gr 12 Enrollment: 448	
ESL (%): 21.0	Special needs (%): 7.2
Actual rating vs predicted based on parents' avg. inc. of \$ n/a: n/a	
Rank: 99/262	
Academic Performance	Trend
Average exam mark	—
Percentage of exams failed	—
School vs exam mark difference	—
Language Arts gender gap	n/a
Math gender gap	n/a
Courses taken per student	▲
Diploma completion rate	—
Delayed advancement rate	—
Overall rating out of 10	6.3 6.5 6.0 6.8 7.0 —

FORT MACLEOD AREA

F. P. Walsh [Public] Fort Macleod Gr 12 Enrollment: 38	
ESL (%): 8.1	Special needs (%): 9.5
Actual rating vs predicted based on parents' avg. inc. of \$ n/a: n/a	
Rank: 56/262	
Academic Performance	Trend
Average exam mark	—
Percentage of exams failed	—
School vs exam mark difference	—
Language Arts gender gap	n/a
Math gender gap	n/a
Courses taken per student	▲
Diploma completion rate	—
Delayed advancement rate	—
Overall rating out of 10	6.6 6.4 5.8 5.8 7.2 —

EDSON/WHITECOURT AREA

Hilltop [Public] Whitecourt Gr 12 Enrollment: 114	
ESL (%): 3.2	Special needs (%): 8.4
Actual rating vs predicted based on parents' avg. inc. of \$ n/a: n/a	
Rank: 192/262	
Academic Performance	Trend
Average exam mark	—
Percentage of exams failed	—
School vs exam mark difference	—
Language Arts gender gap	n/a
Math gender gap	n/a
Courses taken per student	▲
Diploma completion rate	—
Delayed advancement rate	—
Overall rating out of 10	5.5 5.7 5.5 6.2 5.2 —

Matthew Halton [Public] Pincher Creek Gr 12 Enrollment: 45	
ESL (%): n/a	Special needs (%): 11.5
Actual rating vs predicted based on parents' avg. inc. of \$ n/a: n/a	
Rank: 222/262	
Academic Performance	Trend
Average exam mark	—
Percentage of exams failed	—
School vs exam mark difference	—
Language Arts gender gap	n/a
Math gender gap	n/a
Courses taken per student	▲
Diploma completion rate	—
Delayed advancement rate	—
Overall rating out of 10	6.8 5.1 7.3 6.1 4.6 —

St. Francis Xavier (Separate) Edmonton Gr 12 Enrollment: 407	
ESL (%): 16.4	Special needs (%): 5.8
Actual rating vs predicted based on parents' avg. inc. of \$ n/a: n/a	
Rank: 69/262	
Academic Performance	Trend
Average exam mark	—
Percentage of exams failed	—
School vs exam mark difference	—
Language Arts gender gap	n/a
Math gender gap	n/a
Courses taken per student	▲
Diploma completion rate	—
Delayed advancement rate	—
Overall rating out of 10	6.7 6.4 6.7 6.7 7.0 —

Holy Redeemer (Separate) Edson Gr 12 Enrollment: 65	
ESL (%): 7.8	Special needs (%): 8.6
Actual rating vs predicted based on parents' avg. inc. of \$ n/a: n/a	
Rank: 192/262	
Academic Performance	Trend
Average exam mark	—
Percentage of exams failed	—
School vs exam mark difference	—
Language Arts gender gap	n/a
Math gender gap	n/a
Courses taken per student	▲
Diploma completion rate	—
Delayed advancement rate	—
Overall rating out of 10	6.7 6.2 6.2 6.4 6.1 —

St. Michael's (Separate) Pincher Creek Gr 12 Enrollment: 23	
ESL (%): 3.2	Special needs (%): 24.5
Actual rating vs predicted based on parents' avg. inc. of \$ n/a: n/a	
Rank: 226/262	
Academic Performance	Trend
Average exam mark	—
Percentage of exams failed	—
School vs exam mark difference	—
Language Arts gender gap	n/a
Math gender gap	n/a
Courses taken per student	▲
Diploma completion rate	—
Delayed advancement rate	—
Overall rating out of 10	6.2 5.8 5.0 n/a 4.5 n/a

FORT MCMURRAY AREA

Table for Father Patrick Mercredi [Separate] Fort McMurray. Includes columns for Academic Performance (2013-2017), Trend, and Overall rating out of 10. Data points include average exam mark (63.1), percentage of exams failed (18.5), and overall rating (6.2).

Table for E.W Pratt [Public] High Prairie. Includes columns for Academic Performance (2013-2017), Trend, and Overall rating out of 10. Data points include average exam mark (58.3), percentage of exams failed (28.2), and overall rating (2.9).

Table for St. John Bosco [Separate] Grande Prairie. Includes columns for Academic Performance (2013-2017), Trend, and Overall rating out of 10. Data points include average exam mark (n/a), percentage of exams failed (n/a), and overall rating (n/a).

Table for Fort McMurray [Public] Fort McMurray. Includes columns for Academic Performance (2013-2017), Trend, and Overall rating out of 10. Data points include average exam mark (59.3), percentage of exams failed (24.5), and overall rating (4.5).

Table for Grande Prairie [Public] Grande Prairie. Includes columns for Academic Performance (2013-2017), Trend, and Overall rating out of 10. Data points include average exam mark (58.7), percentage of exams failed (27.3), and overall rating (4.1).

Table for St. Joseph [Separate] Grande Prairie. Includes columns for Academic Performance (2013-2017), Trend, and Overall rating out of 10. Data points include average exam mark (61.1), percentage of exams failed (23.6), and overall rating (4.5).

Table for Holy Trinity [Separate] Fort McMurray. Includes columns for Academic Performance (2013-2017), Trend, and Overall rating out of 10. Data points include average exam mark (62.5), percentage of exams failed (21.8), and overall rating (5.2).

Table for Hillside [Public] Valleyview. Includes columns for Academic Performance (2013-2017), Trend, and Overall rating out of 10. Data points include average exam mark (58.6), percentage of exams failed (28.3), and overall rating (4.2).

Table for High Level [Public] High Level. Includes columns for Academic Performance (2013-2017), Trend, and Overall rating out of 10. Data points include average exam mark (58.0), percentage of exams failed (29.3), and overall rating (3.2).

Table for Westwood [Public] Fort McMurray. Includes columns for Academic Performance (2013-2017), Trend, and Overall rating out of 10. Data points include average exam mark (65.0), percentage of exams failed (19.3), and overall rating (6.3).

Table for Peace Wapiti Academy [Public] Grande Prairie. Includes columns for Academic Performance (2013-2017), Trend, and Overall rating out of 10. Data points include average exam mark (59.7), percentage of exams failed (25.7), and overall rating (4.3).

Table for La Crete [Public] La Crete. Includes columns for Academic Performance (2013-2017), Trend, and Overall rating out of 10. Data points include average exam mark (63.3), percentage of exams failed (15.9), and overall rating (6.1).

GRANDE PRAIRIE AREA

Table for Beaverlodge [Public] Beaverlodge. Includes columns for Academic Performance (2013-2017), Trend, and Overall rating out of 10. Data points include average exam mark (62.8), percentage of exams failed (19.0), and overall rating (5.4).

Table for Sexsmith [Public] Sexsmith. Includes columns for Academic Performance (2013-2017), Trend, and Overall rating out of 10. Data points include average exam mark (62.5), percentage of exams failed (22.4), and overall rating (5.2).

Table for Paul Rowe [Public] Manning. Includes columns for Academic Performance (2013-2017), Trend, and Overall rating out of 10. Data points include average exam mark (62.2), percentage of exams failed (18.9), and overall rating (5.5).

Table for Charles Spencer [Public] Grande Prairie. Includes columns for Academic Performance (2013-2017), Trend, and Overall rating out of 10. Data points include average exam mark (n/a), percentage of exams failed (n/a), and overall rating (n/a).

Table for Spirit River [Public] Spirit River. Includes columns for Academic Performance (2013-2017), Trend, and Overall rating out of 10. Data points include average exam mark (57.5), percentage of exams failed (29.1), and overall rating (3.7).

Table for County Central [Public] Vulcan. Includes columns for Academic Performance (2013-2017), Trend, and Overall rating out of 10. Data points include average exam mark (64.0), percentage of exams failed (20.0), and overall rating (6.1).

Highwood [Public] High River Gr 12 Enrollment: 122
ESL (%): 10.2 Special needs (%): 15.2 Alt. French (%): 9.6
Academic Performance 2013 2014 2015 2016 2017 Trend

LACOMBE/PONOKA AREA
Central Alberta Christian [Private] Lacombe Gr 12 Enrollment: 30
ESL (%): 0.0 Special needs (%): n/a Alt. French (%): 0.0
Academic Performance 2013 2014 2015 2016 2017 Trend

LEDUC AREA
Beaumont [Public] Beaumont Gr 12 Enrollment: 255
ESL (%): 2.8 Special needs (%): 11.0 Alt. French (%): 21.8
Academic Performance 2013 2014 2015 2016 2017 Trend

J. T. Foster [Public] Nanton Gr 12 Enrollment: 28
ESL (%): 6.4 Special needs (%): 10.9 Alt. French (%): 0.0
Academic Performance 2013 2014 2015 2016 2017 Trend

Lacombe [Public] Lacombe Gr 12 Enrollment: 260
ESL (%): 6.4 Special needs (%): 11.1 Alt. French (%): n/a
Academic Performance 2013 2014 2015 2016 2017 Trend

Calmar [Public] Calmar Gr 12 Enrollment: 39
ESL (%): 0.0 Special needs (%): 5.8 Alt. French (%): 0.0
Academic Performance 2013 2014 2015 2016 2017 Trend

Notre Dame Collegiate [Separate] High River Gr 12 Enrollment: 72
ESL (%): 37.4 Special needs (%): 9.9 Alt. French (%): 0.0
Academic Performance 2013 2014 2015 2016 2017 Trend

Parkview Adventist [Private] Lacombe Gr 12 Enrollment: 33
ESL (%): n/a Special needs (%): 0.0 Alt. French (%): 0.0
Academic Performance 2013 2014 2015 2016 2017 Trend

Christ The King [Separate] Leduc Gr 12 Enrollment: 52
ESL (%): 9.5 Special needs (%): 7.5 Alt. French (%): 0.0
Academic Performance 2013 2014 2015 2016 2017 Trend

JASPER/HINTON AREA
Grande Cache [Public] Grande Cache Gr 12 Enrollment: 41
ESL (%): 2.8 Special needs (%): 4.0 Alt. French (%): 0.0
Academic Performance 2013 2014 2015 2016 2017 Trend

Ponoka [Public] Ponoka Gr 12 Enrollment: 115
ESL (%): 1.8 Special needs (%): 12.8 Alt. French (%): 0.0
Academic Performance 2013 2014 2015 2016 2017 Trend

John Maland [Public] Devon Gr 12 Enrollment: 115
ESL (%): 1.9 Special needs (%): 11.3 Alt. French (%): 0.0
Academic Performance 2013 2014 2015 2016 2017 Trend

Harry Collinge [Public] Hinton Gr 12 Enrollment: 68
ESL (%): 2.1 Special needs (%): 9.2 Alt. French (%): 11.8
Academic Performance 2013 2014 2015 2016 2017 Trend

Rimby [Public] Rimby Gr 12 Enrollment: 47
ESL (%): 4.4 Special needs (%): 7.0 Alt. French (%): 0.0
Academic Performance 2013 2014 2015 2016 2017 Trend

Leduc [Public] Leduc Gr 12 Enrollment: 328
ESL (%): 2.6 Special needs (%): 14.2 Alt. French (%): 5.6
Academic Performance 2013 2014 2015 2016 2017 Trend

Jasper [Public] Jasper Gr 12 Enrollment: 40
ESL (%): 20.7 Special needs (%): 10.3 Alt. French (%): 39.0
Academic Performance 2013 2014 2015 2016 2017 Trend

St. Augustine [Separate] Ponoka Gr 12 Enrollment: 25
ESL (%): 15.7 Special needs (%): 13.5 Alt. French (%): 0.0
Academic Performance 2013 2014 2015 2016 2017 Trend

LETHBRIDGE AREA
Calvin Christian [Private] Coalhurst Gr 12 Enrollment: 54
ESL (%): 2.7 Special needs (%): 9.8 Alt. French (%): n/a
Academic Performance 2013 2014 2015 2016 2017 Trend

Cardston [Public] Cardston		Gr 12 Enrollment: 117				
ESL (%): 0.0	Special needs (%): 14.3	Alt. French (%): 0.0				
Actual rating vs predicted based on parents' avg. inc. of \$ n/a: n/a		Rank: 215/262		2016-17 Last 5 Years 198/225		
Academic Performance	2013	2014	2015	2016	2017	Trend
Average exam mark	60.8	61.6	61.4	60.1	60.7	—
Percentage of exams failed	24.7	24.2	22.4	25.7	27.2	—
School vs exam mark difference	13.5	10.1	10.2	12.1	12.8	—
Language Arts gender gap	n/a	n/a	n/a	F 7.1	F 4.3	n/a
Math gender gap	n/a	n/a	n/a	F 13.8	M 0.3	n/a
Courses taken per student	n/a	n/a	n/a	3.4	3.3	n/a
Diploma completion rate	79.2	83.7	81.3	81.7	81.8	—
Delayed advancement rate	24.7	20.7	20.6	18.4	24.1	—
Overall rating out of 10	4.2	5.1	5.1	4.5	4.7	—

Catholic Central [Separate] Lethbridge		Gr 12 Enrollment: 268				
ESL (%): 15.1	Special needs (%): 22.9	Alt. French (%): 7.0				
Actual rating vs predicted based on parents' avg. inc. of \$ n/a: n/a		Rank: 178/262		2016-17 Last 5 Years 125/225		
Academic Performance	2013	2014	2015	2016	2017	Trend
Average exam mark	67.6	64.7	65.0	62.9	61.6	▼
Percentage of exams failed	12.1	16.7	15.7	20.0	24.8	▼
School vs exam mark difference	7.9	9.3	10.6	13.7	14.3	▼
Language Arts gender gap	n/a	n/a	n/a	F 1.8	F 0.5	n/a
Math gender gap	n/a	n/a	n/a	M 0.1	F 2.5	n/a
Courses taken per student	n/a	n/a	n/a	3.7	3.7	n/a
Diploma completion rate	91.0	87.3	81.9	91.7	87.6	—
Delayed advancement rate	11.6	18.6	18.8	16.7	15.5	—
Overall rating out of 10	7.1	6.3	5.9	6.0	5.4	▼

Chinook [Public] Lethbridge		Gr 12 Enrollment: 261				
ESL (%): 5.3	Special needs (%): 17.4	Alt. French (%): n/a				
Actual rating vs predicted based on parents' avg. inc. of \$ n/a: n/a		Rank: 198/262		2016-17 Last 5 Years 159/225		
Academic Performance	2013	2014	2015	2016	2017	Trend
Average exam mark	63.7	63.1	65.2	62.5	62.4	—
Percentage of exams failed	20.9	20.0	16.6	20.8	20.8	—
School vs exam mark difference	7.2	8.3	8.2	10.1	10.2	▼
Language Arts gender gap	n/a	n/a	n/a	M 0.1	F 1.7	n/a
Math gender gap	n/a	n/a	n/a	F 7.4	F 2.8	n/a
Courses taken per student	n/a	n/a	n/a	3.5	3.2	n/a
Diploma completion rate	81.1	76.5	78.5	76.5	75.2	▼
Delayed advancement rate	21.9	23.5	24.6	34.6	32.5	—
Overall rating out of 10	5.7	5.5	5.9	5.3	5.1	—

Immanuel Christian [Public] Lethbridge		Gr 12 Enrollment: 43				
ESL (%): 5.0	Special needs (%): 9.6	Alt. French (%): n/a				
Actual rating vs predicted based on parents' avg. inc. of \$ n/a: n/a		Rank: 40/262		2016-17 Last 5 Years 24/225		
Academic Performance	2013	2014	2015	2016	2017	Trend
Average exam mark	72.7	73.8	68.1	67.0	73.1	—
Percentage of exams failed	8.6	5.0	8.9	12.8	5.5	—
School vs exam mark difference	9.3	4.9	9.9	9.2	6.1	—
Language Arts gender gap	n/a	n/a	n/a	n/a	F 5.9	n/a
Math gender gap	n/a	n/a	n/a	n/a	M 8.4	n/a
Courses taken per student	n/a	n/a	n/a	4.0	3.8	n/a
Diploma completion rate	100.0	89.5	95.6	96.3	83.3	—
Delayed advancement rate	0.0	8.1	5.8	6.8	17.8	▼
Overall rating out of 10	8.1	8.5	7.3	7.4	7.5	—

Kate Andrews [Public] Coaldale		Gr 12 Enrollment: 54				
ESL (%): 2.9	Special needs (%): 17.5	Alt. French (%): 0.0				
Actual rating vs predicted based on parents' avg. inc. of \$ n/a: n/a		Rank: 124/262		2016-17 Last 5 Years 92/225		
Academic Performance	2013	2014	2015	2016	2017	Trend
Average exam mark	66.7	67.6	68.0	64.7	66.4	—
Percentage of exams failed	13.3	11.2	8.8	15.9	12.6	—
School vs exam mark difference	7.8	7.4	8.7	11.0	10.2	—
Language Arts gender gap	n/a	n/a	n/a	F 8.4	M 1.6	n/a
Math gender gap	n/a	n/a	n/a	F 3.6	F 9.7	n/a
Courses taken per student	n/a	n/a	n/a	3.5	3.3	n/a
Diploma completion rate	85.2	89.9	84.9	87.1	86.3	—
Delayed advancement rate	13.6	13.0	17.4	27.2	23.7	▼
Overall rating out of 10	6.7	7.2	6.9	5.7	6.2	—

Lethbridge Collegiate [Public] Lethbridge		Gr 12 Enrollment: 190				
ESL (%): 4.3	Special needs (%): 16.2	Alt. French (%): 19.9				
Actual rating vs predicted based on parents' avg. inc. of \$ n/a: n/a		Rank: 139/262		2016-17 Last 5 Years 151/225		
Academic Performance	2013	2014	2015	2016	2017	Trend
Average exam mark	65.1	65.8	63.8	63.8	66.6	—
Percentage of exams failed	17.3	14.3	17.9	18.9	14.0	—
School vs exam mark difference	8.2	7.7	9.1	9.3	8.1	—
Language Arts gender gap	n/a	n/a	n/a	M 3.8	F 3.4	n/a
Math gender gap	n/a	n/a	n/a	M 8.1	M 3.5	n/a
Courses taken per student	n/a	n/a	n/a	3.2	3.2	n/a
Diploma completion rate	72.5	75.5	71.9	76.6	75.3	—
Delayed advancement rate	31.9	31.7	30.1	31.1	33.8	—
Overall rating out of 10	5.7	6.1	5.3	5.4	6.0	—

Maerath [Public] Magrath		Gr 12 Enrollment: 42				
ESL (%): 0.0	Special needs (%): 9.5	Alt. French (%): 0.0				
Actual rating vs predicted based on parents' avg. inc. of \$ n/a: n/a		Rank: 99/262		2016-17 Last 5 Years 45/225		
Academic Performance	2013	2014	2015	2016	2017	Trend
Average exam mark	68.7	67.6	68.2	67.2	64.8	▼
Percentage of exams failed	8.4	10.6	12.3	11.1	13.8	—
School vs exam mark difference	9.2	9.4	8.8	10.0	10.6	—
Language Arts gender gap	n/a	n/a	n/a	F 1.2	F 2.0	n/a
Math gender gap	n/a	n/a	n/a	M 11.5	F 19.0	n/a
Courses taken per student	n/a	n/a	n/a	3.8	3.9	n/a
Diploma completion rate	97.4	95.7	100.0	96.3	92.9	—
Delayed advancement rate	3.3	2.2	0.0	2.5	10.0	—
Overall rating out of 10	7.7	7.4	7.5	7.3	6.5	▼

Raymond [Public] Raymond		Gr 12 Enrollment: 79				
ESL (%): n/a	Special needs (%): 7.0	Alt. French (%): 0.0				
Actual rating vs predicted based on parents' avg. inc. of \$ n/a: n/a		Rank: 77/262		2016-17 Last 5 Years 105/225		
Academic Performance	2013	2014	2015	2016	2017	Trend
Average exam mark	63.6	64.8	63.6	65.5	66.5	▲
Percentage of exams failed	18.3	16.2	16.3	14.3	16.8	—
School vs exam mark difference	12.5	12.1	10.3	10.1	10.8	▲
Language Arts gender gap	n/a	n/a	n/a	M 1.1	F 1.1	n/a
Math gender gap	n/a	n/a	n/a	F 4.6	F 5.9	n/a
Courses taken per student	n/a	n/a	n/a	3.6	3.7	n/a
Diploma completion rate	88.8	96.9	82.8	86.8	93.7	—
Delayed advancement rate	10.7	2.1	15.2	13.4	5.0	—
Overall rating out of 10	5.7	6.5	6.0	6.7	6.8	▲

Winston Churchill [Public] Lethbridge		Gr 12 Enrollment: 198				
ESL (%): 15.0	Special needs (%): 19.9	Alt. French (%): 0.0				
Actual rating vs predicted based on parents' avg. inc. of \$ n/a: n/a		Rank: 242/262		2016-17 Last 5 Years 172/225		
Academic Performance	2013	2014	2015	2016	2017	Trend
Average exam mark	67.1	64.3	65.5	62.8	59.9	▼
Percentage of exams failed	11.6	13.5	13.5	18.0	24.6	▼
School vs exam mark difference	3.9	6.8	6.1	8.0	10.7	▼
Language Arts gender gap	n/a	n/a	n/a	F 7.0	M 4.6	n/a
Math gender gap	n/a	n/a	n/a	M 0.3	F 7.9	n/a
Courses taken per student	n/a	n/a	n/a	2.7	2.7	n/a
Diploma completion rate	71.9	64.3	67.6	71.6	67.8	—
Delayed advancement rate	34.9	39.7	35.4	39.1	42.9	▼
Overall rating out of 10	6.4	5.5	5.8	4.9	3.6	▼

OKOTOKS AREA

Foothills [Public] Okotoks		Gr 12 Enrollment: 319				
ESL (%): 3.0	Special needs (%): 17.0	Alt. French (%): 7.9				
Actual rating vs predicted based on parents' avg. inc. of \$ n/a: n/a		Rank: 287/262		2016-17 Last 5 Years 73/225		
Academic Performance	2013	2014	2015	2016	2017	Trend
Average exam mark	66.1	64.7	65.4	64.1	64.8	—
Percentage of exams failed	13.8	15.0	13.9	14.5	14.7	—
School vs exam mark difference	4.6	4.8	6.4	7.4	7.8	▼
Language Arts gender gap	n/a	n/a	n/a	F 2.9	F 0.8	n/a
Math gender gap	n/a	n/a	n/a	M 0.8	M 0.3	n/a
Courses taken per student	n/a	n/a	n/a	3.3	3.5	n/a
Diploma completion rate	87.5	87.3	87.6	85.3	88.5	—
Delayed advancement rate	17.3	14.8	14.3	20.1	16.4	—
Overall rating out of 10	7.1	6.8	6.8	6.3	6.7	—

Holy Trinity Academy [Separate] Okotoks		Gr 12 Enrollment: 302				
ESL (%): 4.4	Special needs (%): 13.5	Alt. French (%): 4.1				
Actual rating vs predicted based on parents' avg. inc. of \$ n/a: n/a		Rank: 28/262		2016-17 Last 5 Years 16/225		
Academic Performance	2013	2014	2015	2016	2017	Trend
Average exam mark	70.8	69.5	69.4	69.5	69.1	▼
Percentage of exams failed	5.6	8.6	6.9	8.7	9.4	—
School vs exam mark difference	7.0	7.6	8.6	8.2	8.5	—
Language Arts gender gap	n/a	n/a	n/a	M 0.1	F 3.2	n/a
Math gender gap	n/a	n/a	n/a	M 1.3	M 3.1	n/a
Courses taken per student	n/a	n/a	n/a	4.3	4.3	n/a
Diploma completion rate	98.7	97.1	98.0	98.3	98.0	—
Delayed advancement rate	0.0	1.0	0.0	0.0	0.0	—
Overall rating out of 10	8.3	7.9	7.9	8.3	8.0	—

Oilfields [Public] Black Diamond		Gr 12 Enrollment: 60				
ESL (%): 4.1	Special needs (%): 20.9	Alt. French (%): 0.0				
Actual rating vs predicted based on parents' avg. inc. of \$ n/a: n/a		Rank: 187/262		2016-17 Last 5 Years 159/225		
Academic Performance	2013	2014	2015	2016	2017	Trend
Average exam mark	63.5	60.1	63.0	62.6	62.3	—
Percentage of exams failed	19.1	27.9	18.3	19.5	19.5	—
School vs exam mark difference	8.8	12.5	10.4	11.1	9.0	—
Language Arts gender gap	n/a	n/a	n/a	F 1.7	F 1.3	n/a
Math gender gap	n/a	n/a	n/a	F 8.4	M 2.5	n/a
Courses taken per student	n/a	n/a	n/a	3.3	2.8	n/a
Diploma completion rate	86.7	89.4	81.3	89.8	80.8	—
Delayed advancement rate	18.9	16.5	24.5	20.9	27.6	—
Overall rating out of 10	5.9	5.0	5.5	5.6	5.3	—

Strathcona-Tweedsmuir [Private] Okotoks		Gr 12 Enrollment: 71				
ESL (%): 0.0	Special needs (%): 0.0	Alt. French (%): 0.0				
Actual rating vs predicted based on parents' avg. inc. of \$ n/a: n/a		Rank: 21/262		2016-17 Last 5 Years 5/225		
Academic Performance	2013	2014	2015	2016	2017	Trend
Average exam mark	73.8	76.1	77.5	76.1	72.3	—
Percentage of exams failed	3.9	5.1	4.7	4.2	9.5	—
School vs exam mark difference	8.7	6.4	5.3	7.4	9.2	—
Language Arts gender gap	n/a	n/a	n/a	F 2.9	F 4.6	n/a
Math gender gap	n/a	n/a	n/a	M 0.6	M 2.8	n/a

Olds Koinonia [Public] Olds		Gr 12 Enrollment: 14					
ESL (%)	4.4	Special needs (%)		3.4		Alt. French (%)	0.0
Actual rating vs predicted based on parents' avg. inc. of \$ n/a: n/a		2016-17		Last 5 Years		Rank: 8/262 12/225	
Academic Performance	2013	2014	2015	2016	2017	2018	Trend
Average exam mark	68.4	65.2	71.6	71.3	74.8	▲	▲
Percentage of exams failed	10.1	8.1	6.0	8.9	1.4	▲	▲
School vs exam mark difference	7.8	7.6	1.2	4.2	6.1	—	—
Language Arts gender gap	n/a	n/a	n/a	M 4.7	n/a	n/a	n/a
Math gender gap	n/a	n/a	n/a	F 5.1	n/a	n/a	n/a
Courses taken per student	n/a	n/a	n/a	3.9	4.4	n/a	n/a
Diploma completion rate	95.7	100.0	94.7	95.0	100.0	—	—
Delayed advancement rate	13.0	16.3	16.6	13.3	8.1	—	—
Overall rating out of 10	7.4	7.4	8.6	8.3	9.1	▲	▲

Spruce View [Public] Spruce View		Gr 12 Enrollment: 24					
ESL (%)	n/a	Special needs (%)		12.0		Alt. French (%)	0.0
Actual rating vs predicted based on parents' avg. inc. of \$ n/a: n/a		2016-17		Last 5 Years		Rank: 74/262 n/a	
Academic Performance	2013	2014	2015	2016	2017	2018	Trend
Average exam mark	56.7	57.6	n/a	55.7	64.2	n/a	n/a
Percentage of exams failed	22.2	29.9	n/a	35.5	17.7	n/a	n/a
School vs exam mark difference	7.9	11.9	n/a	17.1	10.1	n/a	n/a
Language Arts gender gap	n/a	n/a	n/a	n/a	n/a	n/a	n/a
Math gender gap	n/a	n/a	n/a	n/a	n/a	n/a	n/a
Courses taken per student	n/a	n/a	n/a	3.8	4.5	n/a	n/a
Diploma completion rate	81.0	92.0	n/a	91.3	100.0	n/a	n/a
Delayed advancement rate	24.4	35.9	n/a	21.9	n/a	n/a	n/a
Overall rating out of 10	4.7	4.1	n/a	3.6	6.9	n/a	n/a

Sundre [Public] Sundre		Gr 12 Enrollment: 60					
ESL (%)	2.4	Special needs (%)		12.6		Alt. French (%)	0.0
Actual rating vs predicted based on parents' avg. inc. of \$ n/a: n/a		2016-17		Last 5 Years		Rank: 222/262 131/225	
Academic Performance	2013	2014	2015	2016	2017	2018	Trend
Average exam mark	62.7	63.5	68.1	63.3	59.9	—	—
Percentage of exams failed	17.5	16.5	11.9	16.9	23.8	—	—
School vs exam mark difference	8.5	7.6	7.4	13.2	10.5	—	—
Language Arts gender gap	n/a	n/a	n/a	F 5.9	F 4.4	n/a	n/a
Math gender gap	n/a	n/a	n/a	F 11.6	F 13.5	n/a	n/a
Courses taken per student	n/a	n/a	n/a	3.3	2.7	n/a	n/a
Diploma completion rate	98.6	90.0	79.3	96.2	87.9	—	—
Delayed advancement rate	4.7	16.0	25.4	9.7	12.5	—	—
Overall rating out of 10	6.5	6.4	6.5	5.8	4.6	▼	▼

PEACE RIVER AREA

Fairview [Public] Fairview		Gr 12 Enrollment: 29					
ESL (%)	n/a	Special needs (%)		11.4		Alt. French (%)	0.0
Actual rating vs predicted based on parents' avg. inc. of \$ n/a: n/a		2016-17		Last 5 Years		Rank: 161/262 131/225	
Academic Performance	2013	2014	2015	2016	2017	2018	Trend
Average exam mark	65.4	66.1	60.0	64.5	60.1	—	—
Percentage of exams failed	15.9	14.8	17.9	15.9	24.4	—	—
School vs exam mark difference	6.7	10.2	11.5	14.6	11.2	—	—
Language Arts gender gap	n/a	n/a	n/a	F 5.6	n/a	n/a	n/a
Math gender gap	n/a	n/a	n/a	F 3.4	n/a	n/a	n/a
Courses taken per student	n/a	n/a	n/a	4.6	3.8	n/a	n/a
Diploma completion rate	79.2	85.4	91.1	93.5	93.1	▲	▲
Delayed advancement rate	24.1	21.9	9.8	14.3	9.1	▲	▲
Overall rating out of 10	6.1	6.3	5.4	6.6	5.6	—	—

Georges P Vanier [Public] Donnelly		Gr 12 Enrollment: 81					
ESL (%)	n/a	Special needs (%)		17.1		Alt. French (%)	27.6
Actual rating vs predicted based on parents' avg. inc. of \$ n/a: n/a		2016-17		Last 5 Years		Rank: 233/262 159/225	
Academic Performance	2013	2014	2015	2016	2017	2018	Trend
Average exam mark	66.7	65.1	62.9	61.6	59.8	▼	▼
Percentage of exams failed	12.3	15.5	22.5	20.7	27.2	▼	▼
School vs exam mark difference	5.3	8.5	10.5	9.8	13.4	▼	▼
Language Arts gender gap	n/a	n/a	n/a	n/a	M 0.6	n/a	n/a
Math gender gap	n/a	n/a	n/a	n/a	F 7.8	n/a	n/a
Courses taken per student	n/a	n/a	n/a	3.2	3.5	n/a	n/a
Diploma completion rate	86.4	81.7	89.1	76.9	85.1	—	—
Delayed advancement rate	21.6	39.4	18.5	42.9	55.5	—	—
Overall rating out of 10	7.0	5.7	5.5	4.8	4.3	▼	▼

Glenmary [Separate] Peace River		Gr 12 Enrollment: 93					
ESL (%)	5.1	Special needs (%)		18.4		Alt. French (%)	16.9
Actual rating vs predicted based on parents' avg. inc. of \$ n/a: n/a		2016-17		Last 5 Years		Rank: 111/262 125/225	
Academic Performance	2013	2014	2015	2016	2017	2018	Trend
Average exam mark	64.5	64.2	62.3	64.1	63.7	—	—
Percentage of exams failed	14.4	16.5	19.1	17.2	15.5	—	—
School vs exam mark difference	5.1	5.6	7.8	7.4	8.3	—	—
Language Arts gender gap	n/a	n/a	n/a	F 2.7	M 0.1	n/a	n/a
Math gender gap	n/a	n/a	n/a	F 13.4	M 3.1	n/a	n/a
Courses taken per student	n/a	n/a	n/a	2.8	3.7	n/a	n/a
Diploma completion rate	87.3	78.8	88.6	80.3	82.0	—	—
Delayed advancement rate	17.8	30.2	13.0	31.8	23.9	—	—
Overall rating out of 10	6.7	6.1	6.0	5.3	6.4	—	—

Grimshaw [Public] Grimshaw		Gr 12 Enrollment: 33					
ESL (%)	n/a	Special needs (%)		12.4		Alt. French (%)	0.0
Actual rating vs predicted based on parents' avg. inc. of \$ n/a: n/a		2016-17		Last 5 Years		Rank: 112/262 166/225	
Academic Performance	2013	2014	2015	2016	2017	2018	Trend
Average exam mark	59.2	60.3	60.7	62.5	65.6	▲	▲
Percentage of exams failed	23.1	20.0	25.5	14.4	11.8	—	—
School vs exam mark difference	5.1	9.0	6.2	6.0	5.8	—	—
Language Arts gender gap	n/a	n/a	n/a	n/a	n/a	n/a	n/a
Math gender gap	n/a	n/a	n/a	n/a	n/a	n/a	n/a
Courses taken per student	n/a	n/a	n/a	2.8	3.0	n/a	n/a
Diploma completion rate	66.7	73.1	85.3	85.7	84.0	▲	▲
Delayed advancement rate	49.4	39.5	33.2	41.6	40.6	—	—
Overall rating out of 10	4.5	4.9	5.3	5.9	6.3	▲	▲

Peace River [Public] Peace River		Gr 12 Enrollment: 71					
ESL (%)	n/a	Special needs (%)		8.8		Alt. French (%)	8.4
Actual rating vs predicted based on parents' avg. inc. of \$ n/a: n/a		2016-17		Last 5 Years		Rank: 237/262 198/225	
Academic Performance	2013	2014	2015	2016	2017	2018	Trend
Average exam mark	60.4	62.5	61.9	55.8	58.7	—	—
Percentage of exams failed	23.7	18.5	17.7	32.7	24.5	—	—
School vs exam mark difference	7.6	6.4	2.5	9.6	7.4	—	—
Language Arts gender gap	n/a	n/a	n/a	F 3.8	n/a	n/a	n/a
Math gender gap	n/a	n/a	n/a	F 2.8	n/a	n/a	n/a
Courses taken per student	n/a	n/a	n/a	3.1	2.8	n/a	n/a
Diploma completion rate	68.3	81.0	74.6	73.5	59.4	—	—
Delayed advancement rate	35.1	21.7	36.8	39.5	47.7	—	—
Overall rating out of 10	4.3	5.9	5.6	3.7	4.1	—	—

PICTURE BUTTE AREA

Crowstn [Public] Coleman		Gr 12 Enrollment: 42					
ESL (%)	6.5	Special needs (%)		10.4		Alt. French (%)	0.0
Actual rating vs predicted based on parents' avg. inc. of \$ n/a: n/a		2016-17		Last 5 Years		Rank: 156/262 92/225	
Academic Performance	2013	2014	2015	2016	2017	2018	Trend
Average exam mark	65.2	66.8	67.4	60.8	65.1	—	—
Percentage of exams failed	15.5	10.1	14.9	19.5	11.0	—	—
School vs exam mark difference	4.7	4.4	5.6	10.4	10.8	▼	▼
Language Arts gender gap	n/a	n/a	n/a	F 3.6	n/a	n/a	n/a
Math gender gap	n/a	n/a	n/a	F 7.2	n/a	n/a	n/a
Courses taken per student	n/a	n/a	n/a	2.7	3.0	n/a	n/a
Diploma completion rate	87.0	89.2	93.3	88.1	84.2	—	—
Delayed advancement rate	11.9	7.1	9.4	29.1	30.3	▼	▼
Overall rating out of 10	7.0	7.5	7.4	5.0	5.7	—	—

Hope Christian [Private] Champion		Gr 12 Enrollment: 118					
ESL (%)	0.0	Special needs (%)		n/a		Alt. French (%)	0.0
Actual rating vs predicted based on parents' avg. inc. of \$ n/a: n/a		2016-17		Last 5 Years		Rank: 259/262 n/a	
Academic Performance	2013	2014	2015	2016	2017	2018	Trend
Average exam mark	n/a	54.2	66.5	58.3	48.6	n/a	n/a
Percentage of exams failed	n/a	28.1	15.8	28.1	51.0	n/a	n/a
School vs exam mark difference	n/a	26.7	15.4	20.3	30.0	n/a	n/a
Language Arts gender gap	n/a	n/a	n/a	F 12.8	F 0.6	n/a	n/a
Math gender gap	n/a	n/a	n/a	M 7.1	F 0.2	n/a	n/a
Courses taken per student	n/a	n/a	n/a	0.8	1.0	n/a	n/a
Diploma completion rate	n/a	50.0	50.0	43.5	28.0	n/a	n/a
Delayed advancement rate	n/a	43.6	31.7	64.3	32.8	n/a	n/a
Overall rating out of 10	n/a	0.4	4.5	1.1	0.0	n/a	n/a

Picture Butte [Public] Picture Butte		Gr 12 Enrollment: 37					
ESL (%)	13.8	Special needs (%)		24.1		Alt. French (%)	0.0
Actual rating vs predicted based on parents' avg. inc. of \$ n/a: n/a		2016-17		Last 5 Years		Rank: 178/262 105/225	
Academic Performance	2013	2014	2015	2016	2017	2018	Trend
Average exam mark	65.5	69.6	67.6	63.3	64.0	—	—
Percentage of exams failed	14.3	9.6	9.3	10.5	8.6	▲	▲
School vs exam mark difference	10.2	7.5	4.7	6.8	9.0	—	—
Language Arts gender gap	n/a	n/a	n/a	n/a	n/a	n/a	n/a
Math gender gap	n/a	n/a	n/a	n/a	n/a	n/a	n/a
Courses taken per student	n/a	n/a	n/a	2.4	2.5	n/a	n/a
Diploma completion rate	94.4	91.7	73.7	72.5	78.8	▼	▼
Delayed advancement rate	3.3	14.4	33.0	49.0	45.0	▼	▼
Overall rating out of 10	6.7	7.5	6.7	5.4	5.4	—	—

Willow Creek [Public] Claresholm		Gr 12 Enrollment: 48					
ESL (%)	5.6	Special needs (%)		9.3		Alt. French (%)	0.0
Actual rating vs predicted based on parents' avg. inc. of \$ n/a: n/a		2016-17		Last 5 Years		Rank: 178/262 92/225	
Academic Performance	2013	2014 </					

ROCKY MOUNTAIN HOUSE AREA

Caroline [Public] Caroline		Gr 12 Enrollment: 27				
ESL (%)	n/a	Special needs (%): 11.3			Alt. French (%): 0.0	
Actual rating vs predicted based on parents' avg. inc. of \$ n/a: n/a						
		Rank: 92/262		2016-17 Last 5 Years 203/225		
Academic Performance	2013	2014	2015	2016	2017	Trend
Average exam mark	59.8	55.5	59.0	53.8	65.2	—
Percentage of exams failed	24.4	33.0	23.8	28.6	11.8	—
School vs exam mark difference	13.3	11.7	11.9	10.0	10.5	▲
Language Arts gender gap	n/a	n/a	n/a	n/a	n/a	n/a
Math gender gap	n/a	n/a	n/a	n/a	n/a	n/a
Courses taken per student	n/a	n/a	n/a	2.2	4.2	n/a
Diploma completion rate	85.0	77.4	84.6	76.0	84.0	—
Delayed advancement rate	26.8	24.3	22.5	33.8	n/a	n/a
Overall rating out of 10	4.8	3.8	4.8	3.1	6.6	—

David Thompson [Public] Condor		Gr 12 Enrollment: 35				
ESL (%)	0.0	Special needs (%): 7.1			Alt. French (%): 0.0	
Actual rating vs predicted based on parents' avg. inc. of \$ n/a: n/a						
		Rank: 85/262		2016-17 Last 5 Years 195/225		
Academic Performance	2013	2014	2015	2016	2017	Trend
Average exam mark	55.5	56.7	58.5	60.7	66.6	▲
Percentage of exams failed	31.9	35.2	24.7	22.1	11.1	▲
School vs exam mark difference	12.9	12.4	8.7	9.1	9.1	▲
Language Arts gender gap	n/a	n/a	n/a	F 12.5	n/a	n/a
Math gender gap	n/a	n/a	n/a	M 9.3	n/a	n/a
Courses taken per student	n/a	n/a	n/a	3.8	3.3	n/a
Diploma completion rate	86.2	70.7	66.7	88.1	85.7	—
Delayed advancement rate	25.9	32.3	32.4	21.0	14.7	—
Overall rating out of 10	3.8	3.5	4.5	5.4	6.7	▲

H. J. Cody [Public] Sylvan Lake		Gr 12 Enrollment: 156				
ESL (%)	1.1	Special needs (%): 11.2			Alt. French (%): 2.4	
Actual rating vs predicted based on parents' avg. inc. of \$ n/a: n/a						
		Rank: 144/262		2016-17 Last 5 Years 138/225		
Academic Performance	2013	2014	2015	2016	2017	Trend
Average exam mark	60.4	62.7	64.0	61.7	63.2	—
Percentage of exams failed	23.6	18.2	16.9	20.2	17.4	—
School vs exam mark difference	10.1	8.5	6.4	8.8	8.0	—
Language Arts gender gap	n/a	n/a	n/a	F 1.0	F 4.3	n/a
Math gender gap	n/a	n/a	n/a	F 4.3	F 8.6	n/a
Courses taken per student	n/a	n/a	n/a	3.4	3.4	n/a
Diploma completion rate	87.6	89.6	89.6	91.9	91.2	—
Delayed advancement rate	14.4	18.5	16.4	18.7	15.4	—
Overall rating out of 10	5.4	6.0	6.4	6.0	5.9	—

St. Dominic [Separate] Rocky Mountain House		Gr 12 Enrollment: 34				
ESL (%)	9.4	Special needs (%): 3.8			Alt. French (%): 0.0	
Actual rating vs predicted based on parents' avg. inc. of \$ n/a: n/a						
		Rank: 32/262		2016-17 Last 5 Years n/a		
Academic Performance	2013	2014	2015	2016	2017	Trend
Average exam mark	63.3	n/a	64.9	65.4	67.8	n/a
Percentage of exams failed	20.3	n/a	7.5	12.7	10.7	n/a
School vs exam mark difference	9.4	n/a	6.8	6.2	6.1	n/a
Language Arts gender gap	n/a	n/a	n/a	n/a	F 0.6	n/a
Math gender gap	n/a	n/a	n/a	n/a	M 0.5	n/a
Courses taken per student	n/a	n/a	n/a	3.1	3.8	n/a
Diploma completion rate	83.3	n/a	88.5	92.3	90.9	n/a
Delayed advancement rate	15.5	n/a	10.2	n/a	11.5	n/a
Overall rating out of 10	5.7	n/a	6.9	6.8	7.7	n/a

Will Sinclair [Public] Rocky Mountain House		Gr 12 Enrollment: 116				
ESL (%)	1.9	Special needs (%): 9.2			Alt. French (%): 2.8	
Actual rating vs predicted based on parents' avg. inc. of \$ n/a: n/a						
		Rank: 187/262		2016-17 Last 5 Years 138/225		
Academic Performance	2013	2014	2015	2016	2017	Trend
Average exam mark	66.0	65.4	61.8	62.4	61.5	▼
Percentage of exams failed	15.0	15.8	21.9	21.5	21.1	▼
School vs exam mark difference	5.6	5.1	7.5	7.1	9.8	—
Language Arts gender gap	n/a	n/a	n/a	M 0.6	M 0.5	n/a
Math gender gap	n/a	n/a	n/a	M 7.8	M 2.0	n/a
Courses taken per student	n/a	n/a	n/a	2.9	3.0	n/a
Diploma completion rate	79.7	83.2	79.3	81.6	82.9	—
Delayed advancement rate	27.9	26.3	23.9	21.8	32.6	—
Overall rating out of 10	6.4	6.7	5.6	5.5	5.3	▼

SHERWOOD PARK AREA

Archbishop Jordan [Separate] Sherwood Park		Gr 12 Enrollment: 296				
ESL (%)	6.2	Special needs (%): 12.3			Alt. French (%): n/a	
Actual rating vs predicted based on parents' avg. inc. of \$ n/a: n/a						
		Rank: 32/262		2016-17 Last 5 Years 36/225		
Academic Performance	2013	2014	2015	2016	2017	Trend
Average exam mark	69.0	68.9	67.8	67.1	67.5	▼
Percentage of exams failed	9.5	8.5	11.1	13.7	11.9	—
School vs exam mark difference	5.9	5.2	6.5	7.9	7.7	—
Language Arts gender gap	n/a	n/a	n/a	F 1.1	M 0.1	n/a
Math gender gap	n/a	n/a	n/a	F 1.7	F 2.3	n/a
Courses taken per student	n/a	n/a	n/a	4.5	4.6	n/a
Diploma completion rate	91.3	85.8	85.5	88.7	89.7	—
Delayed advancement rate	10.4	16.9	13.3	12.2	12.3	—
Overall rating out of 10	7.6	7.6	7.1	7.5	7.8	—

Bev Facey [Public] Sherwood Park		Gr 12 Enrollment: 417				
ESL (%)	0.6	Special needs (%): 11.7			Alt. French (%): 0.0	
Actual rating vs predicted based on parents' avg. inc. of \$ n/a: n/a						
		Rank: 49/262		2016-17 Last 5 Years 43/225		
Academic Performance	2013	2014	2015	2016	2017	Trend
Average exam mark	68.6	68.1	68.1	66.3	67.7	—
Percentage of exams failed	10.6	10.9	9.9	13.3	14.4	▼
School vs exam mark difference	3.2	3.6	3.9	6.2	6.2	▼
Language Arts gender gap	n/a	n/a	n/a	M 0.5	M 0.1	n/a
Math gender gap	n/a	n/a	n/a	F 4.5	F 0.1	n/a
Courses taken per student	n/a	n/a	n/a	3.7	3.8	n/a
Diploma completion rate	85.7	81.0	87.3	85.8	87.3	—
Delayed advancement rate	17.7	21.2	14.0	16.7	14.3	—
Overall rating out of 10	7.6	7.4	7.6	7.1	7.3	—

New Sarepta [Public] New Sarepta		Gr 12 Enrollment: 26				
ESL (%)	n/a	Special needs (%): 19.7			Alt. French (%): 0.0	
Actual rating vs predicted based on parents' avg. inc. of \$ n/a: n/a						
		Rank: 198/262		2016-17 Last 5 Years n/a		
Academic Performance	2013	2014	2015	2016	2017	Trend
Average exam mark	n/a	65.9	64.4	n/a	59.9	n/a
Percentage of exams failed	n/a	19.0	16.3	n/a	21.7	n/a
School vs exam mark difference	n/a	8.0	10.9	n/a	10.2	n/a
Language Arts gender gap	n/a	n/a	n/a	n/a	n/a	n/a
Math gender gap	n/a	n/a	n/a	n/a	n/a	n/a
Courses taken per student	n/a	n/a	n/a	3.4	3.4	n/a
Diploma completion rate	n/a	96.3	95.8	n/a	73.1	n/a
Delayed advancement rate	n/a	10.6	6.4	n/a	26.8	n/a
Overall rating out of 10	n/a	7.0	6.6	n/a	5.1	n/a

Salisbury [Public] Sherwood Park		Gr 12 Enrollment: 323				
ESL (%)	3.8	Special needs (%): 11.4			Alt. French (%): 0.0	
Actual rating vs predicted based on parents' avg. inc. of \$ n/a: n/a						
		Rank: 85/262		2016-17 Last 5 Years 118/225		
Academic Performance	2013	2014	2015	2016	2017	Trend
Average exam mark	63.2	63.8	64.6	64.2	65.0	—
Percentage of exams failed	19.8	18.4	16.4	16.4	16.8	▲
School vs exam mark difference	5.9	5.7	5.9	7.0	5.9	—
Language Arts gender gap	n/a	n/a	n/a	F 0.9	M 0.8	n/a
Math gender gap	n/a	n/a	n/a	M 1.5	M 2.5	n/a
Courses taken per student	n/a	n/a	n/a	3.5	3.7	n/a
Diploma completion rate	77.6	82.3	75.2	86.3	85.4	—
Delayed advancement rate	25.3	24.0	27.1	16.3	19.6	—
Overall rating out of 10	5.7	6.2	6.0	6.6	6.7	▲

Strathcona Christian [Public] Sherwood Park		Gr 12 Enrollment: 107				
ESL (%)	n/a	Special needs (%): 6.2			Alt. French (%): 0.0	
Actual rating vs predicted based on parents' avg. inc. of \$ n/a: n/a						
		Rank: 13/262		2016-17 Last 5 Years 12/225		
Academic Performance	2013	2014	2015	2016	2017	Trend
Average exam mark	69.9	65.5	71.2	69.7	71.3	—
Percentage of exams failed	10.0	13.1	7.4	9.0	7.3	—
School vs exam mark difference	3.4	5.9	5.0	6.3	5.3	—
Language Arts gender gap	n/a	n/a	n/a	F 0.4	F 1.2	n/a
Math gender gap	n/a	n/a	n/a	M 1.2	M 9.9	n/a
Courses taken per student	n/a	n/a	n/a	4.3	4.6	n/a
Diploma completion rate	94.9	93.9	96.3	96.4	95.3	—
Delayed advancement rate	3.6	5.5	21.3	5.1	6.6	—
Overall rating out of 10	8.3	7.4	8.4	8.4	8.5	—

Tofield [Public] Tofield		Gr 12 Enrollment: 35				
ESL (%)	n/a	Special needs (%): 19.6			Alt. French (%): 0.0	
Actual rating vs predicted based on parents' avg. inc. of \$ n/a: n/a						
		Rank: 69/262		2016-17 Last 5 Years 73/225		
Academic Performance	2013	2014	2015	2016	2017	Trend
Average exam mark	64.6	64.3	65.8	62.0	64.5	—
Percentage of exams failed	13.2	17.4	14.4	18.1	16.2	—
School vs exam mark difference	6.6	6.6	5.4	11.6	9.7	—
Language Arts gender gap	n/a	n/a	n/a	F 9.0	n/a	n/a
Math gender gap	n/a	n/a	n/a	F 6.2	n/a	n/a
Courses taken per student	n/a	n/a	n/a	3.7	4.4	n/a
Diploma completion rate	89.7	89.5	100.0	100.0	91.2	—
Delayed advancement rate	23.5	21.3	7.5	1.1	6.1	▲
Overall rating out of 10	6.7	6.5	7.4	6.0	7.0	—

ST. ALBERT/STONY PLAIN AREA

Bellerose [Public] St. Albert		Gr 12 Enrollment: 336				
ESL (%)	2.0	Special needs (%): 17.3			Alt. French (%): 0.0	
Actual rating vs predicted based on parents' avg. inc. of \$ n/a: n/a						
		Rank: 112/262		2016-17 Last 5 Years 138/225		
Academic Performance	2013	2014	2015	2016	2017	Trend
Average exam mark	64.5	63.1	63.5	63.3	65.4	—
Percentage of exams failed	18.0	18.7	20.5	18.4	14.9	—
School vs exam mark difference	6.6	8.2	8.9	7.9	6.3	—
Language Arts gender gap	n/a	n/a	n/a	M 0.3	F 2.1	n/a
Math gender gap	n/a	n/a	n/a	F 2.7	F 0.4	n/a
Courses taken per student	n/a	n/a	n/a	3.7	3.4	n/a
Diploma completion rate	74.1	79.6	80.0	81.6	80.7	—
Delayed advancement rate	28.6	27.7	22.8	n/a	n/a	n/a
Overall rating out of 10	5.7	5.6	5.5	6.2	6.3	—

Memorial [Public] Stony Plain		Gr 12 Enrollment: 361				
ESL (%)	0.8	Special needs (%): 14.7			Alt. French (%): 0.0	
Actual rating vs predicted based on parents' avg. inc. of \$ n/a: n/a						
		Rank: 99/262		2016-17 Last 5 Years 83/225		
Academic Performance	2013	2014	2015	2016	2017	Trend
Average exam mark	64.3	64.5	65.6	65.7	66.6	▲
Percentage of exams failed	15.7	15.2	13.1	12.7	9.9	▲
School vs exam mark difference	6.6	5.9	5.2</			

ST. PAUL/BONNYVILLE AREA

Assumption [Separate] Cold Lake		Gr 12 Enrollment: 69				
ESL (%): 7.8	Special needs (%): 12.4	2016-17		Last 5 Years		
Actual rating vs predicted based on parents' avg. inc. of \$ n/a		Rank:	161/262	154/225		
Academic Performance	2013	2014	2015	2016	2017	Trend
Average exam mark	66.8	66.2	63.4	66.9	66.5	—
Percentage of exams failed	15.9	13.1	18.3	18.0	10.8	—
School vs exam mark difference	7.0	4.9	8.6	7.4	9.2	—
Language Arts gender gap	n/a	n/a	n/a	M 2.2	F 2.8	n/a
Math gender gap	n/a	n/a	n/a	F 11.0	F 2.9	n/a
Courses taken per student	n/a	n/a	n/a	4.0	3.4	n/a
Diploma completion rate	93.8	89.3	91.9	87.5	86.7	▼
Delayed advancement rate	12.3	20.2	16.2	21.2	26.0	▼
Overall rating out of 10	7.0	7.1	6.2	6.6	6.5	—

Bonnyville [Public] Bonnyville		Gr 12 Enrollment: 95				
ESL (%): 0.0	Special needs (%): 13.8	2016-17		Last 5 Years		
Actual rating vs predicted based on parents' avg. inc. of \$ n/a		Rank:	85/262	83/225		
Academic Performance	2013	2014	2015	2016	2017	Trend
Average exam mark	62.6	63.5	61.5	59.6	62.0	—
Percentage of exams failed	18.9	22.3	21.2	23.1	17.5	—
School vs exam mark difference	6.2	4.0	7.5	7.0	7.7	—
Language Arts gender gap	n/a	n/a	n/a	F 7.4	F 4.3	n/a
Math gender gap	n/a	n/a	n/a	F 7.1	F 3.0	n/a
Courses taken per student	n/a	n/a	n/a	3.0	3.0	n/a
Diploma completion rate	83.5	79.2	85.6	76.1	87.6	—
Delayed advancement rate	17.1	25.6	18.8	26.9	11.4	—
Overall rating out of 10	6.1	6.2	5.7	4.6	5.6	—

Cold Lake [Public] Cold Lake		Gr 12 Enrollment: 155				
ESL (%): 3.2	Special needs (%): 18.5	2016-17		Last 5 Years		
Actual rating vs predicted based on parents' avg. inc. of \$ n/a		Rank:	85/262	83/225		
Academic Performance	2013	2014	2015	2016	2017	Trend
Average exam mark	67.4	66.4	66.4	65.1	67.5	—
Percentage of exams failed	10.9	10.3	11.8	14.2	11.4	—
School vs exam mark difference	4.0	3.3	3.8	4.7	5.3	—
Language Arts gender gap	n/a	n/a	n/a	F 0.6	F 3.7	n/a
Math gender gap	n/a	n/a	n/a	F 14.4	F 5.9	n/a
Courses taken per student	n/a	n/a	n/a	3.3	3.4	n/a
Diploma completion rate	69.2	80.7	81.8	85.6	88.8	▲
Delayed advancement rate	32.7	33.8	27.6	30.3	25.6	▲
Overall rating out of 10	6.4	7.0	6.9	6.2	6.7	—

F G Miller [Public] Elk Point		Gr 12 Enrollment: 32				
ESL (%): 3.9	Special needs (%): 10.0	2016-17		Last 5 Years		
Actual rating vs predicted based on parents' avg. inc. of \$ n/a		Rank:	192/262	184/225		
Academic Performance	2013	2014	2015	2016	2017	Trend
Average exam mark	65.7	65.9	69.3	66.4	69.4	—
Percentage of exams failed	11.0	14.9	6.2	11.5	5.8	—
School vs exam mark difference	3.8	4.8	3.1	5.0	2.0	—
Language Arts gender gap	n/a	n/a	n/a	n/a	M 11.9	n/a
Math gender gap	n/a	n/a	n/a	n/a	M 9.5	n/a
Courses taken per student	n/a	n/a	n/a	3.3	3.2	n/a
Diploma completion rate	96.7	85.0	92.9	100.0	96.9	—
Delayed advancement rate	8.1	19.9	19.0	2.6	8.7	—
Overall rating out of 10	7.6	6.8	8.1	7.6	7.3	—

Glendon [Public] Glendon		Gr 12 Enrollment: 26				
ESL (%): 5.9	Special needs (%): 14.5	2016-17		Last 5 Years		
Actual rating vs predicted based on parents' avg. inc. of \$ n/a		Rank:	192/262	184/225		
Academic Performance	2013	2014	2015	2016	2017	Trend
Average exam mark	56.2	63.8	56.6	67.4	60.5	—
Percentage of exams failed	34.6	15.9	35.6	5.8	20.3	—
School vs exam mark difference	14.2	7.8	13.9	5.0	15.3	—
Language Arts gender gap	n/a	n/a	n/a	n/a	n/a	n/a
Math gender gap	n/a	n/a	n/a	n/a	n/a	n/a
Courses taken per student	n/a	n/a	n/a	3.3	3.5	n/a
Diploma completion rate	95.5	64.7	61.5	100.0	100.0	—
Delayed advancement rate	20.0	31.3	38.6	n/a	2.2	n/a
Overall rating out of 10	3.9	5.3	3.0	7.7	5.2	—

Mallaig [Public] Mallaig		Gr 12 Enrollment: 14				
ESL (%): n/a	Special needs (%): 24.8	2016-17		Last 5 Years		
Actual rating vs predicted based on parents' avg. inc. of \$ n/a		Rank:	121/262	67/225		
Academic Performance	2013	2014	2015	2016	2017	Trend
Average exam mark	61.1	59.0	66.5	69.7	67.8	▲
Percentage of exams failed	22.8	25.8	10.4	15.0	13.3	—
School vs exam mark difference	14.5	12.4	6.5	8.7	8.9	—
Language Arts gender gap	n/a	n/a	n/a	n/a	n/a	n/a
Math gender gap	n/a	n/a	n/a	n/a	n/a	n/a
Courses taken per student	n/a	n/a	n/a	4.2	5.0	n/a
Diploma completion rate	85.7	95.7	100.0	100.0	100.0	▲
Delayed advancement rate	12.1	1.4	6.4	2.0	0.0	—
Overall rating out of 10	5.0	5.4	7.7	7.8	8.2	▲

Notre Dame [Separate] Bonnyville		Gr 12 Enrollment: 65				
ESL (%): 5.9	Special needs (%): 12.3	2016-17		Last 5 Years		
Actual rating vs predicted based on parents' avg. inc. of \$ n/a		Rank:	77/262	146/225		
Academic Performance	2013	2014	2015	2016	2017	Trend
Average exam mark	60.0	61.9	67.2	60.1	63.6	—
Percentage of exams failed	28.1	23.7	10.8	23.6	13.8	—
School vs exam mark difference	9.1	7.9	7.9	14.0	11.5	—
Language Arts gender gap	n/a	n/a	n/a	F 5.2	F 3.1	n/a
Math gender gap	n/a	n/a	n/a	F 5.6	F 0.4	n/a
Courses taken per student	n/a	n/a	n/a	3.4	4.0	n/a
Diploma completion rate	75.0	83.6	87.3	91.7	90.5	▲
Delayed advancement rate	26.8	26.0	12.3	6.8	6.4	▲
Overall rating out of 10	4.6	5.6	6.9	4.9	6.8	—

St. Paul [Public] St. Paul		Gr 12 Enrollment: 139				
ESL (%): 6.4	Special needs (%): 14.6	2016-17		Last 5 Years		
Actual rating vs predicted based on parents' avg. inc. of \$ n/a		Rank:	85/262	53/225		
Academic Performance	2013	2014	2015	2016	2017	Trend
Average exam mark	64.8	69.2	71.6	67.4	65.9	—
Percentage of exams failed	16.0	9.0	8.0	11.1	15.6	—
School vs exam mark difference	6.1	4.5	4.7	5.4	5.3	—
Language Arts gender gap	n/a	n/a	n/a	F 0.3	M 0.3	n/a
Math gender gap	n/a	n/a	n/a	F 0.5	M 6.5	n/a
Courses taken per student	n/a	n/a	n/a	3.0	3.4	n/a
Diploma completion rate	74.8	80.8	85.1	82.2	83.3	—
Delayed advancement rate	30.0	16.8	8.1	12.6	15.2	—
Overall rating out of 10	5.9	7.5	8.0	7.1	6.7	—

STETTLER AREA

Coronation [Public] Coronation		Gr 12 Enrollment: 28				
ESL (%): 2.8	Special needs (%): 12.4	2016-17		Last 5 Years		
Actual rating vs predicted based on parents' avg. inc. of \$ n/a		Rank:	170/262	73/225		
Academic Performance	2013	2014	2015	2016	2017	Trend
Average exam mark	69.0	72.7	64.6	66.1	62.7	—
Percentage of exams failed	10.1	6.5	14.4	17.1	18.2	▼
School vs exam mark difference	7.8	6.2	14.4	13.4	12.7	—
Language Arts gender gap	n/a	n/a	n/a	n/a	n/a	n/a
Math gender gap	n/a	n/a	n/a	n/a	n/a	n/a
Courses taken per student	n/a	n/a	n/a	4.0	3.7	n/a
Diploma completion rate	94.4	96.0	96.2	95.7	85.7	—
Delayed advancement rate	5.6	13.5	7.2	4.2	12.3	—
Overall rating out of 10	7.5	8.1	6.0	6.3	5.5	▼

Delburne Centralized [Public] Delburne		Gr 12 Enrollment: 11				
ESL (%): n/a	Special needs (%): 6.1	2016-17		Last 5 Years		
Actual rating vs predicted based on parents' avg. inc. of \$ n/a		Rank:	170/262	159/225		
Academic Performance	2013	2014	2015	2016	2017	Trend
Average exam mark	59.8	57.2	64.8	60.9	60.2	—
Percentage of exams failed	26.1	29.1	14.7	18.0	17.7	—
School vs exam mark difference	10.6	13.7	4.9	9.8	13.4	—
Language Arts gender gap	n/a	n/a	n/a	n/a	n/a	n/a
Math gender gap	n/a	n/a	n/a	n/a	n/a	n/a
Courses taken per student	n/a	n/a	n/a	3.4	3.4	n/a
Diploma completion rate	86.0	87.5	90.6	90.0	100.0	▲
Delayed advancement rate	9.1	6.8	3.2	8.5	n/a	n/a
Overall rating out of 10	4.8	4.5	7.1	5.8	5.5	—

Forestburg [Public] Forestburg		Gr 12 Enrollment: 20				
ESL (%): n/a	Special needs (%): 11.8	2016-17		Last 5 Years		
Actual rating vs predicted based on parents' avg. inc. of \$ n/a		Rank:	133/262	n/a		
Academic Performance	2013	2014	2015	2016	2017	Trend
Average exam mark	60.0	n/a	59.7	n/a	66.3	n/a
Percentage of exams failed	23.9	n/a	20.4	n/a	9.5	n/a
School vs exam mark difference	11.3	n/a	9.8	n/a	9.1	n/a
Language Arts gender gap	n/a	n/a	n/a	n/a	n/a	n/a
Math gender gap	n/a	n/a	n/a	n/a	n/a	n/a
Courses taken per student	n/a	n/a	n/a	n/a	3.3	n/a
Diploma completion rate	72.7	n/a	71.2	n/a	75.0	n/a
Delayed advancement rate	40.0	n/a	39.8	n/a	32.5	n/a
Overall rating out of 10	4.0	n/a	4.8	n/a	6.1	n/a

William E Hay [Public] Stettler		Gr 12 Enrollment: 111				
ESL (%): 0.0	Special needs (%): 9.7	2016-17		Last 5 Years		
Actual rating vs predicted based on parents' avg. inc. of \$ n/a		Rank:	133/262	172/225		
Academic Performance	2013	2014	2015	2016	2017	Trend
Average exam mark	62.2	62.7	59.2	58.9	62.8	—
Percentage of exams failed	18.8	21.9	28.0	30.4	19.7	—
School vs exam mark difference	7.7	11.2	11.1	9.9	8.0	—
Language Arts gender gap	n/a	n/a	n/a	M 2.5	F 1.5	n/a
Math gender gap	n/a	n/a	n/a	F 9.3	F 3.0	n/a
Courses taken per student	n/a	n/a	n/a	3.4	3.3	n/a
Diploma completion rate	91.1	79.7	85.8	82.6	86.7	—
Delayed advancement rate	14.3	24.5	19.2	20.7	22.2	—
Overall rating out of 10	6.1	5.2	4.6	4.5	5.8	—

STRATHMORE AREA

Holy Cross [Separate] Strathmore		Gr 12 Enrollment: 49				
ESL (%): 6.1	Special needs (%): 19.5	2016-17		Last 5 Years		
Actual rating vs predicted based on parents' avg. inc. of \$ n/a		Rank:	124/262	51/225		
Academic Performance	2013	2014	2015	2016	2017	Trend

McCoy [Separate] Medicine Hat		Gr 12 Enrollment: 223				
ESL (%): 1.2	Special needs (%): 16.4	Alt. French (%): n/a			2016-17 Last 5 Years	
Actual rating vs predicted based on parents' avg. inc. of \$ n/a: n/a		Rank: 204/262 154/225				
Academic Performance	2013	2014	2015	2016	2017	Trend
Average exam mark	67.3	65.6	67.3	64.8	66.2	—
Percentage of exams failed	11.5	17.2	12.1	16.1	17.0	—
School vs exam mark difference	6.0	7.9	6.1	8.6	7.3	—
Language Arts gender gap	n/a	n/a	n/a	M 1.8	F 0.2	n/a
Math gender gap	n/a	n/a	n/a	F 0.2	F 5.3	n/a
Courses taken per student	n/a	n/a	n/a	3.7	3.8	n/a
Diploma completion rate	87.3	85.6	89.7	88.3	87.7	—
Delayed advancement rate	16.8	21.6	13.0	n/a	n/a	n/a
Overall rating out of 10	7.1	6.4	7.2	6.7	6.9	—

Medicine Hat [Public] Medicine Hat		Gr 12 Enrollment: 349				
ESL (%): 9.3	Special needs (%): 19.6	Alt. French (%): 0.0			2016-17 Last 5 Years	
Actual rating vs predicted based on parents' avg. inc. of \$ n/a: n/a		Rank: 204/262 154/225				
Academic Performance	2013	2014	2015	2016	2017	Trend
Average exam mark	64.7	65.1	62.8	63.9	63.0	—
Percentage of exams failed	15.1	13.2	17.7	16.7	19.7	—
School vs exam mark difference	6.3	7.1	8.4	6.5	8.1	—
Language Arts gender gap	n/a	n/a	n/a	F 3.5	F 6.0	n/a
Math gender gap	n/a	n/a	n/a	M 4.7	M 1.8	n/a
Courses taken per student	n/a	n/a	n/a	2.9	3.0	n/a
Diploma completion rate	77.4	83.0	82.7	79.9	78.8	—
Delayed advancement rate	27.8	34.9	25.2	38.4	36.5	—
Overall rating out of 10	5.9	6.2	5.6	5.4	5.0	▼

Senator Gershaw [Public] Bow Island		Gr 12 Enrollment: 39				
ESL (%): 10.3	Special needs (%): 14.8	Alt. French (%): 0.0			2016-17 Last 5 Years	
Actual rating vs predicted based on parents' avg. inc. of \$ n/a: n/a		Rank: 207/262 92/225				
Academic Performance	2013	2014	2015	2016	2017	Trend
Average exam mark	68.9	67.9	66.6	70.2	66.5	—
Percentage of exams failed	12.3	10.6	9.4	6.1	11.7	—
School vs exam mark difference	8.9	9.0	9.6	8.0	8.9	—
Language Arts gender gap	n/a	n/a	n/a	F 10.7	n/a	n/a
Math gender gap	n/a	n/a	n/a	M 2.3	n/a	n/a
Courses taken per student	n/a	n/a	n/a	4.1	2.6	n/a
Diploma completion rate	96.3	92.6	83.3	75.7	55.6	▼
Delayed advancement rate	18.4	13.3	86.7	42.6	61.3	▼
Overall rating out of 10	7.2	7.2	6.5	6.7	4.9	▼

St. Mary's [Separate] Taber		Gr 12 Enrollment: 39				
ESL (%): 23.7	Special needs (%): 14.8	Alt. French (%): 0.0			2016-17 Last 5 Years	
Actual rating vs predicted based on parents' avg. inc. of \$ n/a: n/a		Rank: 92/262 18/225				
Academic Performance	2013	2014	2015	2016	2017	Trend
Average exam mark	58.7	65.6	68.9	61.5	60.9	—
Percentage of exams failed	24.7	15.3	1.3	20.0	24.8	—
School vs exam mark difference	12.3	7.5	5.7	13.4	12.8	—
Language Arts gender gap	n/a	n/a	n/a	n/a	n/a	n/a
Math gender gap	n/a	n/a	n/a	n/a	n/a	n/a
Courses taken per student	n/a	n/a	n/a	3.0	3.6	n/a
Diploma completion rate	81.5	89.3	88.5	88.1	76.3	—
Delayed advancement rate	41.4	19.3	16.7	13.9	37.0	—
Overall rating out of 10	3.8	6.5	7.7	4.9	4.4	—

Vauxhall [Public] Vauxhall		Gr 12 Enrollment: 39				
ESL (%): 13.0	Special needs (%): 9.2	Alt. French (%): 0.0			2016-17 Last 5 Years	
Actual rating vs predicted based on parents' avg. inc. of \$ n/a: n/a		Rank: 92/262 18/225				
Academic Performance	2013	2014	2015	2016	2017	Trend
Average exam mark	74.3	74.7	71.5	69.9	66.4	—
Percentage of exams failed	4.4	3.1	4.5	8.4	10.0	▼
School vs exam mark difference	3.6	5.8	4.6	7.2	9.0	▼
Language Arts gender gap	n/a	n/a	n/a	F 2.7	F 11.6	n/a
Math gender gap	n/a	n/a	n/a	F 9.3	F 18.7	n/a
Courses taken per student	n/a	n/a	n/a	4.0	4.1	n/a
Diploma completion rate	94.5	94.3	89.4	100.0	100.0	—
Delayed advancement rate	11.6	11.3	19.4	14.4	4.2	—
Overall rating out of 10	8.9	8.8	8.1	7.7	6.6	▼

W. R. Myers [Public] Taber		Gr 12 Enrollment: 129				
ESL (%): 5.0	Special needs (%): 14.3	Alt. French (%): 0.0			2016-17 Last 5 Years	
Actual rating vs predicted based on parents' avg. inc. of \$ n/a: n/a		Rank: 92/262 21/225				
Academic Performance	2013	2014	2015	2016	2017	Trend
Average exam mark	68.6	68.1	68.6	67.6	67.1	▼
Percentage of exams failed	7.3	8.2	9.2	8.9	8.3	—
School vs exam mark difference	2.2	2.4	2.7	3.9	4.0	—
Language Arts gender gap	n/a	n/a	n/a	F 2.7	F 2.1	n/a
Math gender gap	n/a	n/a	n/a	F 8.4	F 6.5	n/a
Courses taken per student	n/a	n/a	n/a	3.3	3.3	n/a
Diploma completion rate	94.9	93.3	89.9	92.6	95.2	—
Delayed advancement rate	2.0	9.1	4.7	4.4	6.5	—
Overall rating out of 10	8.5	8.1	7.9	7.4	7.4	▼

VEGREVILLE/FORT SASKATCHEWAN AREA

Adrossan [Public] Adrossan		Gr 12 Enrollment: 122				
ESL (%): n/a	Special needs (%): 8.8	Alt. French (%): 27.6			2016-17 Last 5 Years	
Actual rating vs predicted based on parents' avg. inc. of \$ n/a: n/a		Rank: 32/262 24/225				
Academic Performance	2013	2014	2015	2016	2017	Trend
Average exam mark	67.5	69.9	70.8	70.6	70.4	—
Percentage of exams failed	9.9	7.5	7.4	7.1	7.8	—
School vs exam mark difference	6.3	3.7	5.6	5.7	6.8	—
Language Arts gender gap	n/a	n/a	n/a	F 1.9	M 0.8	n/a
Math gender gap	n/a	n/a	n/a	F 1.0	M 3.6	n/a
Courses taken per student	n/a	n/a	n/a	3.8	4.0	n/a
Diploma completion rate	88.8	92.3	93.4	89.4	97.5	—
Delayed advancement rate	10.4	10.3	4.4	11.4	21.3	—
Overall rating out of 10	7.3	8.1	8.0	7.9	7.8	—

Fort Saskatchewan [Public] Fort Saskatchewan		Gr 12 Enrollment: 132				
ESL (%): 3.2	Special needs (%): 10.3	Alt. French (%): 0.0			2016-17 Last 5 Years	
Actual rating vs predicted based on parents' avg. inc. of \$ n/a: n/a		Rank: 210/262 172/225				
Academic Performance	2013	2014	2015	2016	2017	Trend
Average exam mark	61.8	63.2	63.4	59.8	61.9	—
Percentage of exams failed	22.5	18.0	13.9	20.5	20.1	—
School vs exam mark difference	7.1	7.9	7.5	11.8	10.6	—
Language Arts gender gap	n/a	n/a	n/a	M 2.8	M 0.6	n/a
Math gender gap	n/a	n/a	n/a	F 4.7	F 10.4	n/a
Courses taken per student	n/a	n/a	n/a	2.9	3.0	n/a
Diploma completion rate	79.5	79.0	75.0	74.1	78.3	—
Delayed advancement rate	27.7	24.1	25.4	31.3	29.2	—
Overall rating out of 10	5.4	5.7	5.8	4.5	4.8	—

John Paul II [Separate] Fort Saskatchewan		Gr 12 Enrollment: 84				
ESL (%): 6.9	Special needs (%): 13.0	Alt. French (%): 0.0			2016-17 Last 5 Years	
Actual rating vs predicted based on parents' avg. inc. of \$ n/a: n/a		Rank: 187/262 184/225				
Academic Performance	2013	2014	2015	2016	2017	Trend
Average exam mark	60.9	59.9	58.5	60.7	61.3	—
Percentage of exams failed	23.4	25.5	29.7	28.4	21.6	—
School vs exam mark difference	10.6	13.2	12.0	11.5	10.6	—
Language Arts gender gap	n/a	n/a	n/a	F 4.1	F 1.8	n/a
Math gender gap	n/a	n/a	n/a	F 0.6	F 10.9	n/a
Courses taken per student	n/a	n/a	n/a	3.2	3.5	n/a
Diploma completion rate	88.1	88.0	90.2	81.7	81.0	▼
Delayed advancement rate	12.8	20.3	7.8	18.2	20.9	—
Overall rating out of 10	5.4	4.9	4.7	4.8	5.3	—

Lamont [Public] Lamont		Gr 12 Enrollment: 50				
ESL (%): n/a	Special needs (%): 12.1	Alt. French (%): 0.0			2016-17 Last 5 Years	
Actual rating vs predicted based on parents' avg. inc. of \$ n/a: n/a		Rank: 210/262 172/225				
Academic Performance	2013	2014	2015	2016	2017	Trend
Average exam mark	59.2	62.2	60.8	59.5	62.6	—
Percentage of exams failed	30.0	16.2	21.0	25.0	18.6	—
School vs exam mark difference	6.9	7.6	8.9	11.7	8.5	—
Language Arts gender gap	n/a	n/a	n/a	n/a	F 1.9	n/a
Math gender gap	n/a	n/a	n/a	n/a	F 13.1	n/a
Courses taken per student	n/a	n/a	n/a	3.4	2.6	n/a
Diploma completion rate	72.2	81.4	86.8	94.7	84.2	—
Delayed advancement rate	25.1	28.1	17.5	32.6	49.4	—
Overall rating out of 10	4.6	6.0	5.6	5.1	4.8	—

Redwater [Public] Redwater		Gr 12 Enrollment: 41				
ESL (%): n/a	Special needs (%): 21.1	Alt. French (%): 0.0			2016-17 Last 5 Years	
Actual rating vs predicted based on parents' avg. inc. of \$ n/a: n/a		Rank: 215/262 83/225				
Academic Performance	2013	2014	2015	2016	2017	Trend
Average exam mark	66.0	70.8	65.1	64.0	59.6	—
Percentage of exams failed	12.7	5.5	14.7	16.2	27.1	▼
School vs exam mark difference	6.7	4.2	7.9	5.6	7.0	—
Language Arts gender gap	n/a	n/a	n/a	M 10.8	n/a	n/a
Math gender gap	n/a	n/a	n/a	M 8.5	n/a	n/a
Courses taken per student	n/a	n/a	n/a	3.6	3.0	n/a
Diploma completion rate	90.5	89.3	88.2	93.5	79.5	—
Delayed advancement rate	9.9	26.8	7.7	18.2	30.1	—
Overall rating out of 10	7.2	8.1	6.7	6.2	4.7	▼

St. Mary's [Separate] Vegreville		Gr 12 Enrollment: 44				
ESL (%): 6.1	Special needs (%): 16.6	Alt. French (%): 0.0			2016-17 Last 5 Years	
Actual rating vs predicted based on parents' avg. inc. of \$ n/a: n/a		Rank: 92/262 105/225				
Academic Performance	2013	2014	2015	2016	2017	Trend
Average exam mark	66.4	63.6	67.0	59.8	65.2	—
Percentage of exams failed	17.5	20.4	17.7	26.7	13.0	—
School vs exam mark difference	7.2	8.6	9.4	13.9	10.8	—
Language Arts gender gap	n/a	n/a	n/a	F 2.8	n/a	n/a
Math gender gap	n/a	n/a	n/a	F 1.2	n/a	n/a
Courses taken per student	n/a	n/a	n/a	4.0	4.0	n/a
Diploma completion rate	92.0	83.3	83.9	84.8	88.1	—
Delayed advancement rate	8.6	28.7	14.4	n/a	9.6	n/a
Overall rating out of 10	7.1	6.1	6.5	5.4	6.6	—

Vegreville [Public] Vegreville		Gr 12 Enrollment: 73				
ESL (%): 5.6	Special needs (%): 9.4	Alt. French (%): 0.0			2016-17 Last 5 Years	
Actual rating vs predicted based on parents' avg. inc. of \$ n/a: n/a		Rank: 45/262 83/225				
Academic Performance	2013	2014	2015	2016	2017	Trend
Average exam mark	64.9	65.8	67.8	63.4	70.4	—
Percentage of exams failed	17.2	15.6	9.8	17.6		

WETASKIWIN/DRAYTON VALLEY AREA						
Provost [Public] Provost			Gr 12 Enrollment: 26			
ESL (%): n/a	Special needs (%): 12.1		Alt. French (%): 0.0		2016-17 Last 5 Years	
Actual rating vs predicted based			Rank: 77/262 n/a			
on parents' avg. inc. of \$ n/a: n/a			Rank: 77/262 n/a			
Academic Performance	2013	2014	2015	2016	2017	Trend
Average exam mark	64.7	65.0	65.0	n/a	65.1	n/a
Percentage of exams failed	14.5	10.6	13.8	n/a	8.8	n/a
School vs exam mark difference	6.3	6.3	6.1	n/a	9.1	n/a
Language Arts gender gap	n/a	n/a	n/a	n/a	n/a	n/a
Math gender gap	n/a	n/a	n/a	n/a	n/a	n/a
Courses taken per student	n/a	n/a	n/a	n/a	3.8	n/a
Diploma completion rate	88.9	84.2	76.5	n/a	88.5	n/a
Delayed advancement rate	9.2	16.9	27.6	n/a	14.6	n/a
Overall rating out of 10	6.7	6.8	6.2	n/a	6.8	n/a
Breton [Public] Breton			Gr 12 Enrollment: 22			
ESL (%): n/a	Special needs (%): 13.7		Alt. French (%): 0.0		2016-17 Last 5 Years	
Actual rating vs predicted based			Rank: 170/262 n/a			
on parents' avg. inc. of \$ n/a: n/a			Rank: 170/262 n/a			
Academic Performance	2013	2014	2015	2016	2017	Trend
Average exam mark	n/a	65.3	61.6	59.4	60.3	n/a
Percentage of exams failed	n/a	16.3	21.1	25.3	21.3	n/a
School vs exam mark difference	n/a	7.3	7.9	9.7	12.2	n/a
Language Arts gender gap	n/a	n/a	n/a	n/a	n/a	n/a
Math gender gap	n/a	n/a	n/a	n/a	n/a	n/a
Courses taken per student	n/a	n/a	n/a	2.6	3.3	n/a
Diploma completion rate	n/a	100.0	73.9	75.0	90.5	n/a
Delayed advancement rate	n/a	8.1	33.4	27.4	14.7	n/a
Overall rating out of 10	n/a	6.9	5.1	4.1	5.5	n/a
Pigeon Lake [Public] Falun			Gr 12 Enrollment: 50			
ESL (%): n/a	Special needs (%): 13.5		Alt. French (%): 0.0		2016-17 Last 5 Years	
Actual rating vs predicted based			Rank: 170/262 179/225			
on parents' avg. inc. of \$ n/a: n/a			Rank: 170/262 179/225			
Academic Performance	2013	2014	2015	2016	2017	Trend
Average exam mark	57.2	63.4	62.9	63.1	65.3	▲
Percentage of exams failed	36.8	18.4	18.0	18.4	16.5	—
School vs exam mark difference	11.2	9.5	10.0	8.4	9.3	▲
Language Arts gender gap	n/a	n/a	n/a	n/a	F 0.3	n/a
Math gender gap	n/a	n/a	n/a	n/a	F 9.7	n/a
Courses taken per student	n/a	n/a	n/a	2.5	2.7	n/a
Diploma completion rate	76.5	88.2	76.5	73.5	81.3	—
Delayed advancement rate	26.9	29.3	25.5	31.0	24.8	—
Overall rating out of 10	3.7	5.8	5.4	5.2	5.5	—
St. Jerome's [Separate] Vermilion			Gr 12 Enrollment: 33			
ESL (%): 10.8	Special needs (%): 15.3		Alt. French (%): 0.0		2016-17 Last 5 Years	
Actual rating vs predicted based			Rank: 45/262 43/225			
on parents' avg. inc. of \$ n/a: n/a			Rank: 45/262 43/225			
Academic Performance	2013	2014	2015	2016	2017	Trend
Average exam mark	66.3	64.2	66.2	69.5	66.9	—
Percentage of exams failed	13.3	17.6	19.0	9.4	17.6	—
School vs exam mark difference	7.5	6.5	6.9	4.4	9.3	—
Language Arts gender gap	n/a	n/a	n/a	n/a	n/a	n/a
Math gender gap	n/a	n/a	n/a	n/a	n/a	n/a
Courses taken per student	n/a	n/a	n/a	3.8	4.6	n/a
Diploma completion rate	93.9	94.1	92.9	96.6	100.0	—
Delayed advancement rate	2.9	5.8	4.6	4.6	6.6	—
Overall rating out of 10	7.3	7.0	7.2	8.3	7.4	—
Buck Mountain [Public] Buck Lake			Gr 12 Enrollment: 28			
ESL (%): n/a	Special needs (%): 9.7		Alt. French (%): 0.0		2016-17 Last 5 Years	
Actual rating vs predicted based			Rank: 215/262 184/225			
on parents' avg. inc. of \$ n/a: n/a			Rank: 215/262 184/225			
Academic Performance	2013	2014	2015	2016	2017	Trend
Average exam mark	59.1	67.5	60.0	58.1	59.9	—
Percentage of exams failed	24.5	9.1	16.9	25.3	25.7	—
School vs exam mark difference	9.0	9.8	7.8	11.9	11.4	—
Language Arts gender gap	n/a	n/a	n/a	n/a	n/a	n/a
Math gender gap	n/a	n/a	n/a	n/a	n/a	n/a
Courses taken per student	n/a	n/a	n/a	3.0	3.1	n/a
Diploma completion rate	81.3	66.7	77.8	78.3	88.9	—
Delayed advancement rate	23.1	37.9	25.1	26.9	n/a	n/a
Overall rating out of 10	5.1	5.7	5.3	4.1	4.7	—
Wetaskiwin [Public] Wetaskiwin			Gr 12 Enrollment: 226			
ESL (%): 2.5	Special needs (%): 18.9		Alt. French (%): 0.0		2016-17 Last 5 Years	
Actual rating vs predicted based			Rank: 187/262 118/225			
on parents' avg. inc. of \$ n/a: n/a			Rank: 187/262 118/225			
Academic Performance	2013	2014	2015	2016	2017	Trend
Average exam mark	66.2	66.9	68.0	67.7	65.1	—
Percentage of exams failed	15.0	11.7	11.0	12.3	15.0	—
School vs exam mark difference	3.7	3.9	2.7	3.4	3.0	▲
Language Arts gender gap	n/a	n/a	n/a	M 1.2	F 1.1	n/a
Math gender gap	n/a	n/a	n/a	F 1.6	F 1.7	n/a
Courses taken per student	n/a	n/a	n/a	2.9	2.6	n/a
Diploma completion rate	71.8	71.4	70.9	68.7	67.7	▼
Delayed advancement rate	33.2	34.1	35.4	37.4	39.1	—
Overall rating out of 10	6.3	6.6	6.7	6.2	5.3	—
Viking [Public] Viking			Gr 12 Enrollment: 31			
ESL (%): 2.4	Special needs (%): 12.5		Alt. French (%): 0.0		2016-17 Last 5 Years	
Actual rating vs predicted based			Rank: 144/262 102/225			
on parents' avg. inc. of \$ n/a: n/a			Rank: 144/262 102/225			
Academic Performance	2013	2014	2015	2016	2017	Trend
Average exam mark	65.1	66.4	59.8	66.6	60.8	—
Percentage of exams failed	15.4	10.7	26.0	14.8	22.9	—
School vs exam mark difference	10.6	8.5	12.7	9.4	15.1	—
Language Arts gender gap	n/a	n/a	n/a	n/a	M 6.1	n/a
Math gender gap	n/a	n/a	n/a	n/a	F 2.0	n/a
Courses taken per student	n/a	n/a	n/a	4.4	4.5	n/a
Diploma completion rate	100.0	96.3	93.1	89.7	93.1	▼
Delayed advancement rate	0.0	19.3	6.7	18.8	12.9	—
Overall rating out of 10	6.9	7.1	5.2	7.0	5.9	—
Frank Maddock [Public] Drayton Valley			Gr 12 Enrollment: 145			
ESL (%): 1.6	Special needs (%): 9.2		Alt. French (%): 0.0		2016-17 Last 5 Years	
Actual rating vs predicted based			Rank: 161/262 146/225			
on parents' avg. inc. of \$ n/a: n/a			Rank: 161/262 146/225			
Academic Performance	2013	2014	2015	2016	2017	Trend
Average exam mark	63.5	63.7	64.5	64.1	62.3	—
Percentage of exams failed	18.1	17.2	15.5	16.3	18.1	—
School vs exam mark difference	6.0	5.6	7.1	6.5	7.9	—
Language Arts gender gap	n/a	n/a	n/a	F 4.8	F 3.2	n/a
Math gender gap	n/a	n/a	n/a	F 4.7	F 6.8	n/a
Courses taken per student	n/a	n/a	n/a	3.1	3.4	n/a
Diploma completion rate	79.0	79.5	81.1	84.4	83.7	▲
Delayed advancement rate	29.1	27.9	26.2	23.5	25.0	▲
Overall rating out of 10	5.7	6.0	5.9	5.9	5.6	—
Wainwright [Public] Wainwright			Gr 12 Enrollment: 52			
ESL (%): 0.0	Special needs (%): 16.9		Alt. French (%): 0.0		2016-17 Last 5 Years	
Actual rating vs predicted based			Rank: 170/262 169/225			
on parents' avg. inc. of \$ n/a: n/a			Rank: 170/262 169/225			
Academic Performance	2013	2014	2015	2016	2017	Trend
Average exam mark	63.1	63.4	61.2	58.3	63.7	—
Percentage of exams failed	16.7	18.0	22.0	27.0	18.9	—
School vs exam mark difference	9.3	10.5	10.8	10.8	9.8	—
Language Arts gender gap	n/a	n/a	n/a	F 2.6	F 0.2	n/a
Math gender gap	n/a	n/a	n/a	F 1.6	M 11.4	n/a
Courses taken per student	n/a	n/a	n/a	3.5	3.1	n/a
Diploma completion rate	74.7	85.2	80.7	83.6	83.7	—
Delayed advancement rate	23.5	18.3	24.3	16.7	17.6	—
Overall rating out of 10	5.3	5.8	4.8	5.0	5.5	—
Holy Trinity Academy [Separate] Drayton Valley			Gr 12 Enrollment: 28			
ESL (%): 11.0	Special needs (%): 10.2		Alt. French (%): 0.0		2016-17 Last 5 Years	
Actual rating vs predicted based			Rank: 99/262 105/225			
on parents' avg. inc. of \$ n/a: n/a			Rank: 99/262 105/225			
Academic Performance	2013	2014	2015	2016	2017	Trend
Average exam mark	61.4	61.2	67.6	61.0	63.0	—
Percentage of exams failed	20.7	23.4	12.5	23.1	13.5	—
School vs exam mark difference	8.3	6.8	4.7	8.3	7.6	—
Language Arts gender gap	n/a	n/a	n/a	M 1.3	n/a	n/a
Math gender gap	n/a	n/a	n/a	F 5.8	n/a	n/a
Courses taken per student	n/a	n/a	n/a	3.9	3.4	n/a
Diploma completion rate	77.4	91.7	100.0	82.6	92.0	—
Delayed advancement rate	23.7	16.4	0.0	n/a	16.2	n/a
Overall rating out of 10	5.1	6.1	7.7	5.9	6.5	—

How does your school stack up?

Important notes to the rankings

In this table, schools are ranked (on the left hand side of the page) in descending order (from 1 to 259) according to their academic performance as measured by the Overall rating out of 10 (shown on the right hand side of the table) for the school year 2016/2017. Each school's five-year average ranking and Overall rating out of 10 are also listed. The higher the overall rating (out of 10), the higher the rank awarded to the school. Where schools tied in the overall rating, they were awarded the same rank. Where less than five years of data were available, "n/a" appears in the table.

Not all the province's high schools are included in the tables or the ranking. Excluded are schools at which fewer than 10 regular day students were enrolled in grade-12 and schools that did not

generate a sufficiently large set of student data to enable the calculation of an Overall rating out of 10. Also excluded from the ratings and rankings are: online learning centres, home-schooling centres, certain alternative schools, and adult education schools.

The exclusion of a school from the Report Card should in no way be construed as a judgement of the school's effectiveness.

IMPORTANT: In order to get the most from the *Report Card*, readers should consult the complete table of results for each school of interest. By considering several years of results—rather than just a school's rank in the most recent year—readers can get a better idea of how the school is likely to perform in the future

---Rank---			School name	City	-Overall rating-	
2016/2017	Last 5 yrs	Trend			2016/2017	Last 5 yrs
1	1	—	Old Scona	Edmonton	10.0	10.0
1	1	—	Webber	Calgary	10.0	10.0
1	3	—	Rundle College	Calgary	10.0	9.9
1	n/a	n/a	Calgary French & International	Calgary	10.0	n/a
5	4	—	West Island College	Calgary	9.3	9.5
5	7	▲	Archbishop MacDonald	Edmonton	9.3	8.6
7	7	▲	Foundations for the Future (FFCA)	Calgary	9.2	8.6
8	12	▲	Olds Koinonia	Olds	9.1	8.2
9	18	▲	Millwoods Christian	Edmonton	9.0	8.0
10	6	—	Bearspaw Christian	Calgary	8.9	8.7
11	16	—	William Aberhart	Calgary	8.8	8.1
12	12	▲	Springbank	Calgary	8.7	8.2
13	12	—	Strathcona Christian	Sherwood Park	8.5	8.2
14	7	—	Western Canada	Calgary	8.4	8.6
14	12	—	Olds	Olds	8.4	8.2
14	n/a	n/a	Our Lady of the Snows	Canmore	8.4	n/a
17	7	—	Westmount	Calgary	8.3	8.6
17	24	▲	Rundle College Academy	Calgary	8.3	7.8
17	45	▲	Lillian Osborne	Edmonton	8.3	7.3
17	n/a	n/a	Calgary Academy Collegiate	Calgary	8.3	n/a

---Rank---			School name	City	-Overall rating-	
2016/2017	Last 5 yrs	Trend			2016/2017	Last 5 yrs
21	5	—	Strathcona-Tweedsmuir	Okotoks	8.2	8.8
21	30	—	J H Picard	Edmonton	8.2	7.7
21	30	▲	Strathcona	Edmonton	8.2	7.7
21	45	—	St. Gabriel the Archangel	Chestermere	8.2	7.3
21	67	▲	Mallaig	Mallaig	8.2	6.8
26	11	▼	Sir Winston Churchill	Calgary	8.1	8.5
26	n/a	n/a	Ste Marguerite d'Youville	St. Albert	8.1	n/a
28	16	—	Holy Trinity Academy	Okotoks	8.0	8.1
28	105	▲	Innisfail	Innisfail	8.0	6.3
30	30	▲	Ernest Manning	Calgary	7.9	7.7
30	35	—	Harry Ainlay	Edmonton	7.9	7.6
32	24	—	Ardrossan	Ardrossan	7.8	7.8
32	36	—	Archbishop Jordan	Sherwood Park	7.8	7.5
34	49	—	Master's College	Calgary	7.7	7.2
34	n/a	n/a	St. Dominic	Rocky Mountain House	7.7	n/a
36	21	—	Dr. E. P. Scarlett	Calgary	7.6	7.9
36	30	—	Bishop Carroll	Calgary	7.6	7.7
36	36	—	St. Francis	Calgary	7.6	7.5
36	49	—	Hugh Sutherland	Carstairs	7.6	7.2
40	24	—	Beaumont	Beaumont	7.5	7.8

---Rank---				-Overall rating-				---Rank---				-Overall rating-		
2016/	Last		School name	City	2016/	Last		2016/	Last		School name	City	2016/	Last
2017	5	Trend			2017	5		2017	5	Trend			2017	5
40	24	—	Centennial	Calgary	7.5	7.8		99	45	▼	Magrath	Magrath	6.5	7.3
40	24	—	Didsbury	Didsbury	7.5	7.8		99	55	—	St. Martin De Porres	Airdrie	6.5	7.0
40	24	—	Immanuel Christian	Lethbridge	7.5	7.8		99	55	—	W. G. Murdoch	Crossfield	6.5	7.0
40	36	—	Henry Wise Wood	Calgary	7.5	7.5		99	67	—	Crescent Heights	Calgary	6.5	6.8
45	21	▼	W. R. Myers	Taber	7.4	7.9		99	67	▼	Vimy Ridge	Edmonton	6.5	6.8
45	30	—	Christ The King	Leduc	7.4	7.7		99	73	—	Assumption	Cold Lake	6.5	6.7
45	43	—	St. Jerome's	Vermilion	7.4	7.4		99	83	—	Memorial	Stony Plain	6.5	6.6
45	83	—	Vegreville	Vegreville	7.4	6.6		99	92	—	Bishop Grandin	Calgary	6.5	6.5
49	36	—	F G Miller	Elk Point	7.3	7.5		99	105	—	Holy Trinity Academy	Drayton Valley	6.5	6.3
49	43	—	Bev Facey	Sherwood Park	7.3	7.4		99	105	—	Ross Sheppard	Edmonton	6.5	6.3
49	55	—	South Central	Oyen	7.3	7.0		99	118	—	Archbishop O'Leary	Edmonton	6.5	6.2
49	67	▲	Notre Dame	Calgary	7.3	6.8		99	131	—	Central High Sedgewick	Sedgewick	6.5	6.0
49	83	—	Rosemary	Rosemary	7.3	6.6		111	125	—	Glenmary	Peace River	6.4	6.1
49	n/a	n/a	Edmonton Islamic	Edmonton	7.3	n/a		112	55	—	Central Alberta Christian	Lacombe	6.3	7.0
49	n/a	n/a	Mother Margaret Mary	Edmonton	7.3	n/a		112	67	—	Spruce Grove	Spruce Grove	6.3	6.8
56	21	—	Calgary Christian	Calgary	7.2	7.9		112	83	▼	Highwood	High River	6.3	6.6
56	36	—	St. Peter the Apostle	Spruce Grove	7.2	7.5		112	102	▼	Holy Trinity	Edmonton	6.3	6.4
56	51	—	Bishop O'Byrne	Calgary	7.2	7.1		112	105	—	Notre Dame	Red Deer	6.3	6.3
56	51	—	Cochrane	Cochrane	7.2	7.1		112	125	—	Strathmore	Strathmore	6.3	6.1
56	51	—	John G Diefenbaker	Calgary	7.2	7.1		112	138	—	Bellerose	St. Albert	6.3	5.9
56	55	—	Paul Kane	St. Albert	7.2	7.0		112	146	▲	Jasper Place	Edmonton	6.3	5.8
56	73	—	Austin O'Brien	Edmonton	7.2	6.7		112	154	—	Mayerthorpe	Mayerthorpe	6.3	5.6
56	102	—	F. P. Walshe	Fort Macleod	7.2	6.4		112	159	—	Blessed Sacrament	Wainwright	6.3	5.5
56	195	▲	Trochu Valley	Trochu	7.2	4.8		112	166	▲	Grimshaw	Grimshaw	6.3	5.4
65	18	—	St. Timothy	Cochrane	7.1	8.0		112	n/a	n/a	Calvin Christian	Coalhurst	6.3	n/a
65	45	—	Bawlf	Bawlf	7.1	7.3		124	51	—	Holy Cross	Strathmore	6.2	7.1
65	83	—	Calgary Academy	Calgary	7.1	6.6		124	62	▼	Onoway	Onoway	6.2	6.9
65	92	—	Edmonton Christian	Edmonton	7.1	6.5		124	73	▼	Canmore Collegiate	Canmore	6.2	6.7
69	73	—	St. Francis Xavier	Edmonton	7.0	6.7		124	83	▼	Louis St. Laurent	Edmonton	6.2	6.6
69	73	—	Tofield	Tofield	7.0	6.7		124	92	—	Kate Andrews	Coaldale	6.2	6.5
69	92	—	Rimbey	Rimbey	7.0	6.5		124	105	—	Airdrie Koinonia Christian	Airdrie	6.2	6.3
69	92	—	W P Wagner	Edmonton	7.0	6.5		124	105	—	Leduc	Leduc	6.2	6.3
69	172	▲	Calgary Islamic	Calgary	7.0	5.2		124	118	—	Archbishop Oscar Romero	Edmonton	6.2	6.2
74	62	—	McCoy	Medicine Hat	6.9	6.9		124	n/a	n/a	Morrin	Morrin	6.2	n/a
74	138	—	St. Mary's	Calgary	6.9	5.9		133	92	—	Lord Beaverbrook	Calgary	6.1	6.5
74	n/a	n/a	Spruce View	Spruce View	6.9	n/a		133	105	—	Holy Redeemer	Edson	6.1	6.3
77	55	—	Hunting Hills	Red Deer	6.8	7.0		133	146	—	Lacombe	Lacombe	6.1	5.8
77	62	—	Eagle Butte	Dunmore	6.8	6.9		133	n/a	n/a	Forestburg	Forestburg	6.1	n/a
77	92	—	Willow Creek	Claresholm	6.8	6.5		133	n/a	n/a	Robert Thirsk	Calgary	6.1	n/a
77	105	▲	Raymond	Raymond	6.8	6.3		133	n/a	n/a	St. Anthony's	Drumheller	6.1	n/a
77	146	—	Notre Dame	Bonnyville	6.8	5.8		139	138	—	Sexsmith	Sexsmith	6.0	5.9
77	n/a	n/a	Bowden Grandview	Bowden	6.8	n/a		139	151	—	Lethbridge Collegiate	Lethbridge	6.0	5.7
77	n/a	n/a	Parkland Immanuel	Edmonton	6.8	n/a		139	169	—	McNally	Edmonton	6.0	5.3
77	n/a	n/a	Provost	Provost	6.8	n/a		139	179	—	Our Lady of Mount Pleasant	Camrose	6.0	5.1
85	55	—	St. Paul	St. Paul	6.7	7.0		139	n/a	n/a	Holy Trinity	Fort McMurray	6.0	n/a
85	73	—	Foothills	Okotoks	6.7	6.7		144	92	—	J. R. Robson	Vermilion	5.9	6.5
85	83	—	Cold Lake	Cold Lake	6.7	6.6		144	102	—	Viking	Viking	5.9	6.4
85	83	—	Three Hills	Three Hills	6.7	6.6		144	105	▼	Parkview Adventist	Lacombe	5.9	6.3
85	118	▲	Salisbury	Sherwood Park	6.7	6.2		144	138	—	H. J. Cody	Sylvan Lake	5.9	5.9
85	195	▲	David Thompson	Condor	6.7	4.8		144	151	—	Thorhild Central	Thorhild	5.9	5.7
85	n/a	n/a	Father Patrick Mercredi	Fort McMurray	6.7	n/a		144	n/a	n/a	County Central	Vulcan	5.9	n/a
92	18	▼	Vauxhall	Vauxhall	6.6	8.0		150	73	▼	National Sport	Calgary	5.8	6.7
92	36	▼	Edge	Calgary	6.6	7.5		150	105	▼	Chestermere	Calgary	5.8	6.3
92	36	▼	Heritage Christian	Calgary	6.6	7.5		150	131	—	Barrhead	Barrhead	5.8	6.0
92	73	—	Bow Valley	Cochrane	6.6	6.7		150	146	—	Calmar	Calmar	5.8	5.8
92	105	—	St. Mary's	Vegreville	6.6	6.3		150	172	—	William E Hay	Stettler	5.8	5.2
92	203	—	Caroline	Caroline	6.6	4.6		150	206	▲	Roland Michener	Slave Lake	5.8	4.4
92	n/a	n/a	Clear Water	Calgary	6.6	n/a		156	62	▼	Queen Elizabeth	Calgary	5.7	6.9

---Rank---				-Overall rating-				---Rank---				-Overall rating-	
2016/	Last			2016/	Last	2016/	Last	2016/	Last	2016/	Last	2016/	Last
2017	5	Trend	School name	2017	5	2017	5	2017	5	2017	5	2017	5
			City										
156	92	—	Crowsnest	Coleman	5.7	6.5	210	138	—	St. Joseph's	Brooks	4.8	5.9
156	125	—	Richard F Staples	Westlock	5.7	6.1	210	172	—	Fort Saskatchewan	Fort Saskatchewan	4.8	5.2
156	159	—	Bassano	Bassano	5.7	5.5	210	172	—	Lamont	Lamont	4.8	5.2
156	172	—	Peace Wapiti Academy	Grande Prairie	5.7	5.2	210	179	—	Banff	Banff	4.8	5.1
161	62	—	Foothills Academy	Calgary	5.6	6.9	210	198	—	Paul Rowe	Manning	4.8	4.7
161	67	▼	George McDougall	Airdrie	5.6	6.8	215	83	▼	Redwater	Redwater	4.7	6.6
161	118	—	Acme	Acme	5.6	6.2	215	184	—	Buck Mountain	Buck Lake	4.7	5.0
161	131	—	Fairview	Fairview	5.6	6.0	215	184	▼	Lester B. Pearson	Calgary	4.7	5.0
161	138	▼	Parkland	Edson	5.6	5.9	215	190	—	St. Joseph	Grande Prairie	4.7	4.9
161	146	—	Frank Maddock	Drayton Valley	5.6	5.8	215	198	—	Cardston	Cardston	4.7	4.7
161	154	—	Bonnyville	Bonnyville	5.6	5.6	215	198	—	Ponoka	Ponoka	4.7	4.7
161	166	▲	M. E. LaZerte	Edmonton	5.6	5.4	215	n/a	n/a	Charles Spencer	Grande Prairie	4.7	n/a
161	198	—	Father Lacombe	Calgary	5.6	4.7	222	131	—	Matthew Halton	Pincher Creek	4.6	6.0
170	73	▼	Coronation	Coronation	5.5	6.7	222	131	▼	Sundre	Sundre	4.6	6.0
170	118	▼	Sturgeon	Namao	5.5	6.2	222	204	—	Hillside	Valleyview	4.6	4.5
170	138	—	La Crete	La Crete	5.5	5.9	222	212	—	Plamondon	Plamondon	4.6	3.9
170	159	—	Delburne Centralized	Delburne	5.5	5.5	226	212	—	Drumheller	Drumheller	4.5	3.9
170	169	—	Wainwright	Wainwright	5.5	5.3	226	215	▲	High Level	High Level	4.5	3.8
170	179	—	Pigeon Lake	Falun	5.5	5.1	226	n/a	n/a	St. Michael's	Pincher Creek	4.5	n/a
170	190	▲	Bishop McNally	Calgary	5.5	4.9	229	159	—	St. Mary's	Taber	4.4	5.5
170	n/a	n/a	Breton	Breton	5.5	n/a	229	179	—	Lindsay Thurber	Red Deer	4.4	5.1
178	105	—	J. T. Foster	Nanton	5.4	6.3	229	206	—	Grande Prairie	Grande Prairie	4.4	4.4
178	105	—	Picture Butte	Picture Butte	5.4	6.3	229	206	—	J A Williams	Lac La Biche	4.4	4.4
178	125	▼	Catholic Central	Lethbridge	5.4	6.1	233	159	▼	Georges P Vanier	Donnelly	4.3	5.5
178	125	▼	Central Memorial	Calgary	5.4	6.1	233	n/a	n/a	Koinonia Christian	Red Deer	4.3	n/a
178	125	—	John Maland	Devon	5.4	6.1	235	154	▼	St. Joseph	Whitecourt	4.2	5.6
178	131	▼	Bert Church	Airdrie	5.4	6.0	235	n/a	n/a	Northstar	Didsbury	4.2	n/a
178	211	—	Spirit River	Spirit River	5.4	4.0	237	198	—	Peace River	Peace River	4.1	4.7
178	n/a	n/a	Mannville	Mannville	5.4	n/a	238	n/a	n/a	H. A. Kostash	Smoky Lake	4.0	n/a
178	n/a	n/a	Westwood	Fort McMurray	5.4	n/a	239	210	—	Brooks	Brooks	3.9	4.1
187	118	—	Wetaskiwin	Wetaskiwin	5.3	6.2	240	204	▼	Beaverlodge	Beaverlodge	3.7	4.5
187	138	▼	Will Sinclair	Rocky Mountain House	5.3	5.9	240	215	—	Boyle	Boyle	3.7	3.8
187	159	—	Oilfields	Black Diamond	5.3	5.5	242	172	▼	Winston Churchill	Lethbridge	3.6	5.2
187	184	—	John Paul II	Fort Saskatchewan	5.3	5.0	242	219	▲	J Percy Page	Edmonton	3.6	3.0
187	n/a	n/a	W.H. Croxford	Airdrie	5.3	n/a	244	190	▼	St. Augustine	Ponoka	3.5	4.9
192	73	▼	Notre Dame Collegiate	High River	5.2	6.7	244	212	—	James Fowler	Calgary	3.5	3.9
192	118	▼	Bowness	Calgary	5.2	6.2	244	218	—	Forest Lawn	Calgary	3.5	3.5
192	154	—	Hilltop	Whitecourt	5.2	5.6	247	184	—	Kitscoty	Kitscoty	3.4	5.0
192	184	—	Glendon	Glendon	5.2	5.0	248	195	—	Ryley	Ryley	3.2	4.8
192	190	—	Harry Collinge	Hinton	5.2	4.9	249	209	▼	Duchess	Duchess	2.9	4.3
192	n/a	n/a	Gateway Christian	Red Deer	5.2	n/a	249	220	—	Queen Elizabeth	Edmonton	2.9	2.9
198	131	▼	Jasper	Jasper	5.1	6.0	251	217	—	Grande Cache	Grande Cache	2.6	3.7
198	151	—	Prairie Christian	Three Hills	5.1	5.7	252	221	—	St. Gabriel Cyber	Red Deer	2.5	2.5
198	159	—	Chinook	Lethbridge	5.1	5.5	252	222	—	Eastglen	Edmonton	2.5	2.2
198	172	—	J. C. Charyk Hanna	Hanna	5.1	5.2	254	n/a	n/a	St. Mary	Westlock	2.3	n/a
198	179	—	Headway	Edmonton	5.1	5.1	255	n/a	n/a	Fort McMurray	Fort McMurray	2.0	n/a
198	n/a	n/a	New Sarepta	New Sarepta	5.1	n/a	256	n/a	n/a	Central	Medicine Hat	1.3	n/a
204	154	▼	Medicine Hat	Medicine Hat	5.0	5.6	257	222	▼	E W Pratt	High Prairie	0.8	2.2
204	169	▼	Edwin Parr	Athabasca	5.0	5.3	258	n/a	n/a	St. John Bosco	Grande Prairie	0.4	n/a
204	184	—	Victoria	Edmonton	5.0	5.0	259	224	—	Ashmont	Ashmont	0.0	0.5
207	92	▼	Senator Gershaw	Bow Island	4.9	6.5	259	225	—	Braemar	Edmonton	0.0	0.2
207	166	▼	Camrose	Camrose	4.9	5.4	259	n/a	n/a	Amiskwacyi	Edmonton	0.0	n/a
207	190	—	Crescent Heights	Medicine Hat	4.9	4.9	259	n/a	n/a	Hope Christian	Champion	0.0	n/a

Appendix: Calculating the Overall rating out of 10

The *Overall rating out of 10* is intended to answer the question, “In general, how is the school doing, academically compared with other schools in the *Report Card*?” The following is a simplified description of the procedure used to convert the raw indicator data into the *Overall rating out of 10*.

- 1 Course by course, the average diploma examination marks and failure rates for each school were standardized by calculating Z , which is defined by:

$$Z = (X - \mu) / \sigma$$

where X is the individual school’s result, μ is the mean of the all-schools distribution of results, and σ is the standard deviation of the same all-schools distribution.

- 2 The *School vs exam mark difference* for each course was calculated using the raw data and then standardized as described in step 1 above.
- 3 The course-by-course standardized data were then aggregated to produce weighted average indicator values. The weighting used was the number of student course completions in each course at the school relative to the total number of student course completions at the school.
- 4 These weighted average results were then re-standardized.
- 5 The *Gender gap* indicators were calculated using the raw data and then standardized as described in step 1 above.
- 6 The *Courses taken per student*, *Diploma completion rate*, and *Delayed advancement rate* indicators were calculated using the raw data and then standardized as described in step 1 above.
- 7 The eight standardized indicator results were then combined to produce a weighted average summary standardized score for the school. The weightings used in these calculations were *Average exam mark*—20%, *Percentage of exams failed*—20%, *School vs exam mark*—10%, *English 30 gender gap*—5%, *Math 30 gender gap*—5%, *Courses taken per student*—20%, *Diploma completion rate*—10%, and *Delayed advancement rate*—10%. In instances when fewer than two *Gender gap* indicators could be calculated, *Gender gap* results did not contribute to the *Overall rating*. In such instances, the *School vs exam mark difference* was weighted at 20%. Similarly, when the *Delayed advancement rate* could not be calculated, the *Diploma completion rate* was weighted at 20%.
- 8 This summary standardized score was re-standardized.

This standardized score was converted into an *Overall rating* between 0 and 10 as follows:

9 The maximum and minimum standardized scores were set at 2.2 and -3.29 respectively. Scores equal to, or greater than, 2.2 received the highest overall rating of 10. This cut-off was chosen because it allows more than one school in a given year to be awarded 10 out of 10. Scores of equal to, or less than, -3.29 received the lowest overall rating of 0. Schools with scores below -3.29 are likely to be outliers, a statistical term used to denote members of a population that appear to have characteristics substantially different from the rest of the population. We chose, therefore, to set the minimum score so as to disregard such extreme differences.

10 The resulting standardized scores were converted into *Overall ratings* according to the formula:

$$OR = \mu + (\sigma * StanScore),$$

where *OR* is the resulting *Overall rating*, μ is the average calculated according to the formula:

$$\mu = (OR_{min} - 10 (Z_{min} / Z_{max})) / (1 - (Z_{min} / Z_{max})),$$

where σ is the standard deviation calculated according to the formula:

$$\sigma = (10 - \mu) / Z_{max},$$

and StanScore is the standardized score calculated in (8) above and adjusted as required for minimum and maximum values as noted in (9) above. As noted in (9) above, OR_{min} equals zero, Z_{min} equals -3.29 ; and Z_{max} equals 2.2.

11 Finally, the derived *Overall rating* is rounded to one place of the decimal to reflect the significant number of places of the decimal in the original raw data.

Note that the *Overall rating out of 10*, based as it is on standardized scores, is a relative rating. That is, in order for a school to show improvement in its *Overall rating*, it must improve more than the average. If it improves but at a rate less than the average, it will show a decline in its rating.

About the Authors

Peter Cowley

Peter Cowley is the Director of the Centre for School Performance Studies at the Fraser Institute. He graduated from the University of British Columbia with a B.Comm. in 1974. Shortly thereafter, he began a long career in marketing and general management in several sectors. During his assignments in general management, process improvement was a special focus and interest. In 1994, Mr Cowley independently wrote and published *The Parent's Guide*, a popular handbook for parents of British Columbia's secondary-school students. *The Parent's Guide* web site replaced the handbook in 1995. In 1998, Mr Cowley was co-author of the Fraser Institute's *A Secondary Schools Report Card for British Columbia*, the first of the Institute's continuing series of annual reports on school performance. This was followed by *The 1999 Report Card on British Columbia's Secondary Schools, Boys, Girls, and Grades: Academic Gender Balance in British Columbia's Secondary Schools*, and *The 1999 Report Card on Alberta's High Schools*. Since then, Mr Cowley has co-authored all of the Institute's annual *Report Cards*. Annual editions now include *Report Cards* on elementary and secondary schools in British Columbia, Alberta, and Ontario and on secondary schools in Quebec. He continues his research on school performance issues for the Fraser Institute.

Angela MacLeod

Angela MacLeod is a Senior Policy Analyst at the Fraser Institute, conducting research for the Barbara Mitchell Centre for Improvement in Education, and the Centre for School Performance Studies. After completing a Bachelor of Business Administration from Acadia University, she spent time working in banking and management before pursuing a Master of Public Policy from the University of Calgary. The focus of her graduate studies was social and economic policy, and her final paper, *Noble Frustrations: The Many Practical Problems with Municipal Poverty Initiatives*, was subsequently published by the Manning Foundation. She was formerly the executive director of a school-choice advocacy organization and is passionate about improving K-12 education across the country. She is the co-author of numerous education policy studies including *Where Our Students Are Educated: Measuring Student Enrolment in Canada, 2017* and *Comparing the Family Income of Students in Alberta's Independent and Public Schools*.

Publishing information

Distribution

These publications are available from <http://www.fraserinstitute.org> in Portable Document Format (PDF) and can be read with Adobe Acrobat® 7 or Adobe Reader®, versions 7 or later. Adobe Reader® X, the most recent version, is available free of charge from Adobe Systems Inc. at <http://get.adobe.com/reader/>. Readers who have trouble viewing or printing our PDF files using applications from other manufacturers (e.g., Apple's Preview) should use Reader® or Acrobat®.

Ordering publications

For information about ordering the printed publications of the Fraser Institute, please contact the publications coordinator:

- ✎ via e-mail: sales@fraserinstitute.org
- ✎ via telephone: 604.688.0221 ext. 580
or, toll free, 1.800.665.3558 ext. 580
- ✎ via fax: 604.688.8539.

Media

For media enquiries, please contact our Communications Department:

- ✎ via e-mail: communications@fraserinstitute.org
- ✎ via telephone: 604.714.4582

In Toronto, contact our media specialist:

- ✎ via telephone at 416.363.6575, ext. 238.

Copyright

Copyright © 2018 by the Fraser Institute. All rights reserved. No part of this publication may be reproduced in any manner whatsoever without written permission except in the case of brief passages quoted in critical articles and reviews.

ISSN / ISBN

- ✎ 1707–2395 Studies in Education Policy
(English online edition)
- ✎ 1492–1863 Studies in Education Policy
(English print edition)

Date of issue

2018

Typesetting

Nick Murphy

Cover design

Bill Ray

Images for cover

- ✎ Boys in school ©Steve Stone; iStock
- ✎ Girl solving a math problem on blackboard ©Bart Coenders; iStock
- ✎ Attentive reading ©Grigory Bibikov; iStock
- ✎ Library series ©Willie B. Thomas; iStock
- ✎ 8-year old schoolgirl doing homework ©mamahoooba; iStock
- ✎ Student working in class ©Bonnie Jacobs; iStock

Supporting the Fraser Institute

To learn how to support the Fraser Institute, please contact us

- ✎ via post: Development Department, Fraser Institute
Fourth Floor, 1770 Burrard Street
Vancouver, British Columbia, V6J 3G7 Canada
- ✎ via telephone from Canada, toll-free: 1.800.665.3558 ext. 548
- ✎ via e-mail: development@fraserinstitute.org
- ✎ or visit our webpage: <<http://www.fraserinstitute.org/support-us/overview.aspx>>.

Purpose, funding, & independence

The Fraser Institute provides a useful public service. We report objective information about the economic and social effects of current public policies, and we offer evidence-based research and education about policy options that can improve the quality of life.

The Institute is a non-profit organization. Our activities are funded by charitable donations, unrestricted grants, ticket sales, and sponsorships from events, the licensing of products for public distribution, and the sale of publications.

All research is subject to rigorous review by external experts, and is conducted and published separately from the Institute's Board of Directors and its donors.

The opinions expressed by the authors are those of the individuals themselves, and do not necessarily reflect those of the Institute, its Board of Directors, its donors and supporters, or its staff. This publication in no way implies that the Fraser Institute, its directors, or staff are in favour of, or oppose the passage of, any bill; or that they support or oppose any particular political party or candidate.

As a healthy part of public discussion among fellow citizens who desire to improve the lives of people through better public policy, the Institute welcomes evidence-focused scrutiny of the research we publish, including verification of data sources, replication of analytical methods, and intelligent debate about the practical effects of policy recommendations.

About the Fraser Institute

Our mission is to improve the quality of life for Canadians, their families and future generations by studying, measuring and broadly communicating the effects of government policies, entrepreneurship and choice on their well-being.

Notre mission consiste à améliorer la qualité de vie des Canadiens et des générations à venir en étudiant, en mesurant et en diffusant les effets des politiques gouvernementales, de l'entrepreneuriat et des choix sur leur bien-être.

Peer review—validating the accuracy of our research

The Fraser Institute maintains a rigorous peer review process for its research. New research, major research projects, and substantively modified research conducted by the Fraser Institute are reviewed by a minimum of one internal expert and two external experts. Reviewers are expected to have a recognized expertise in the topic area being addressed. Whenever possible, external review is a blind process.

Commentaries and conference papers are reviewed by internal experts. Updates to previously reviewed research or new editions of previously reviewed research are not reviewed unless the update includes substantive or material changes in the methodology.

The review process is overseen by the directors of the Institute's research departments who are responsible for ensuring all research published by the Institute passes through the appropriate peer review. If a dispute about the recommendations of the reviewers should arise during the Institute's peer review process, the Institute has an Editorial Advisory Board, a panel of scholars from Canada, the United States, and Europe to whom it can turn for help in resolving the dispute.

Editorial Board

Members

Prof. Terry L. Anderson	Prof. Stephen Easton	Dr. Jerry Jordan
Prof. Robert Barro	Prof. J.C. Herbert Emery	Prof. Ross McKittrick
Prof. Jean-Pierre Centi	Prof. Jack L. Granatstein	Prof. Michael Parkin
Prof. John Chant	Prof. Herbert G. Grubel	Prof. Friedrich Schneider
Prof. Bev Dahlby	Prof. James Gwartney	Prof. Lawrence B. Smith
Prof. Erwin Diewert	Prof. Ronald W. Jones	Mr. Vito Tanzi

Past members

Prof. Armen Alchian*	Prof. Friedrich A. Hayek* †	Prof. George Stigler* †
Prof. Michael Bliss*	Prof. H.G. Johnson*	Sir Alan Walters*
Prof. James M. Buchanan* †	Prof. F.G. Pennance*	Prof. Edwin G. West*

* deceased; † Nobel Laureate